

# **Fischer Panda**

## **Partlist**



**Generator type:**  
**Panda 40-4 PSCH**

Super silent technology

120/208 V - 60 Hz / 40kW

**Fischer Panda Defense International**





## Table of contents

<b>00 Generator complete</b>	<b>3</b>
<b>01 Genset and Engine</b>	<b>4</b>
<b>01.1 Genset fixing</b>	<b>5</b>
<b>02 Engine with assembly</b>	<b>6</b>
<b>02.1 Fuel solenoid valve</b>	<b>7</b>
<b>02.2 Fuel solenoid valve</b>	<b>8</b>
<b>02.3 Engine sensors</b>	<b>9</b>
<b>03 Generator housing</b>	<b>10, 11</b>
<b>04 Air suction housing</b>	<b>12, 13</b>
<b>05 Silencer</b>	<b>14</b>
<b>06 Sound cover</b>	<b>15, 16, 17</b>
<b>07 Water-cooled exhaust manifold</b>	<b>18</b>
<b>08 Cable harness complete</b>	<b>19, 20</b>
<b>09 Radiator</b>	<b>21, 22</b>
<b>10 Electrical cabinet</b>	<b>23</b>
<b>10.1 Electrical cabinet inside</b>	<b>24</b>
<b>10.2 Operation unit and output</b>	<b>25, 26</b>
<b>10.3 Load and voltage sensing board</b>	<b>27, 28</b>
<b>10.4 Capacitors terminal block</b>	<b>29</b>
<b>10.5 Terminal block ECU</b>	<b>30</b>
<b>11 Covers</b>	<b>31, 32</b>
<b>12 Oil filter</b>	<b>33</b>
<b>13 Cooling water flow scheme</b>	<b>34</b>
<b>14 Fuel flow scheme</b>	<b>35</b>



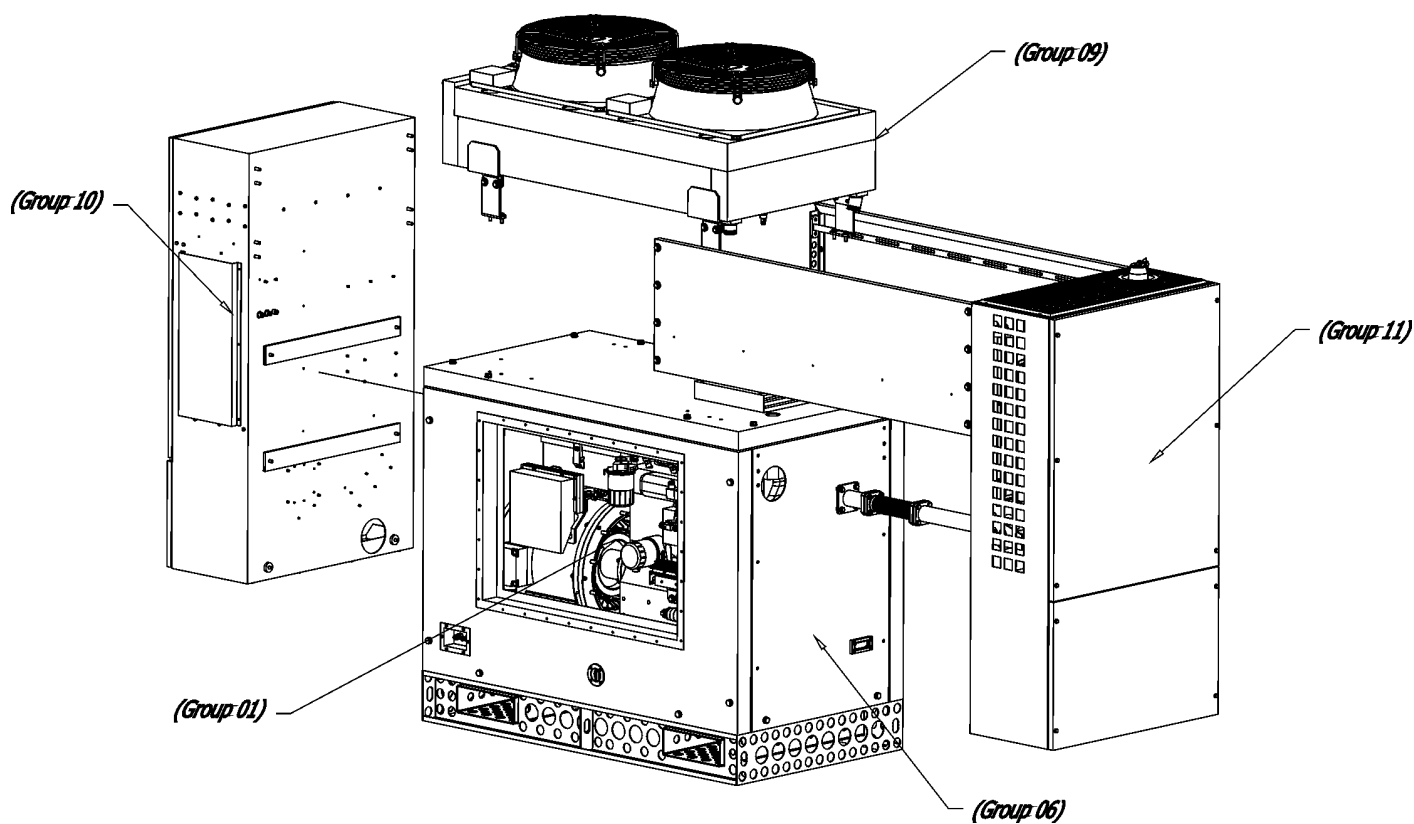
# ***Fischer Panda Generator***

---



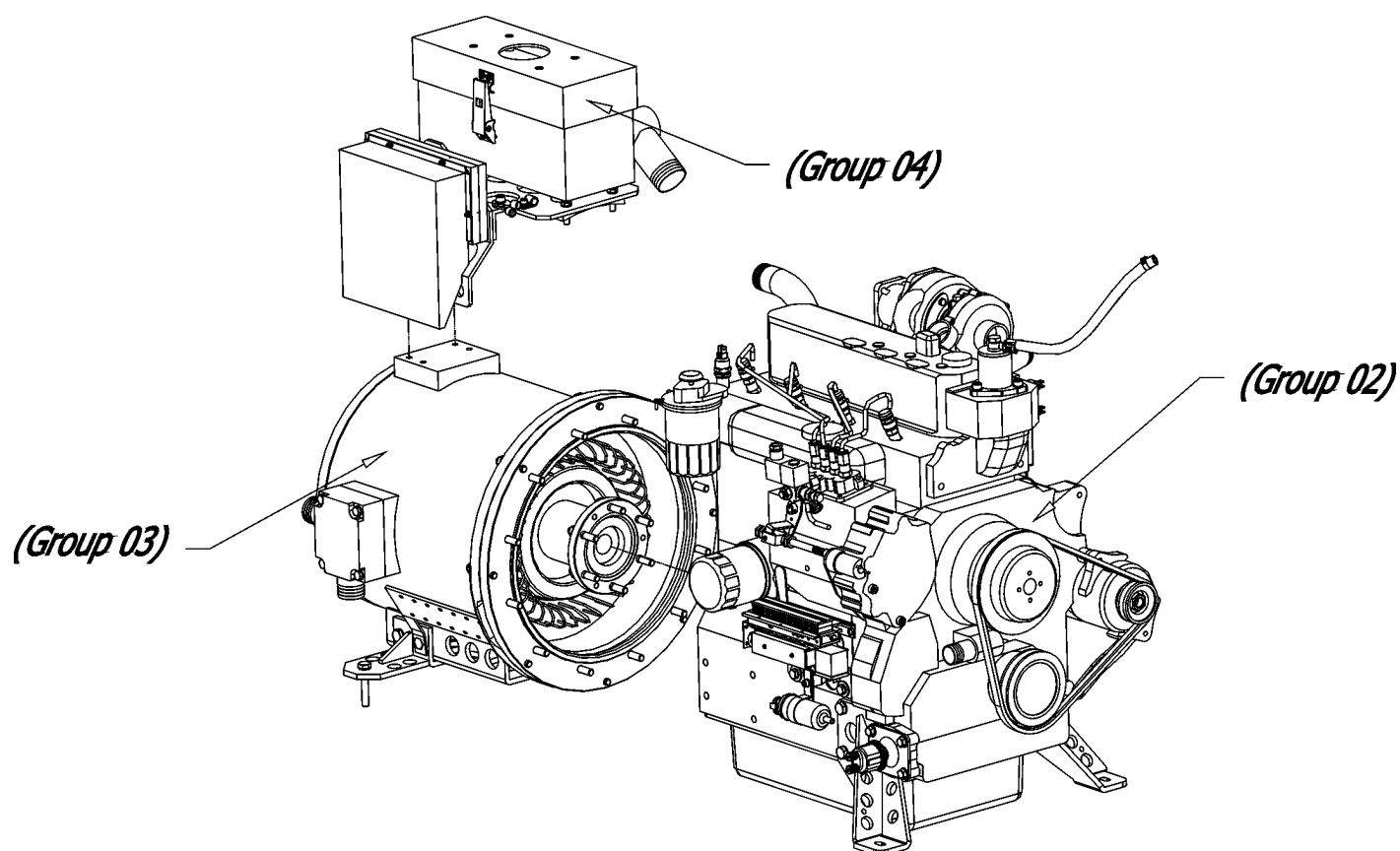
Group: 00 Generator complete

Type: Panda 40-4 PSCH



Group: 01 Genset and Engine

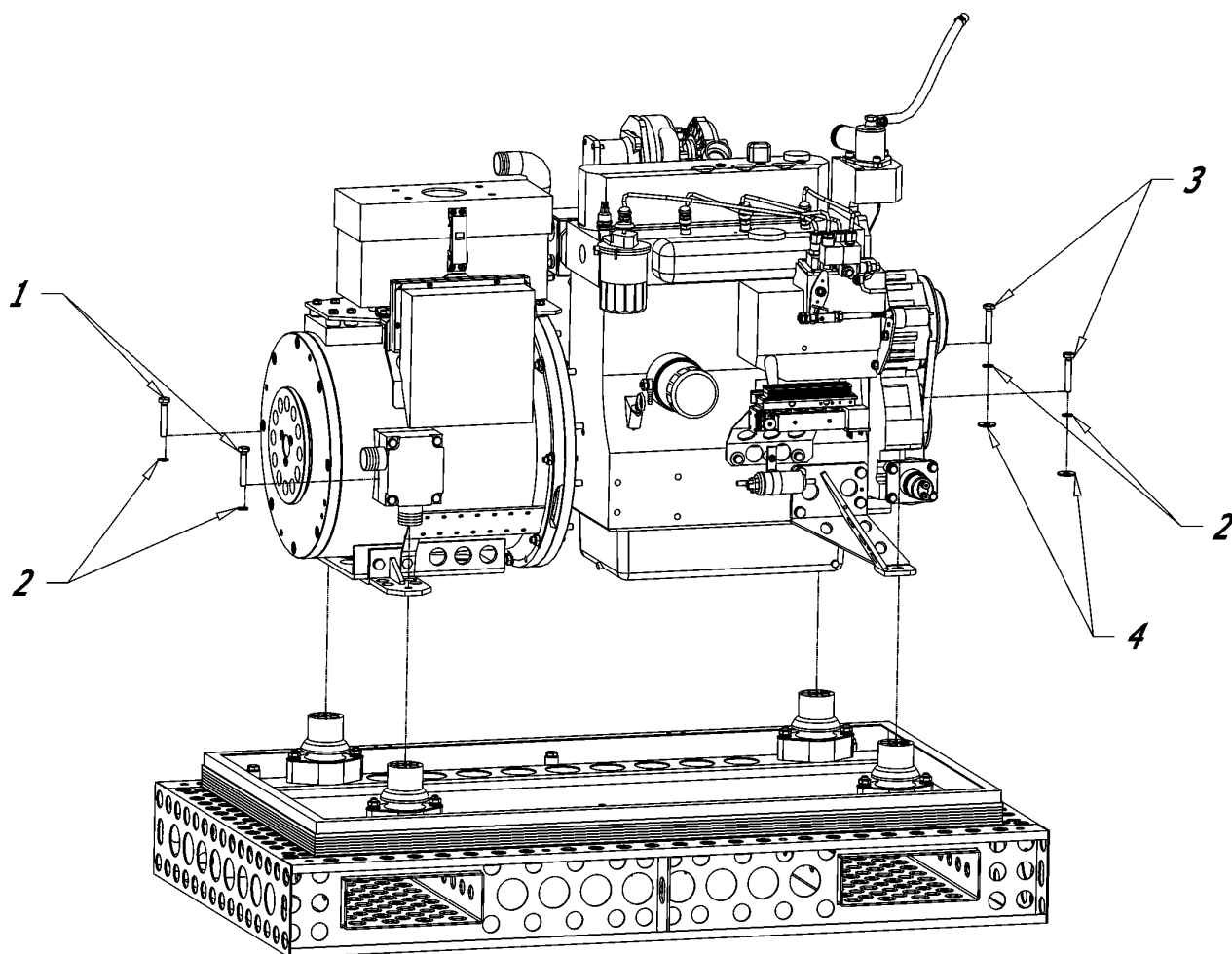
Type: Panda 40-4 PSCH



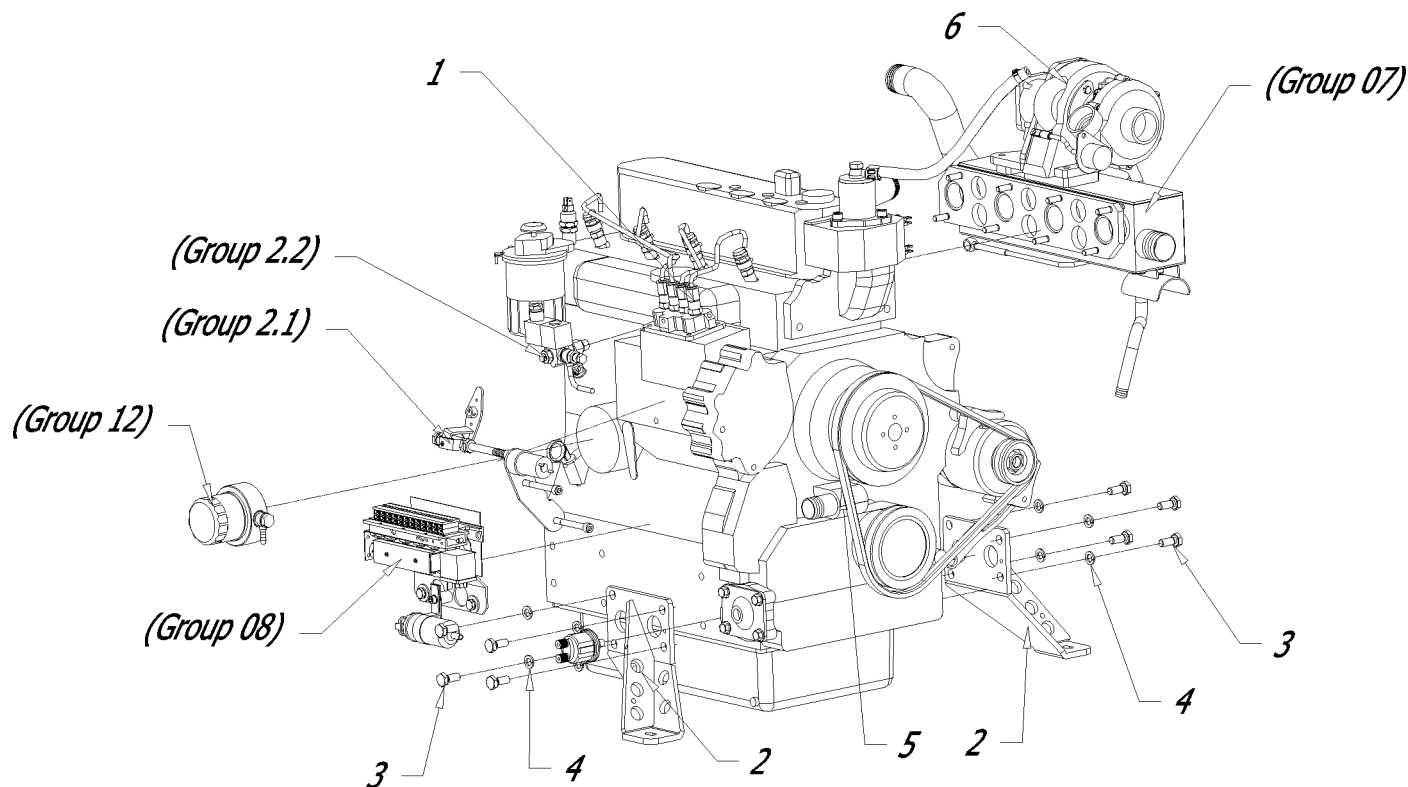
W:\ETL\Panda PSCH 40-4\ETL.m 25.6.03

Group: 01.1 Genset fixing

Type: Panda 40-4 PSCH



Pos	Part Name	Bezeichnung	Spezifikation	Q'ty	Part number
1	Hexagon head screw	Sechskantschraube	M10x65 DIN 933 A2	2	G3A20093310065
2	Spring lock washer	Federring	D10 DIN 127 A2	4	G3A20012710
3	Hexagon head screw	Sechskantschraube	M10x70 DIN 933 A2	2	G3A20093310070
4	Plain washer	Unterlegscheibe	D10 DIN 9021 A2	2	G3A20902110

**Group: 02 Engine with assembly**
**Type: Panda 40-4 PSCH**


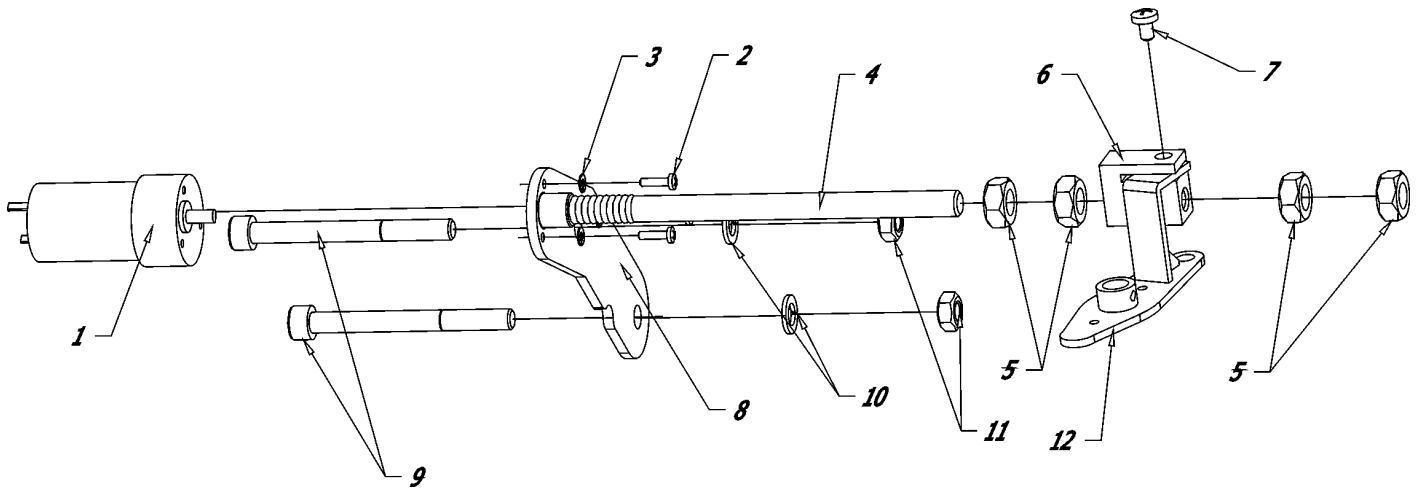
Pos	Part Name	Bezeichnung	Spezifikation	Q'ty	Part number
1	Diesel engine	Antriebsmotor	Kubota V 3300TB	1	K2EMA5102L
2	Chassis engine	Motorfuss	Z-20-23-208	2	G1Z1592E00
3	Hexagon screw	Sechskantschraube	M12x1,25x25 DIN 961	8	G3Vz0096112x1,25x25G
4	Spring lock washer	Federring	D12 DIN 127 A2	8	G3A20012712
5	V-belt	Gates Quad Power II Keilriemen	Roflex, X-TS	1	G228213x970Ld
6	Turbocharger	Turbolader	Kubota	1	K21C04017010

W:\ETL\Panda PSCH 40-4\ETL.fm 25.6.03

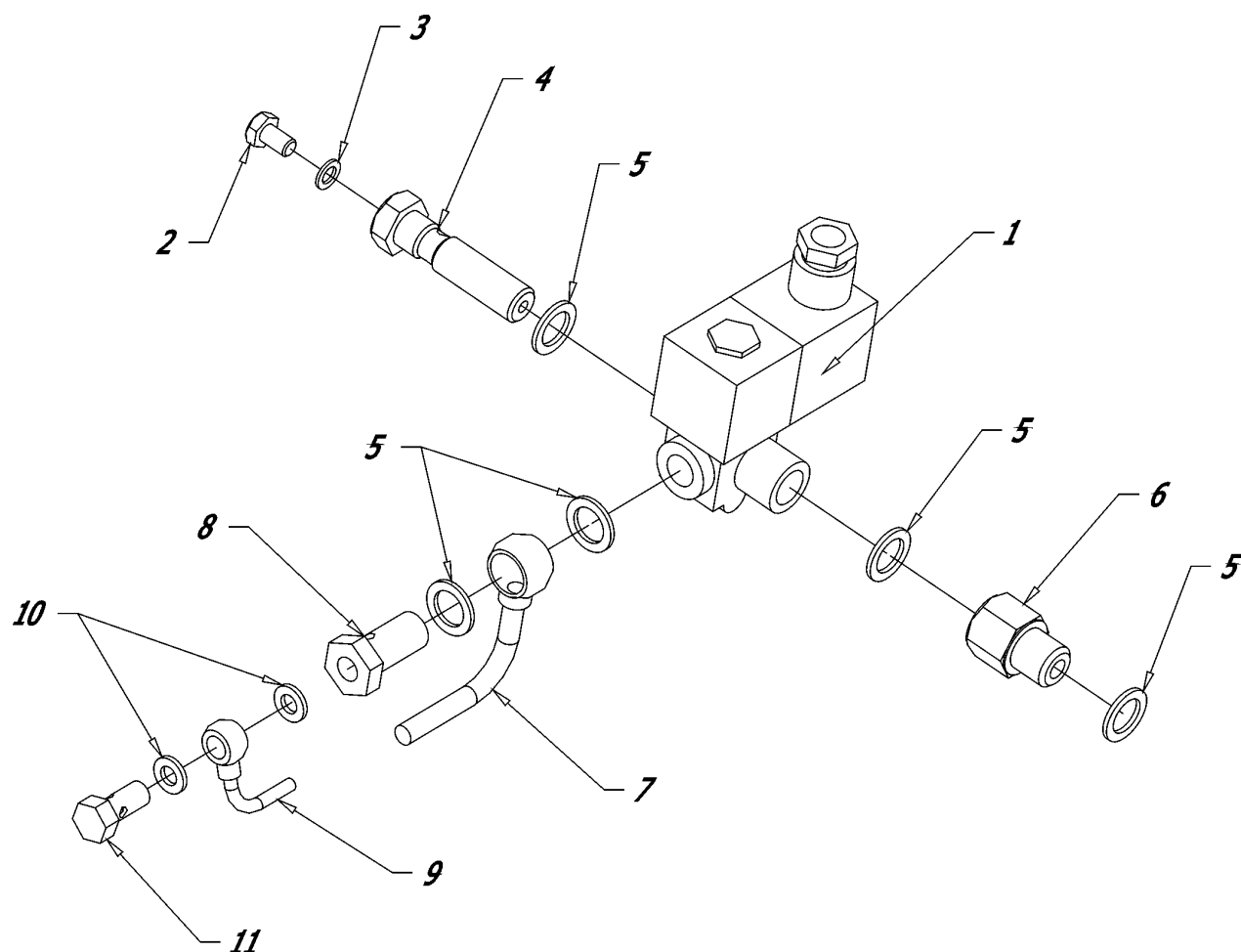


Group: 02.1 Actuator

Type: Panda 40-4 PSCH



Pos	Part Name	Bezeichnung	Spezifikation	Q'ty	Part number
1	Actuator	Stellmotor	DC12V 30,8:1	1	H5BH16104631305
2	Rounded head screw	Linsenkopfschraube	M03x12 DIN 7985 A2	3	G3A20798503012
3	Spring lock washer	Federring	D03 DIN 127 A2	3	G3A20012703
4	Trapezoidal elevating spindle	Trapezgewindespindel	Z-01-12-000 Tr=10, L2=180	1	G1Z1328E00
5	Counter-nut	Kontermutter	Z-01-11-002	4	G1Z1042E00
6	Adjusting nut	Stellmutter	Z-01-10-000	1	G1Z1043E00
7	Trunnion screw	Zapfenschraube	M05x006 DIN 927, verz.	1	G3Vz0092705006G
8	Bracket for actuator	Halterung Stellmotor	Z-20-04-010	1	G1Z1539E00
9	Hexagon socket head screw	Innensechskantschraube	M08x80 DIN 912 A2	2	G3A20091208080
10	Spring lock washer	Federring	D08 DIN 127 A2	2	G3A20012708
11	Hexagon nut	Sechskantmutter	M08 DIN 934 A2	2	G3A20093408
12	Bracket	Halterung	Z-20-23-388	1	G1Z1540E00

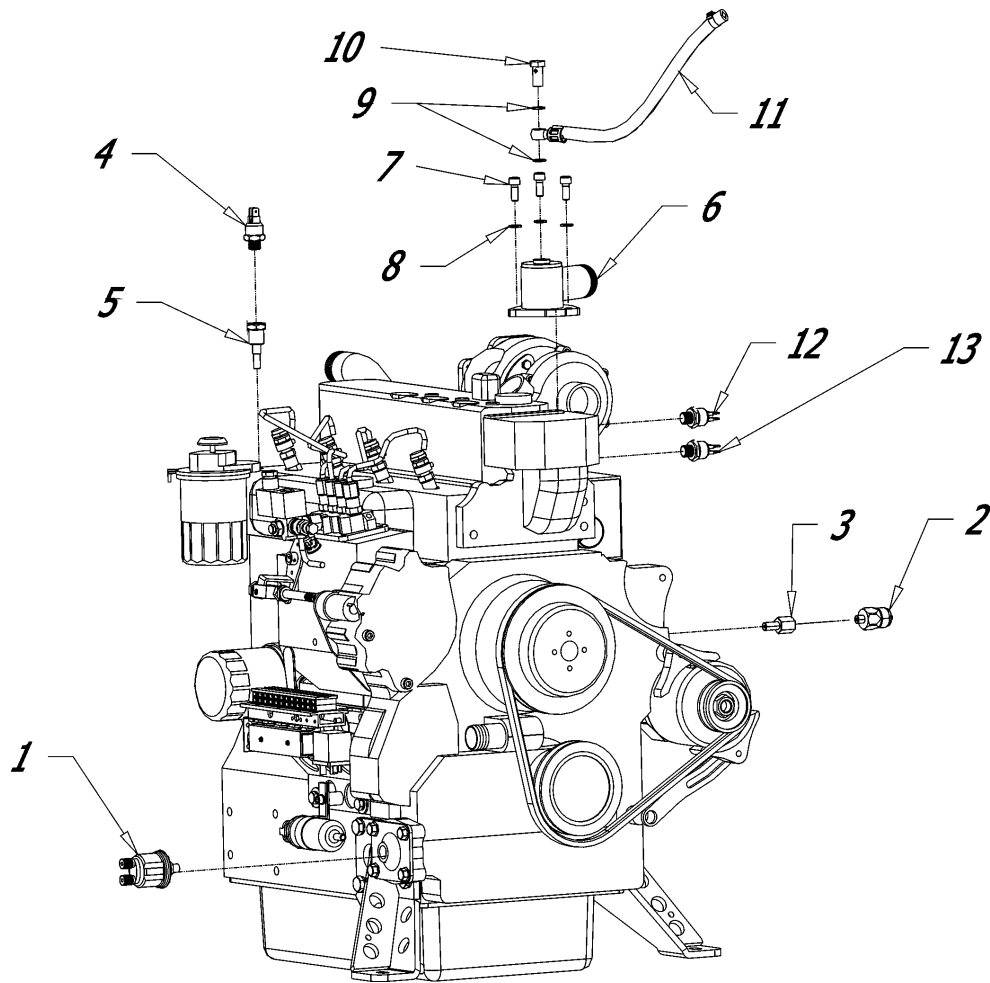
**Group: 02.2 Fuel solenoid valve**
**Type: Panda 40-4 PSCH**


Pos	Part Name	Bezeichnung	Spezifikation	Q'ty	Part number
1	Fuel solenoid valve	Kraftstoffmagnetventil	2489 B 004 12V DC	1	G2GS2489B004a
2	Hexagon head screw	Entlüftungsschraube	M06x10	1	G1SW0157
3	Medium washer Cu	Unterlegscheibe Cu	06x10x1,0 DIN 7603 Cu	1	G3Cu07603061010
4	Hexagon screw	Hohlschraube	M10x1,25	1	G2GS2489B004b
5	Medium washer Cu	Unterlegscheibe Cu	12x18x1,5 DIN 7603 Cu	5	G3Cu07603121815
6	Distance piece	Distanzstück	Z-20-04-021	1	G1Z1541E00
7	Fuel pipe	Kraftstoffleitung	R8 L=575, R02 90°	1	G7TGNW08-575
8	Hexagon screw	Sechskantschraube	HS6 SW17 DIN 7643 AG M12x1,5 IG M8x1	1	G1030HS6M8
9	Fuel pipe	Kraftstoffleitung	R5 L=290, R02 90°	1	G7TGNW05-290
10	Medium washer Cu	Unterlegscheibe Cu	06x10x1,0 DIN 7603 Cu	2	G3Cu07603061010
11	Hexagon screw	Hohlschraube	HS2	1	G2SC205002

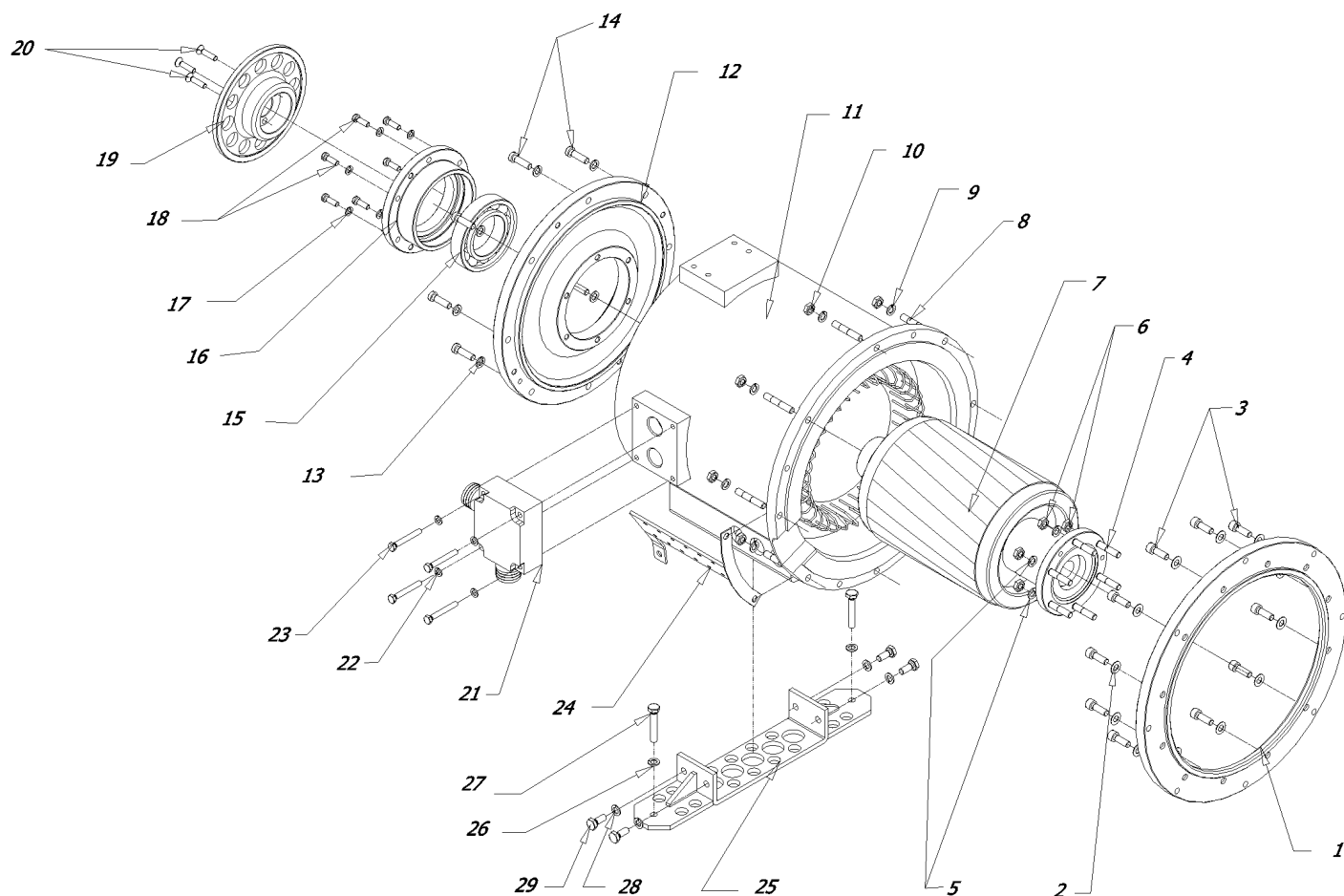
W:\ETL\Panda PSCH 40-4\ETL.m 25.6.03

Group: 02.3 Engine sensors

Type: Panda 40-4 PSCH



Pos	Part Name	Bezeichnung	Spezifikation	Q'ty	Part number
1	Oil pressure sensor	Manometer-Geber, el. 2-polig 5B	VDO 0-5 Bar 6-24V M10x1	1	G2DG360081032002C
2	Oil pressure sensor	Öldruckschalter	NTP 1/8", Schließer	1	G2SF0166401041004
3	Reduction	Adapter für Öldruckschalter	R-00-00-709	1	G1Z1092E00
4	Temperature sensor	Temperaturschalter	THO 105-090°C	1	G2100THO105-2
5	Reduction	Adapter für Temperaturschalter	Z-12-01-062	1	G1Z1473E00
6	Thermostat cover	Thermostatgehäuse Deckel	Z-20-23-222	1	G1Z1593E00
7	Hexagon socket head screw	Innensechskantschraube	M08x25 DIN 912 A2	3	G3A20091208025
8	Spring lock washer	Federring	D08 DIN 127 A2	3	G3A20012708
9	Medium washer Cu	Dichtung Cu	14x22x1,5 DIN 7603 Cu	2	G3Cu07603142215
10	Hexagon screw	Hohlschraube	HS 1/4" DIN7643	1	G2SC205154
11	Oil drain hose	Ölablaßschlauch	D08 Länge 600 mm	1	G105008-600
12	Temperature sensor	Temperaturschalter	THO 120-105°C	1	G2100THO120-2
13	Temperature sensor	Temperaturschalter	THS 098/083°C	1	G2100THS098-2

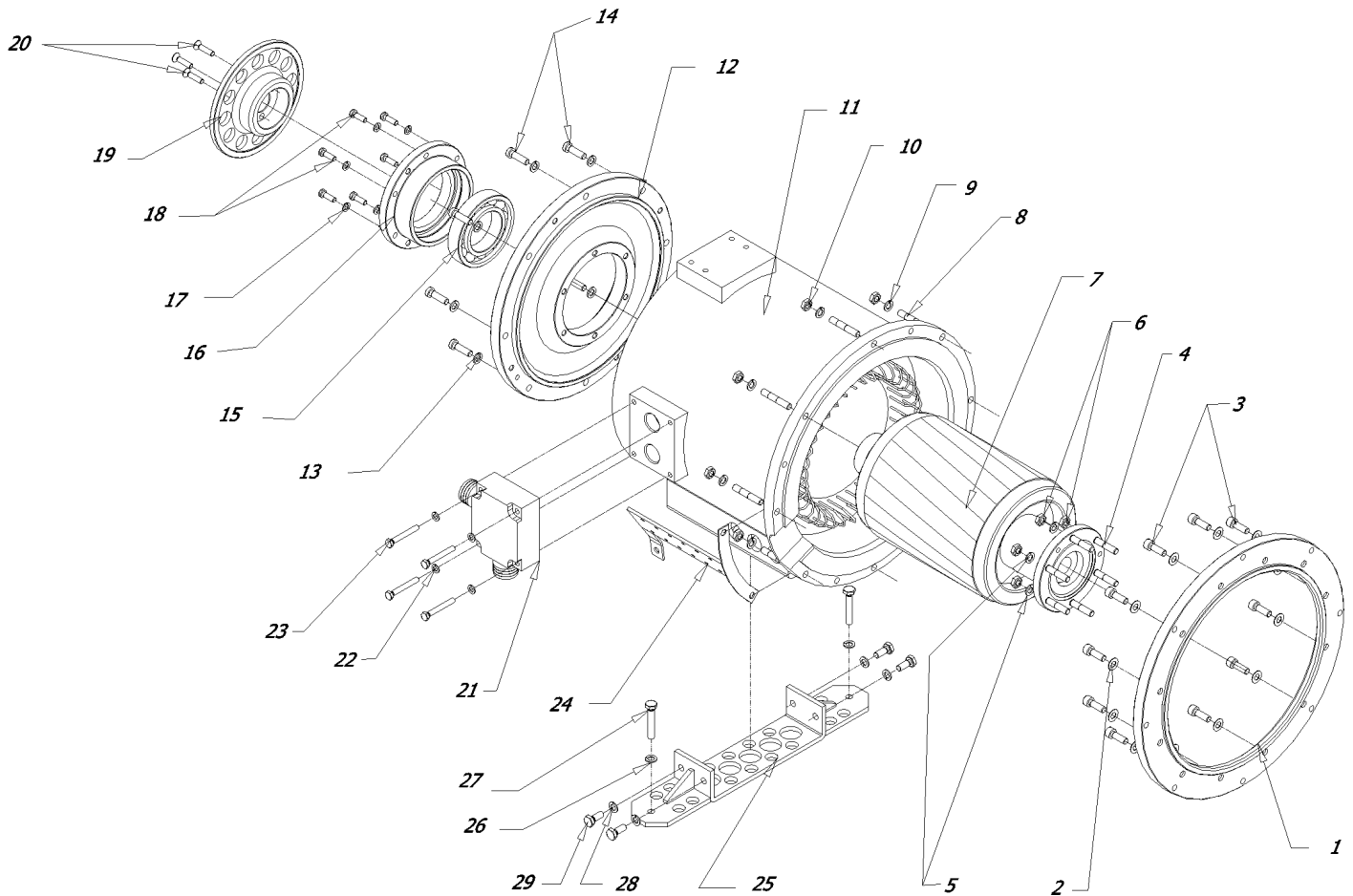
**Group: 03 Generator housing**
**Type: Panda 40-4 PSCH**


W:\ETL\Panda PSCH 40-4\ETL.m 25.6.03

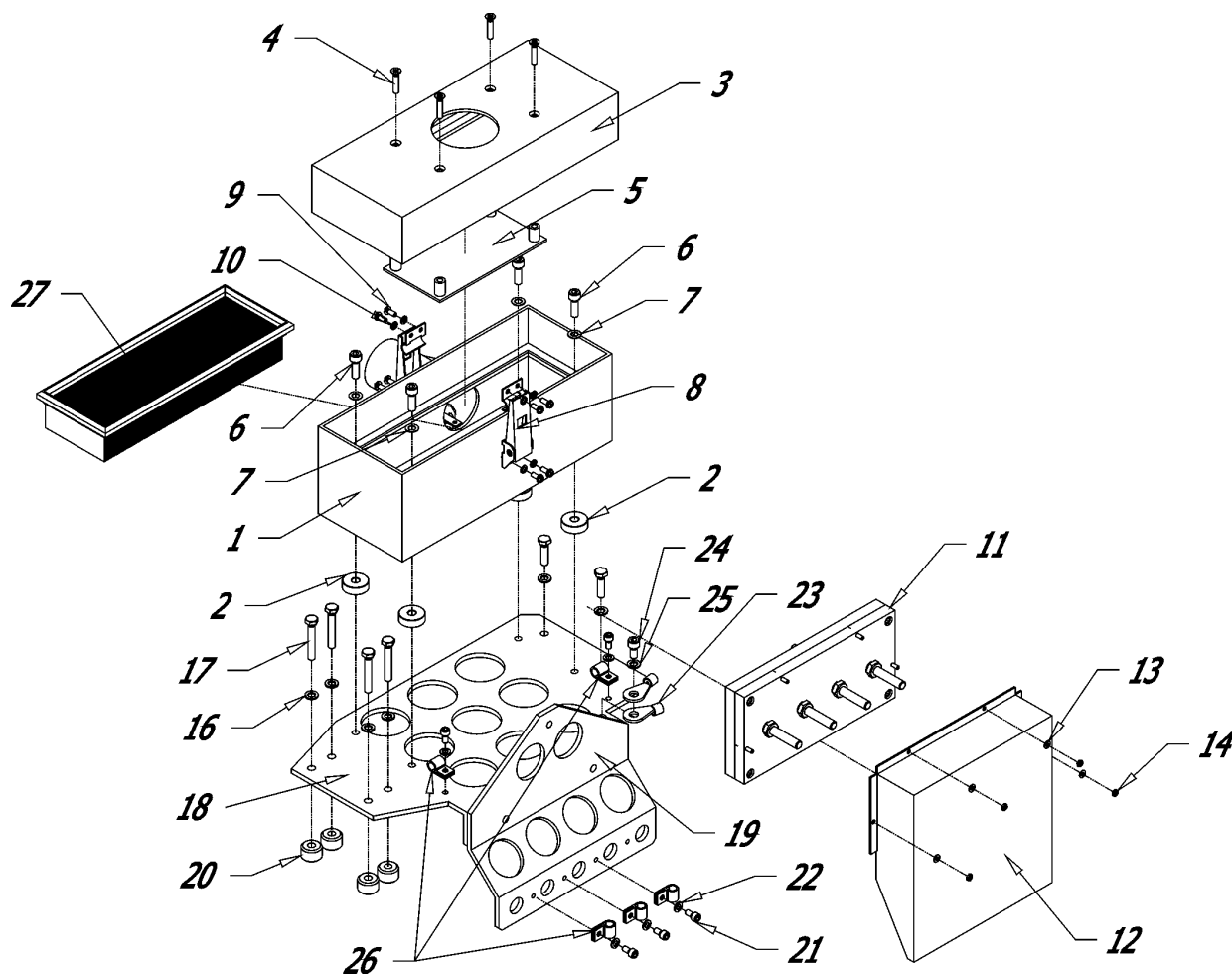
Pos	Part Name	Bezeichnung	Spezifikation	Q'ty	Part number
1	Distance piece	Distanzstück	Z-27-33-474	1	G1Z1530E00
2	Spring lock washer	Federring	D10 DIN 7980 A2	12	G3A20798010
3	Hexagon socket head screw	Innensechskantschraube	M10x30 DIN 912 A2	12	G3A20091210030
4	Stud bolt	Stiftschraube	M10x40 DIN 938 A2	6	G3A250093810x40
5	Spring lock washer	Federring	D10 DIN 127 A2	6	G3A20012710
6	Hexagon head nut	Sechskantmutter	M10 DIN 934A2	6	G3A20093410
7	Shaft generator	Rotor	Z-27-33-475	1	G1Z1531E00
8	Stud bolt	Stiftschraube	M10x40 DIN 938 A2	8	G3A250093810x40
9	Spring lock washer	Federring	D10 DIN 127 A2	8	G3A20012710
10	Hexagon head nut	Sechskantmutter	M10 DIN 934A2	8	G3A20093410
11	Generator housing	Generatorgehäuse mit Wicklung	Z-27-33-472	1	G1Z1532E00-01
12	Front cover	Stirndeckel	02-55-000	1	G1Z1533E00
13	Spring lock washer	Federring	D10 DIN 127 A2	8	G3A20012710
14	Hexagon socket head screw	Innensechskantschraube	M10x35 DIN 7984 A2	8	G3A20798410035
15	Bearing	Rillenkugellager, einreihig	6214-ZZC3P6/L453	1	G25106214C3L453

Group: 03 Generator housing

Type: Panda 40-4 PSCH



Pos	Part Name	Bezeichnung	Spezifikation	Q'ty	Part number
16	Bearnig box	Lagergehäuse	02-83-000	1	G1Z1534E00
17	Spring lock washer	Federring	D08 DIN 127 A2	6	G3A20012708
18	Hexagon socket head screw	Innensechskantschraube	M08x25 DIN 7984 A2	6	G3A200798408025
19	Cooling wheel	Kühlscheibe	Z-20-23-218	1	G1Z1535E00
20	Hexagon socket head screw	Innensechskantschraube	M08x35 DIN 965 A2	3	G3A20096508035
21	Coolant connection block	Wasseranschlussblock	Z-20-23-237	1	G1Z1536E00
22	Spring lock washer	Federring	D08 DIN 127 A2	4	G3A20012708
23	Hexagon head screw	Sechskantschraube	M08x55 DIN 933 A2	4	G3A20093308055
24	Bracket	Halteung	Z-20-23-258	1	G1Z1537E00
25	Generator bracket	Generatorfuß	Z-20-23-220	1	G1Z1538E00
26	Spring lock washer	Federring	D10 DIN 127 A2	4	G3A20012710
27	Hexagon head screw	Sechskantschraube	M10x60 DIN 933 A2	4	G3A20093310060
28	Spring lock washer	Federring	D10 DIN 127 A2	4	G3A20012710
29	Hexagon head screw	Sechskantschraube	M10x25 DIN 933 A2	4	G3A20093310025

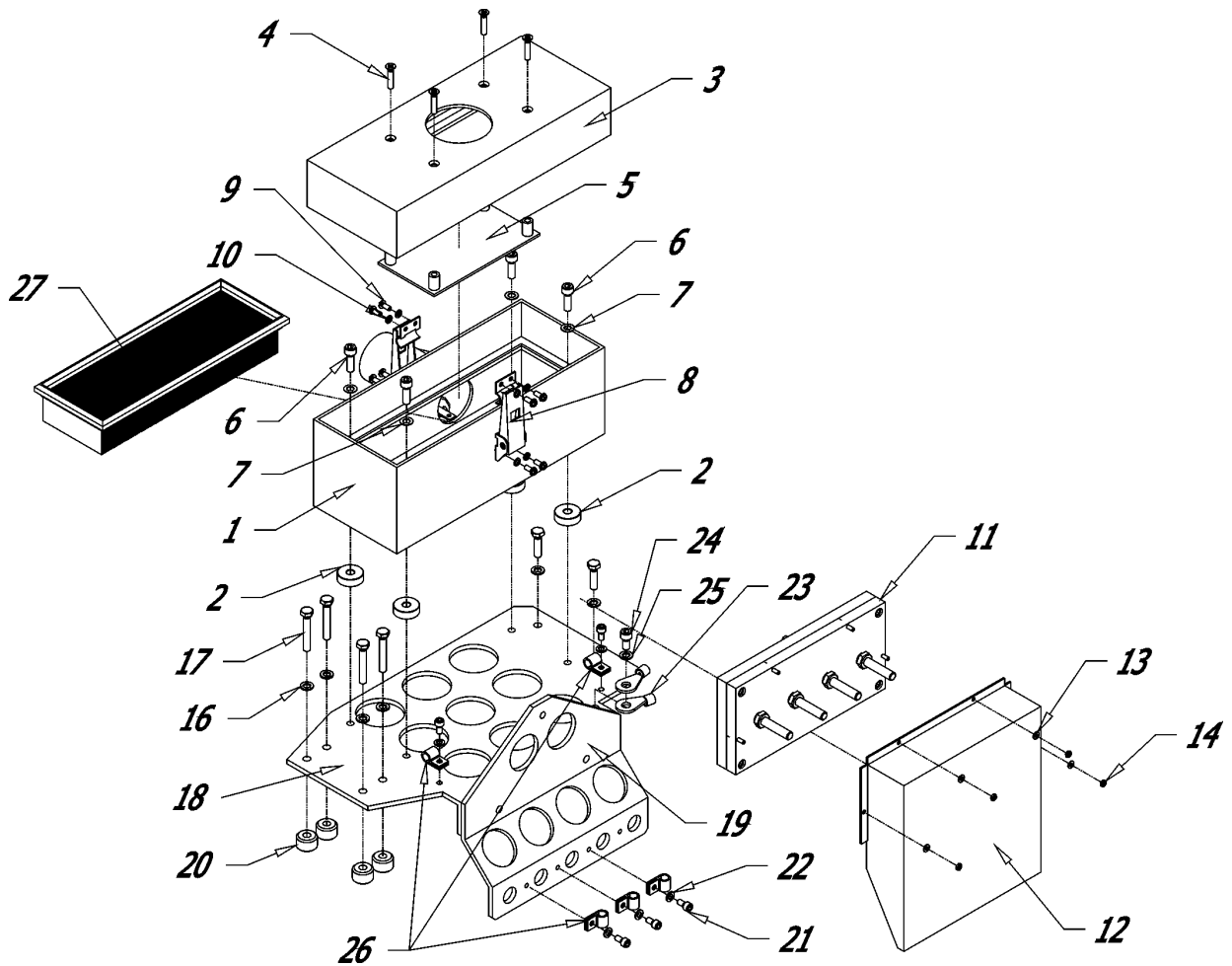
**Group: 04 Air suction housing**
**Type: Panda 40-4 PSCH**


Pos	Part Name	Bezeichnung	Spezifikation	Q'ty	Part number
1	Air suction housing	Luftansauggehäuse	Z-20-23-263	1	G1Z1543E00-01
2	Distance piece	Distanzstück	Z-20-23-263	4	G1Z1543E00-03
3	Cover air suction housing	Deckel Luftansauggehäuse	Z-20-23-263	1	G1Z1543E00-02
4	Countersunk screw	Innensechskantschrauben	M06x30 DIN 965 A2	4	G3A20096506030
5	Plate with distance	Distanzplatte	Z-20-23-263	1	G1Z1543E00-03
6	Hexagon socket head screw	Innensechskantschraube	M08x25 DIN 912 A2	4	G3A20091208025
7	Spring lock washer	Federring	D08 DIN 7980 A2	4	G3A20798008
8	Clipper	Kapselverschluß mit Sicherung Edeltahl rostfrei passiviert	TLS51.5BP	2	J3CAV951L041x5BP
9	Lens cross recess screw	Linsenkopfschraube	M04x12 DIN 7985 A2	8	G3A20798504012
10	Spring lock washer	Federring	D04 DIN 127 A2	8	G3A20012704
11	Plate	Platte	Z-07-65-000	1	G1Z1545E00
12	Cable shield	Kabelschutz	Z-20-23-264	1	G1Z1544E00
13	Medium washer	Unterlegscheibe	D04 DIN 125 A2	4	G3A20012504
14	Hexagon head nut	Sechskantmutter	M04 DIN 934A2	4	G3A20093404
15	Hexagon head screw	Sechskantschraube	M08x30 DIN 933 A2	2	G3A20093308030

W:\ETL\Panda PSCH 40-4\ETL.fm 25.6.03

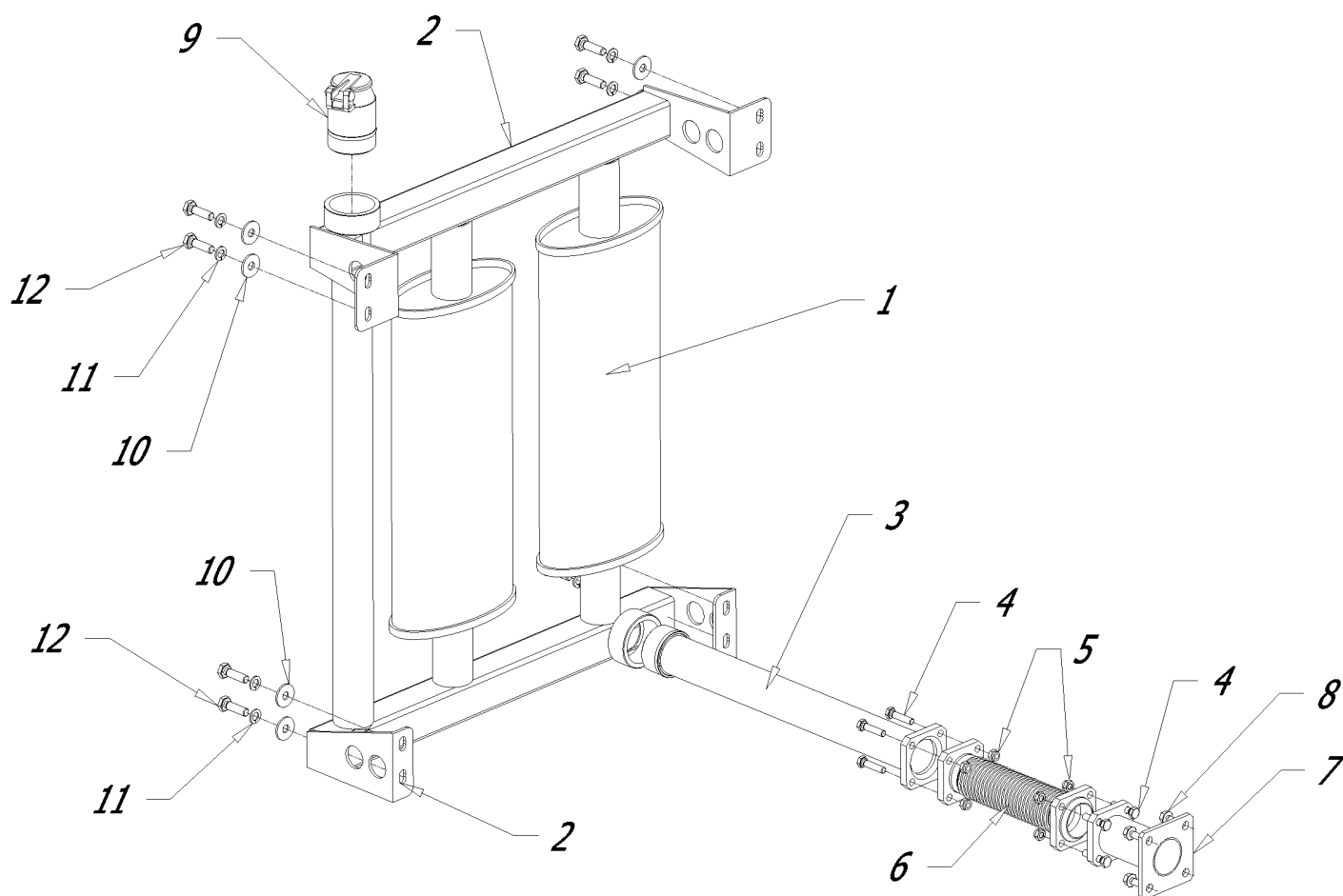
Group: 04 Air suction housing

Type: Panda 40-4 PSCH



W:\ETL\Panda PSCH 40-4\ETL\m 25.6.03

Pos	Part Name	Bezeichnung	Spezifikation	Q'ty	Part number
16	Spring lock washer	Federring	D08 DIN 127 A2	6	G3A20012708
17	Hexagon head screw	Sechskantschraube	M08x45 DIN 933 A2	4	G3A20093308045
18	Bracket air suction housing	Luftansauggehäusehalterung	Z-20-23-219	1	G1Z1542E00-01
19	Bracket air suction housing	Luftansauggehäusehalterung	Z-20-23-219	1	G1Z1542E00-02
20	Distance piece	Distanzstück	Z-20-23-219	4	G1Z1542E00-03
21	Hexagon socket head screw	Innensechskantschraube	M06x12 DIN 912 A2	5	G3A20091206012
22	Spring lock washer	Federring	D06 DIN 127 A2	5	G3A20012706
23	Cable lug	Kabelschuh	E-Cu Vs 035 mm <sup>2</sup>	2	H2RK10035
24	Hexagon socket head screw	Innensechskantschraube	M08x16 DIN 912 A2	1	G3A20091208016
25	Spring lock washer	Federring	D08 DIN 127 A2	1	G3A20012708
26	Pipe clip RSGU16	Rohrschelle RSGU16	RSGU16	5	F7500-1615
27	Air filter	Luftfilter	MANN C34103	1	G2160C34103

**Group: 05 Silencer**
**Type: Panda 40-4 PSCH**


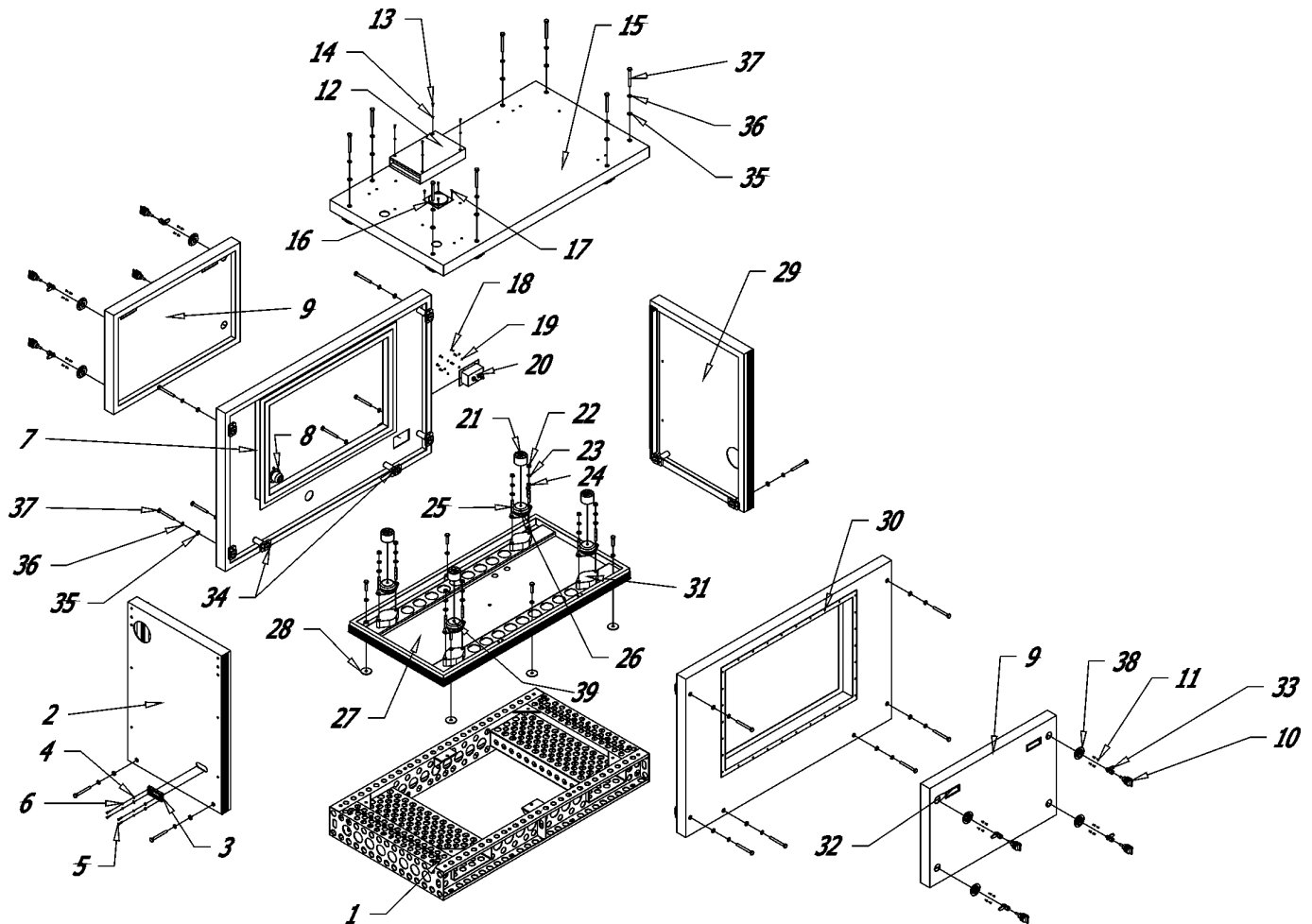
Pos	Part Name	Bezeichnung	Spezifikation	Q'ty	Part number
1	Pre-silencer	Vorschalldämpfer	Z-20-23-409	2	G1Z1546E00-01
2	Bracket	Halterung Vorschalldämpfer	Z-20-23-409	1	G1Z1546E00
3	Exhaust pipe	Abgasrohr	Z-20-23-211	1	G1Z1547E00-03
4	Hexagon head screw	Sechskantschraube	M08x35 DIN 933 A2	8	G3A20093308035
5	Hexagon protective nut	Sechskantmutter, selbstsichernd verkupfert	M08/12 DIN 14441	8	G3Vk14441M08
6	Compensator	Kompensator	Z-20-23-211	1	G1Z1547E00-01
7	Exhaust pipe	Abgasrohr	Z-20-23-211	1	G1Z1547E00-02
8	Hexagon head screw	Sechskantschraube	M08x20 DIN 6921 A2	4	G3A20692108020
9	Capsule pass-through exhaust	Kapseldurchführung Abgas	Z-20-23-357	1	G1Z1580E00
10	Plain washer	Unterlegscheibe	D10 DIN 9021 A2	8	G3A20902110
11	Spring lock washer	Federring	D10 DIN 127 A2	8	G3A20012710
12	Hexagon head screw	Sechskantschraube	M10x35 DIN 933 A2	8	G3A20093310035

W:\ETL\Panda PSCH 40-4\ETL.fm 25.6.03

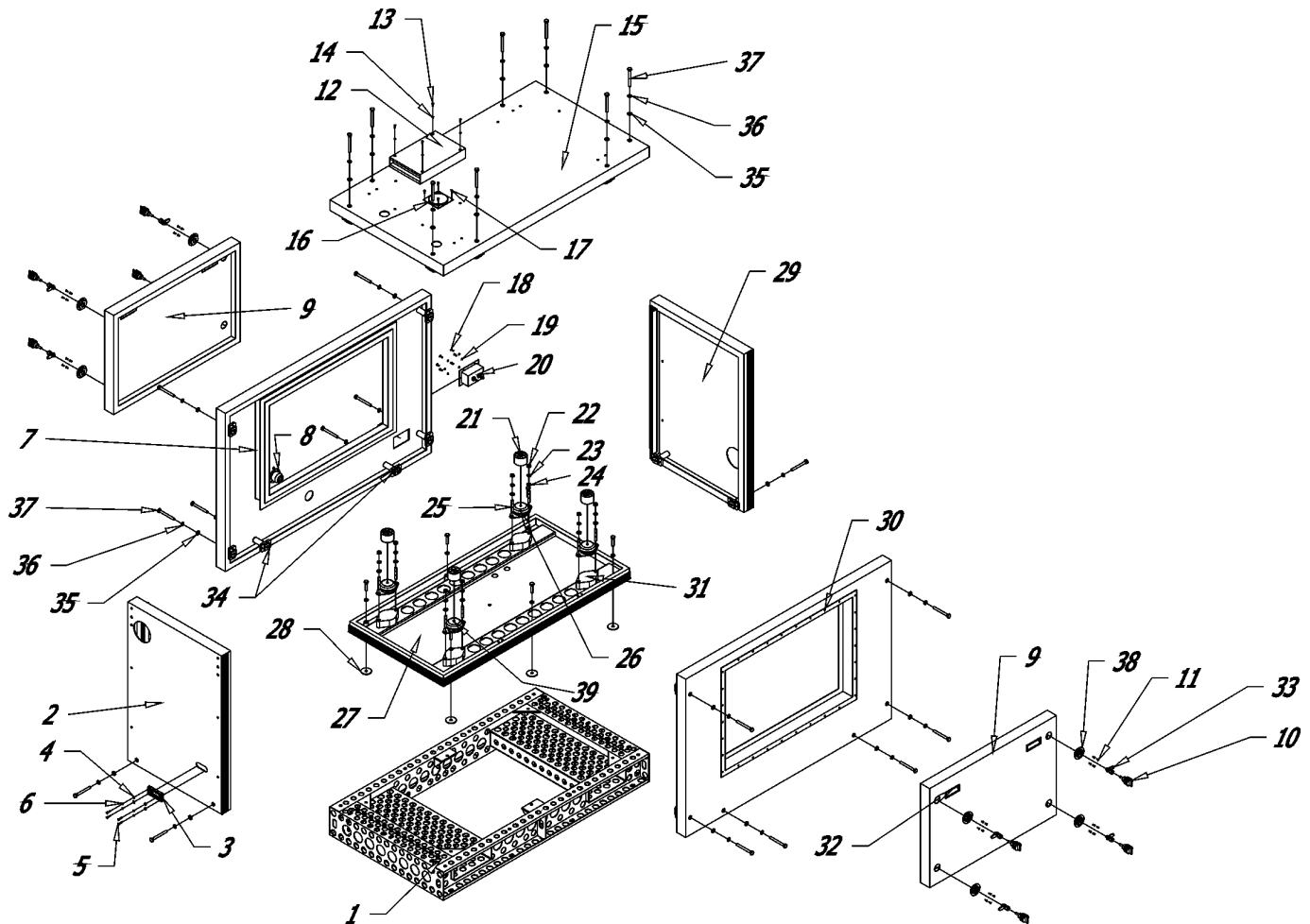


Group: 06 Sound cover

Type: Panda 40-4 PSCH



Pos	Part Name	Bezeichnung	Spezifikation	Q'ty	Part number
1	Frame	Rahmen	Z-20-23-207	1	G1Z1567E00
2	Sound cover back part	Schalldämmgehäuse Stirndeckel Generatorseite	Z-03-50-0999	1	G1Z1566E00-03
3	Bakelite	Bakelit	Z-20-23-365	1	G1Z1574E00
4	Medium washer	Unterlegscheibe	D04 DIN 9021 A2	4	G3A20902104
5	Hexagon head screw	Sechskantschraube	M04x20 DIN 933 A2	4	G3A20093304020
6	Spring lock washer	Federring	D04 DIN 127 A2	4	G3A20012704
7	Sound cover side	Schalldämmgehäuse Stirndeckel Motorseite	Z-03-50-0999	1	G1Z1566E00-04
8	Capsule pass-through for oil drain hose	Kapseldurchführung für Ölablaßschlauch	Z-03-02-001	1	G1Z1082E00
9	Sound cover door	Schalldämmgehäuse Seitentür	Z-03-50-0999	2	G1Z1566E00-05
10	Closure	Riegelverschluß mit Drehknopf	E3-19-35 Art.Nr. 67455	8	J3ST440V 02
11	Hexagon socket head screw	Innensechskantschrauben	M03x10 DIN 965 A2	64	G3A20096503010
12	Cover air suction inlet	Abdeckung Ansauglufteintritt	Z-20-23-239	1	G1Z1575E00
13	Hexagon head screw	Sechskantschraube	M04x10 DIN 933 A2	4	G3A20093304010
14	Spring lock washer	Federring	D04 DIN 127 A2	4	G3A20012704

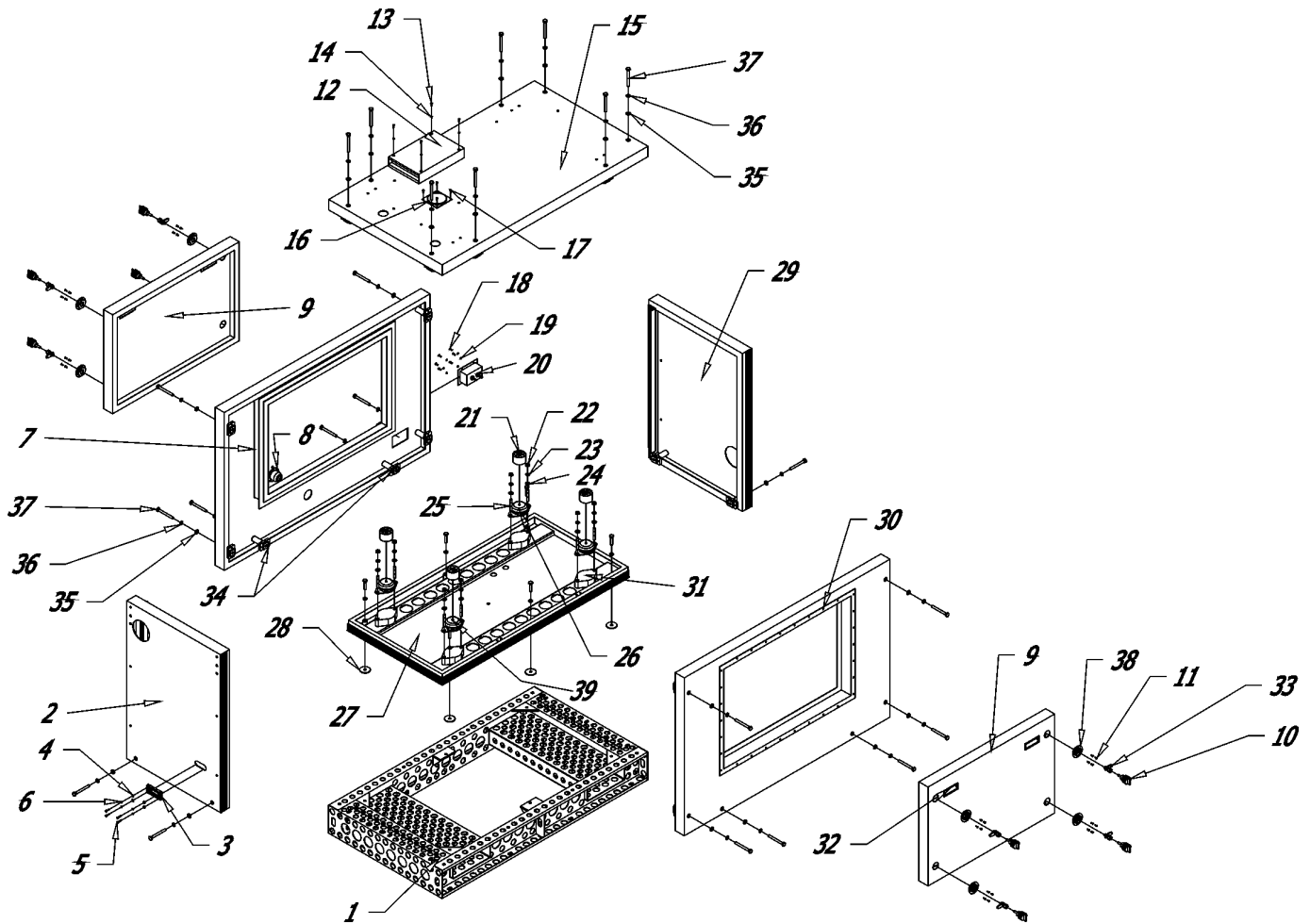
**Group: 06 Sound cover**
**Type: Panda 40-4 PSCH**


W:\ETL\Panda PSCH 40-4\ETL.m 25.6.03

Pos	Part Name	Bezeichnung	Spezifikation	Q'ty	Part number
15	Sound cover top	Schalldämmgehäuse Deckel	Z-03-50-0999	1	G1Z1566E00-06
16	Capsule pass-through for expansion tank	Kapseldurchführung für Ausdehnungsgefäß	Z-20-23-216	1	G1Z1576E00
17	Rounded head screw	Linienkopfschraube	M04x10 DIN 7985 A2	4	G3A20798504010
18	Hexagon head screw	Sechskantschraube	M04x12 DIN 933 A2	6	G3A20093304012
19	Spring lock washer	Federring	D04 DIN 127 A2	6	G3A20012704
20	Capsule pass-through for fuel in-out	Kapseldurchführung für Kraftstoff	Z-20-23-254	1	G1ZA1577E00
21	Distance piece	Distanzstück	Z-03-50-0999	4	G1Z1566E00-02
22	Hexagon nut	Sechskantmutter	M10 DIN 934 A2	8	G3A20093410
23	Spring lock washer	Federring	D10 DIN 127 A2	8	G3A20012710
24	Medium washer	Unterlegscheibe	D10 DIN 125 A2	8	G3A20012510
25	Stud bolt	Stiftschraube	M10x45 DIN 939 A2	8	G3A20093910045
26	Shock absorber	Schwingungsdämpfer, abreißsicher	RAEM 125B-M10	2	RA125J3100RAEM125B
27	Sound cover base part	Schalldämmgehäuse Stirndeckel Motorseite	Z-03-50-0999	1	G1Z1566E00-01
28	Medium washer	Unterlegscheibe	Z-20-23-382	6	G1Z1578E00

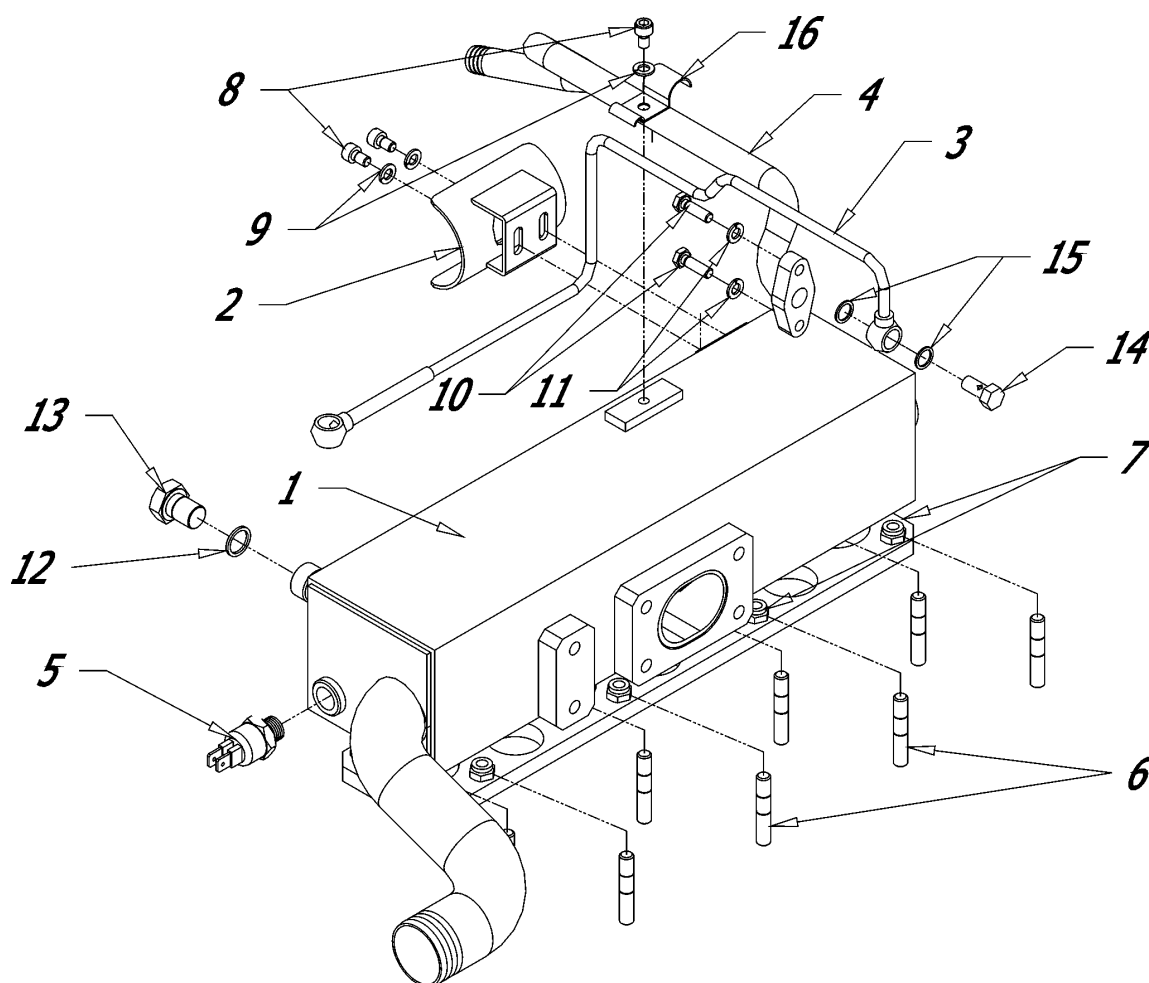
Group: 06 Sound cover

Type: Panda 40-4 PSCH



W:\ETL\Panda PSCH 40-4\ETL\im 25.6.03

Pos	Part Name	Bezeichnung	Spezifikation	Q'ty	Part number
29	Sound cover front part	Schalldämmgehäuse Stirndeckel Motorseite	Z-03-50-0999	1	G1Z1566E00-07
30	Sound cover side	Schalldämmgehäuse Stirndeckel Motorseite	Z-03-50-0999	1	G1Z1566E00-08
31	Distance piece	Distanzstück	Z-20-23-403	4	G1Z1579E00
32	Door pull	Griffmulde aus ABS-Kunststoff, schwarz	P2-42 82,5 x 35,8x17,0 mm	4	J3STP242
33	Closure	Riegelverschluß mit Drehknopf Verlängerung M10	Z-01-00-012	8	G1Z1581E00
34	Bush	Buchse	Z-20-23-235	24	G1Z1590E00
35	Medium washer	Unterlegscheibe	D10 DIN 9021 A2	24	G3A20902110
36	Spring lock washer	Federring	D10 DIN 127 A2	24	G3A20012710
37	Hexagon head screw	Sechskantschraube	M10x95 DIN 933 A2	24	G3A20093310095
38	Grip low-placed body	Einbauadapter für Riegelverschluß	Z-12-01-035	8	G1Z1435E00
39	Shock absorber	Schwingungsdämpfer, abreißsicher	RAEM 350A	2	J3100RAEM350A

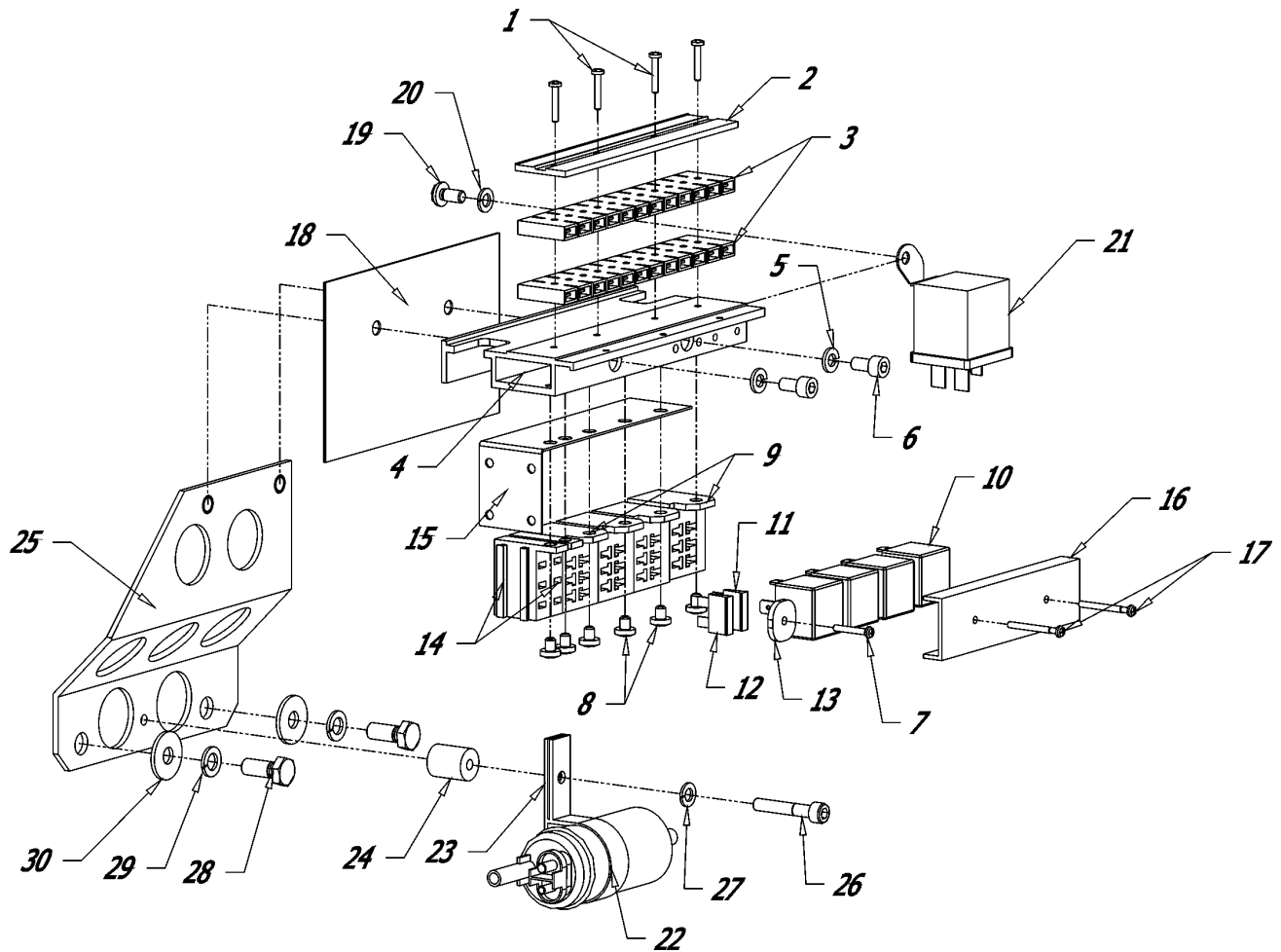
**Group: 07 Water-cooled exhaust manifold**
**Type: Panda 40-4 PSCH**


Pos	Part Name	Bezeichnung	Spezifikation	Q'ty	Part number
1	Exhaust manifold, water-cooled	Abgaskrümmmer, wassergekühlt	Z-20-23-368	1	G1Z1548E00-01
2	Bracket	Halterung	Z-20-23-387	1	G1Z1549E00
3	Oil pipe	Rohr	Z-20-23-260	1	G1Z1550E00
4	Oil pipe	Rohr	Z-20-23-261	1	G1Z1551E00
5	Temperature sensor	Temperaturschalter	THO 120-105°C	1	G2100THO120-2
6	Stud screw	Stiftschraube	M08x30 DIN 835 A2	6	G3A20083508030
7	Hexagon protective nut	Sechskantmutter, selbstsichernd	M08/12 DIN 14441	6	G3Vk14441M08
8	Hexagon socket head screw	Innensechskantschraube	M06x10 DIN 912 A2	3	G3A20091206010
9	Spring lock washer	Federring	D06 DIN 127 A2	3	G3A20012706
10	Hexagon head screw	Sechskantschraube	M06x20 DIN 933 A2	2	G3A20093306020
11	Spring lock washer	Federring	D06 DIN 127 A2	2	G3A20012706
12	Medium washer Cu	Unterlegscheibe Cu	14x18x1,5 DIN 7603 Cu	1	G3Cu076031401815
13	Hole plug Ms	Verschlußstopfen Ms	Ms AG 1 1/4" blank	1	F6AB3032
14	Hexagon screw	Hohlschraube	HS02	1	G2SC205002
15	Medium washer Cu	Unterlegscheibe Cu	06x10x1,0 DIN 7603 Cu	2	G3Cu07603061010

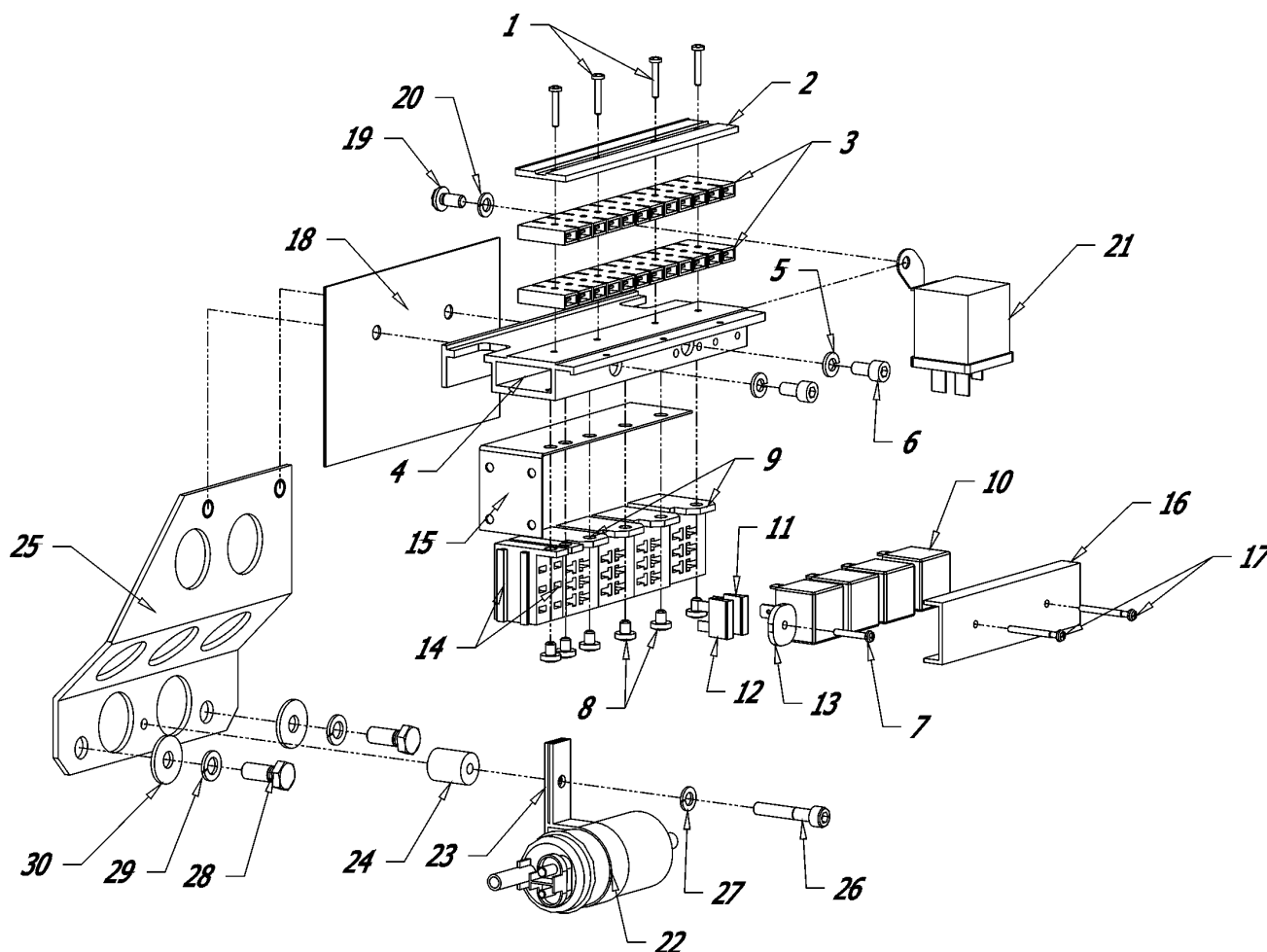
W:\ETL\Panda PSCH 40-4\ETL.m 25.6.03

Group: 08 Cable harness complete

Type: Panda 40-4 PSCH



Pos	Part Name	Bezeichnung	Spezifikation	Q'ty	Part number
1	Rounded head screw	Linsenkopfschraube	M03x20 DIN 7985 A2	4	G3A20798503020
2	Aluminium strip	Aluleiste	07-00-002	1	G1Z1259E00
3	Cable connection strip	Leitungsverbinder	8KV 002 132 001	2	H5HE8KV002132001
4	Cable harness aluminium strip	Kabelbaum Aluprofil	Z-20-23-265	1	G1Z1552E00
5	Spring lock washer	Federring	D06 DIN 127 A2	2	G3A20012706
6	Hexagon socket head screw	Innensechskantschraube	M06x25 DIN 912 A2	2	G3A20091206025
7	Rounded head screw	Linsenkopfschraube	M03x20 DIN 7985 A2	1	G3A20798503020
8	Rounded head screw	Linsenkopfschraube	M05x06 DIN 7985 A2	6	G3A20798505006
9	Socket housing for relays	Steckhülsegehäuse für Relais	8JA 003 526-002 005	4	H5HE8JA003526002
10	Relay	Relais	4 RA 003-510-067	4	H5HE4RA003510067
11	Fuse	Flachsicherung	25A	1	H511025A
12	Fuse	Flachsicherung	15A	1	H511015A
13	Cover plate for fuses	Sicherungsabdeckung	Z-07-01-006	1	G1Z1028E00
14	Socket housing for fuses	Steckhülsegehäuse Sicherungen	8JA007 024-001	2	H5HE8JA007024001
15	Cable sheet	Kabelführungsblech	Z-07-01-005	1	G1Z1029E00

**Group: 08 Cable harness complete**
**Type: Panda 40-4 PSCH**


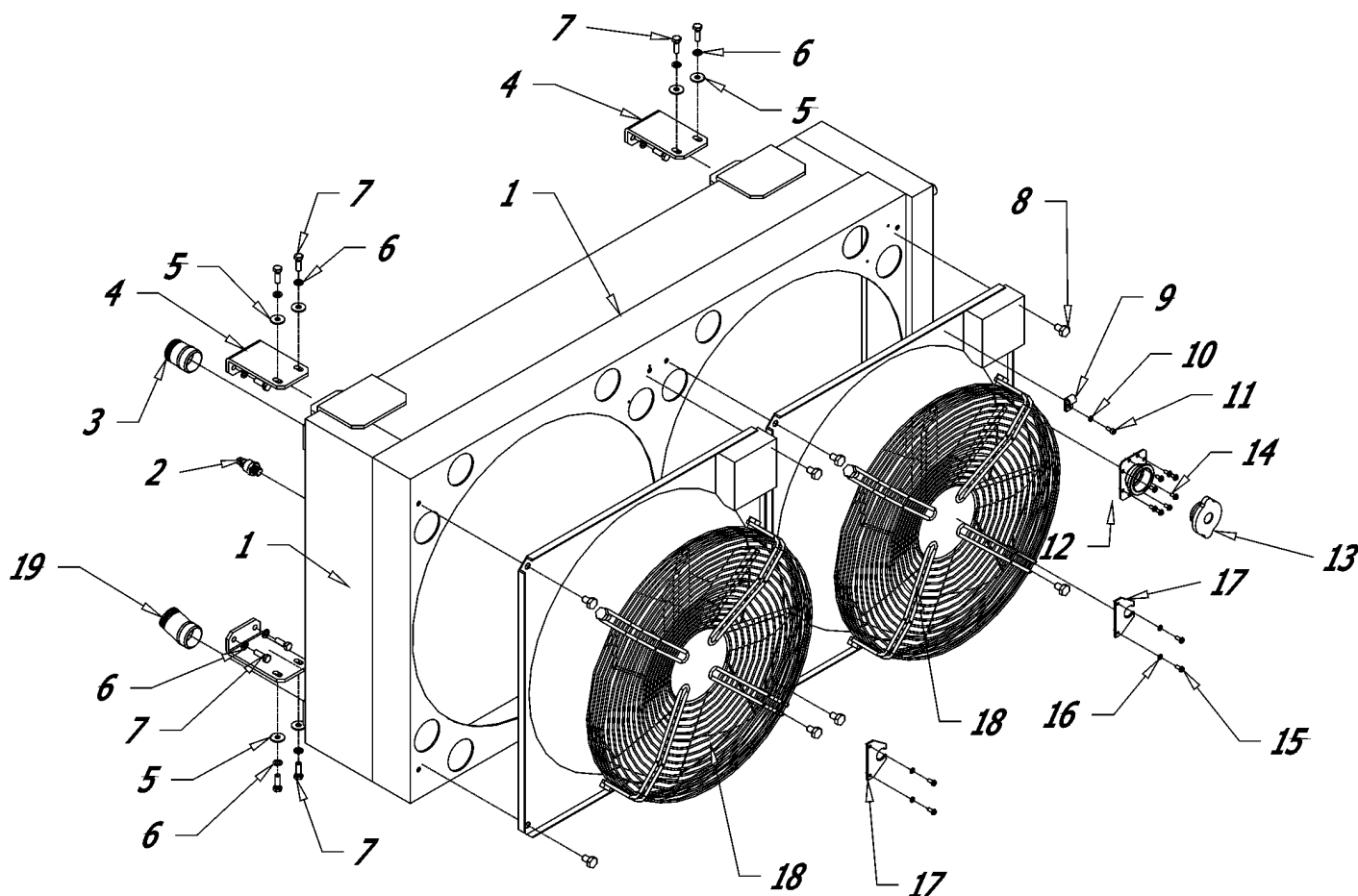
Pos	Part Name	Bezeichnung	Spezifikation	Q'ty	Part number
16	Cover plate for relays	Relaisabdeckung	R-00-00-503	1	G1Z1406E00
17	Rounded head screw	Linsenkopfschraube	M03x30 DIN 7985 A2	2	G3A20798503030
18	Textolit	Isolierplatte	Z-07-66-000	1	G1Z1401E00
19	Cylinder head screw	Zylinderschraube	M06x12 DIN7045 A2	1	G3A20704506012
20	Spring lock washer	Federring	D06 DIN 127 A2	1	G3A20012706
21	Realy	Relais	16259-6025-0	1	K21625960250
22	Fuel pump	Kraftstoffpumpe	Pierburg type 51, 12V 7.214440.51.0	1	G6PI721440510
23	Pipe clip RSGU 37	Rohrschelle RSGU 37	RSGU 1.37/15	1	F7500-3715
24	Distance piece	Distanzstück	Z-20-23-210	1	G1Z1553E00-02
25	Cable harness bracket	Kabelbaumhalterung	Z-20-23-210	1	G1Z1553E00-01
26	Hexagon socket head screw	Innensechschtschraube	M06x35 DIN 912 A2	1	G3A20091206035
27	Spring lock washer	Federring	D06 DIN 127 A2	1	G3A20012706
28	Hexagon head screw	Sechskantschraube	M08x20 DIN 933 A2	2	G3A20093308020
29	Spring lock washer	Federring	D08 DIN 127 A2	2	G3A20012708
30	Plain washer	Unterlegscheibe	D08 DIN 9021 A2	2	G3A20902108

W:\ETL\Panda PSCH 40-4\ETL.fm 25.6.03

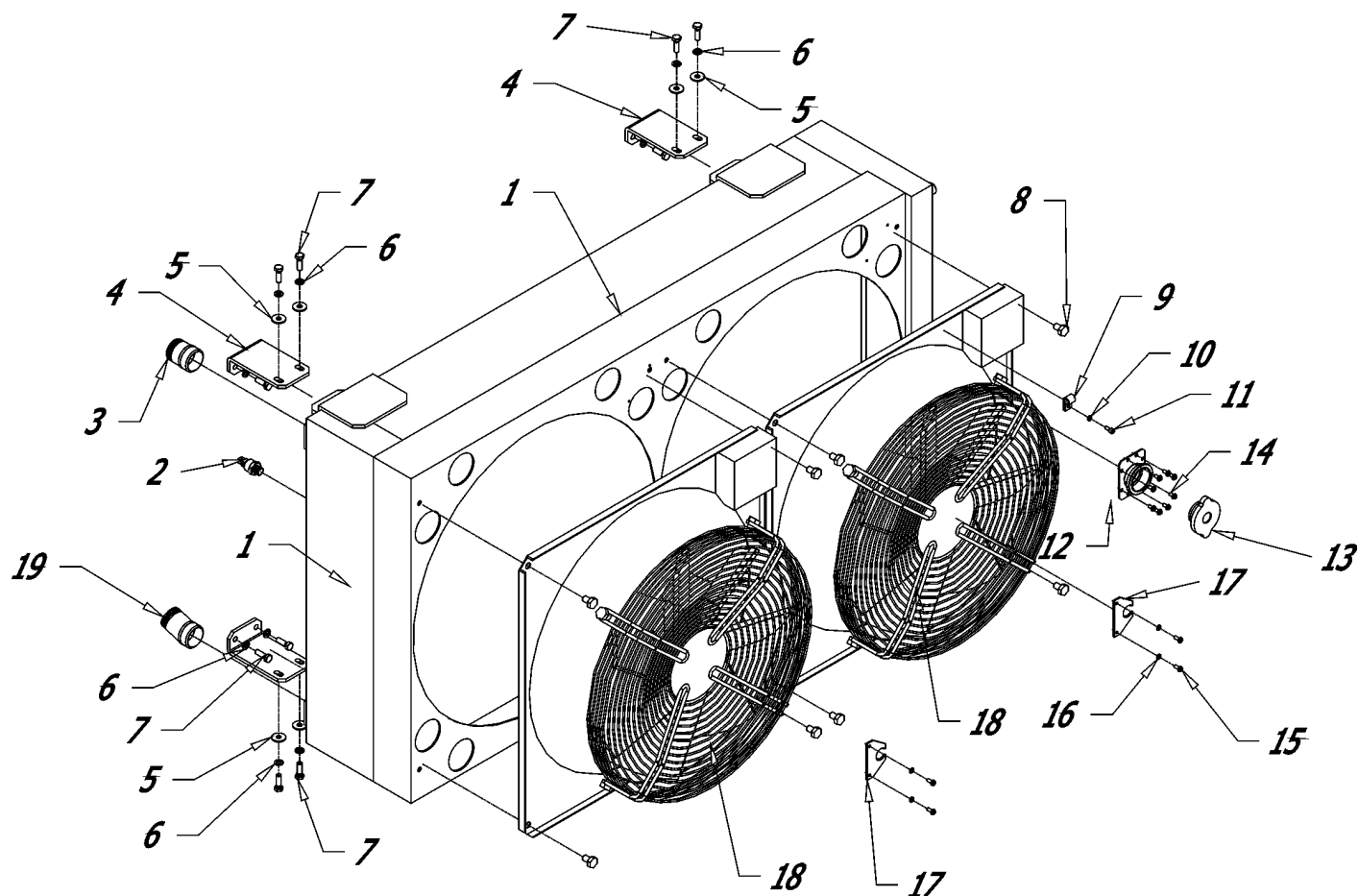


Group: 09 Radiator

Type: Panda 40-4 PSCH



Pos	Part Name	Bezeichnung	Spezifikation	Q'ty	Part number
1	Radiator	Kühler	Z-20-23-374	1	G1Z1554E00
2	Temperature sensor	Temperaturschalter	THS 83-78°C	1	G2100THS083-2
3	Gland with thread	Gewindestutzen	Z-20-23-354	1	G1Z1555E00
4	Radiator bracket	Kühlerhalterung	Z-20-23-225	4	G1Z1556E00
5	Medium washer	Unterlegscheibe	D08 DIN 9021 A2	8	G3A20902108
6	Spring lock washer	Federring	D08 DIN 127 A2	16	G3A20012708
7	Hexagon head screw	Sechskantschraube	M08x25 DIN 933 A2	16	G3A20093308025
8	Hexagon head screw	Sechskantschraube	M08x16 DIN 933 A2	8	G3A20093308016
9	Pipe clip RSGU12	Rohrschelle RSGU12	RSGU12	1	F7500-1215
10	Spring lock washer	Federring	D05 DIN 127 A2	1	G3A20012705
11	Hexagon socket head screw	Innensechskantschraube	M05x12 DIN 912 A2	1	G3A20091205012
12	Cover filling neck	Kühlwassereinfüllstutzen, ohne Überlauf	Z-20-23-240	1	G1Z1557E00
13	Filling neck cap	Kühlwasserverschlußdeckel	KA60-70 kPa	1	F6PAKA60-70o
14	Rounded head screw	Linsenkopfschraube	M05x10 DIN 7985 A2	8	G3A20798505010

**Group: 09 Radiator**
**Type: Panda 40-4 PSCH**


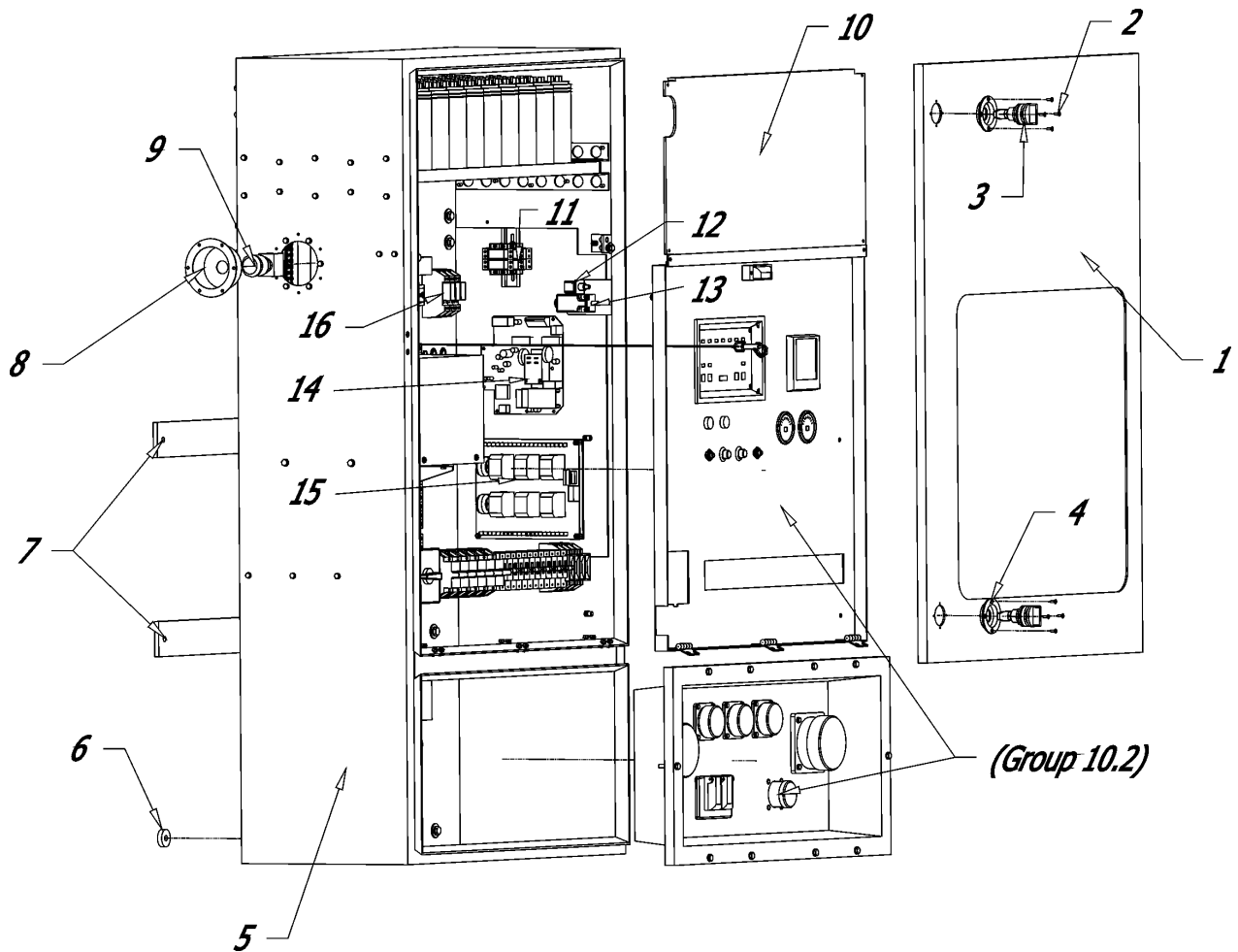
Pos	Part Name	Bezeichnung	Spezifikation	Q'ty	Part number
15	Rounded head screw	Linsenkopfschraube	M04x12 DIN 7985 A2	4	G3A20798504012
16	Spring lock washer	Federring	D04 DIN 127 A2	4	G3A20012704
17	Air fan plate	Axialventilator Blech	Z-12-01-052	2	G1Z1426E00
18	Fan	Axialventilator mit gesichelten Alu-Druckgußflügel	FE050-4EQ.4I.5 115V-60Hz # 126835	2	F6ZG126835
19	Gland with thread	Gewindestutzen	Z-20-23-378	1	G1Z1558E00

W:\ETL\Panda PSCH 40-4\ETL.m 25.6.03

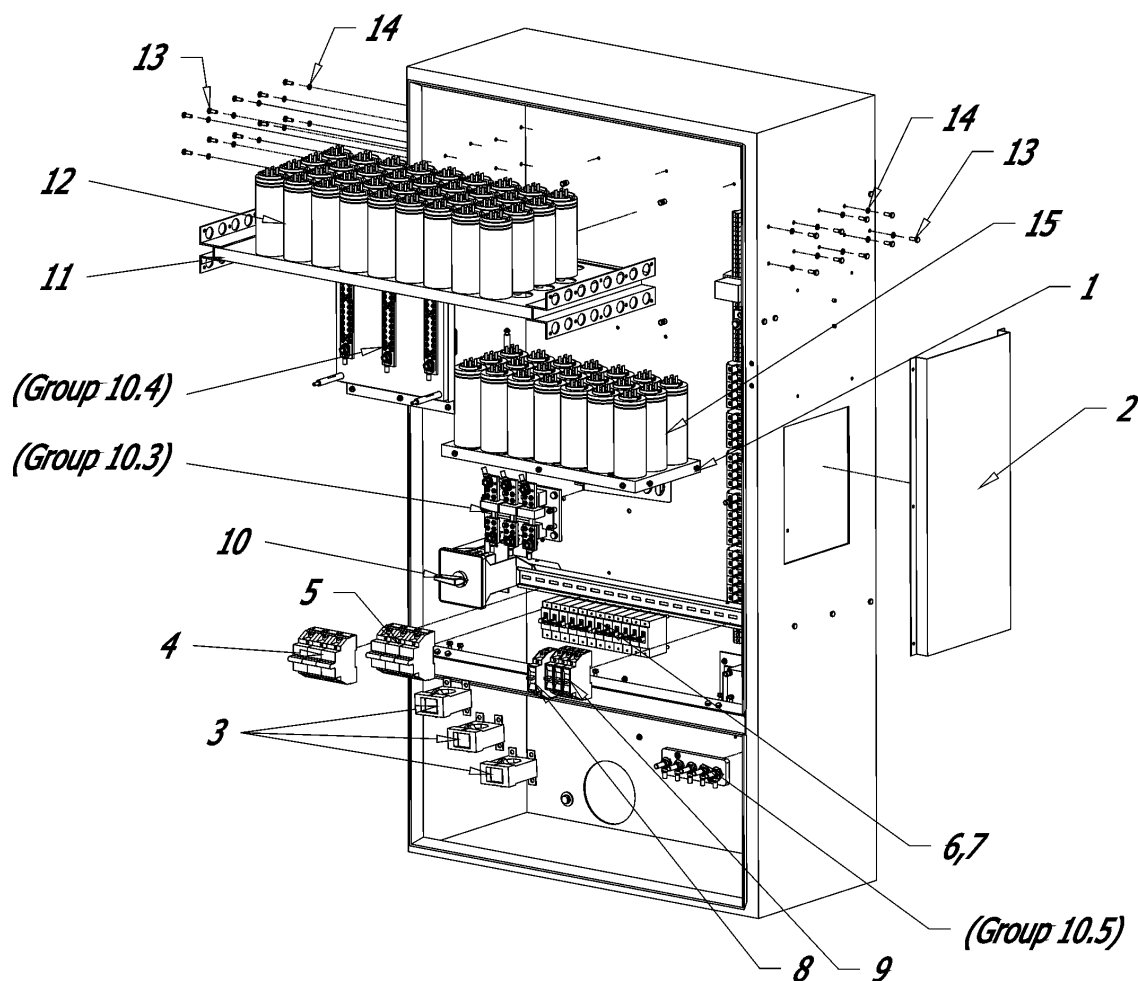


Group: 10 Electrical cabinet

Type: Panda 40-4 PSCH



Pos	Part Name	Bezeichnung	Spezifikation	Q'ty	Part number
1	Electrical cabinet door	Schaltschranktür	Z-20-23-215	1	G1Z1559E00-03
2	Hexagon socket head screw	Innensechskantschrauben	M03x10 DIN 965 A2	8	G3A20096503010
3	Closure E3 with turning knob	Riegelverschuß mit Drehknopf	E3-19-35 Art.Nr. 67455	2	J3ST440V 02
4	Grip low-placed body	Einbauadapter für Riegelverschuß	Z-12-01-035	2	G1Z1435E00
5	Electrical cabinet	Schaltschrank	Z-20-23-215	1	G1Z1559E00-01
6	Distance piece	Distanzstück	Z-20-23-215	2	G1Z1559E00-11
7	Flat steel	Flachstahl	Z-20-23-215	2	G1Z1559E00-12
8	Adapter for emergency-stop switch	Einbauadapter für Not-Aus	Z-12-01-032	1	G1Z1518E00
9	Emergency-stop switch	Not- Aus Schalter	NOT-AUS M22-PV	1	H5OT072K
10	Perspex	Plexiglas	Z-20-23-215	1	G1Z1559E00-05
11	Relay	Relais	RS 3297-443, 6-24V DC	2	H5RS3297443
12	Switch Marquardt	Schalter Marquardt	0145.1220#1248265	1	H5MR1248265
13	Switch door	Türendschalter	IEC 947-5-1 VDE0660	1	G2RD12586000
14	Control logic VCS	Steuerelektronik VCS	KE 140-2	1	F1MNKE1402
15	Compensation Board	Kompensation Platine	KE 140-5	1	F1MNKE1405
16	Relay	Industrirelais 3 poling Wechster	LP1 D0910	1	H5LP1D0910JD

**Group: 10.1 Electrical cabinet inside**
**Type: Panda 40-4 PSCH**


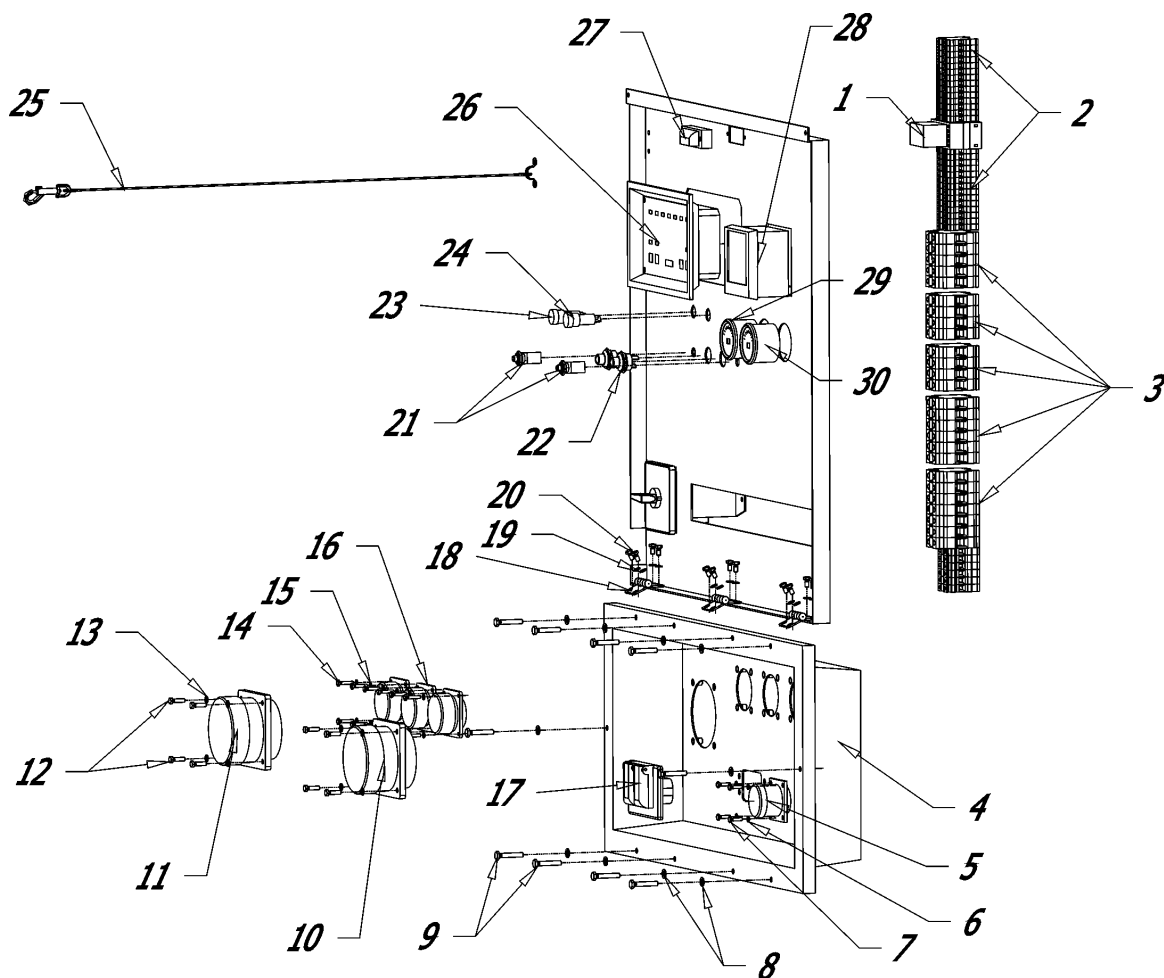
Pos	Part Name	Bezeichnung	Spezifikation	Q'ty	Part number
1	Capacitor bracket	Kondensatorenhalterung	Z-20-23-351	1	G1Z1561E00
2	Cover sheet	Abdeckung	Z-20-23-404	1	G1Z1571E00-01
3	Current transformer	Stromwandler	ASK 41.4 150/5 KI.1 5VA	3	F3DHASK414150-5
4	Automatic circuit breaker	Leitungsschutzschalter, Moeller	3x208VAC 100A	1	H5PLHTC100-3
5	Automatic circuit breaker	Leitungsschutzschalter, Moeller	3x208VAC 100A	1	H5PLHTC100-3
6	Automatic circuit breaker	Leitungsschutzschalter, Moeller	3x208VAC 63A	3	H5PLSMC63-3
7	Automatic circuit breaker	Leitungsschutzschalter, Moeller	3x208VAC 50A	1	H5CLS6C50-3
8	Automatic circuit breaker	Leitungsschutzschalter, Siemens	1x120V 20A	1	H5OT0657005
9	Automatic circuit breaker	Leitungsschutzschalter, Siemens	3x208VAC 16A	1	H5SX5SX23167
10	Switch 1-0-2	Umschalter 1-0-2	T3-2-8211/E	1	H50TT328211E
11	Capacitor bracket	Kondensatorenhalterung	Z-20-23-215	1	G1Z1559E00-06
12	Capacitor	Kondensator	100 µF C87.0	36	H50100100
13	Hexagon head screw	Sechskantschraube	M05x16 DIN 933 A2	20	G3A20093305016
14	Spring lock washer	Federring	D05 DIN 127 A2	20	G3A20012705
15	Capacitor	Kondensator	060 µF C87.0	21	H50100060

W:\ETL\Panda PSCH 40-4\ETL.fm 25.6.03

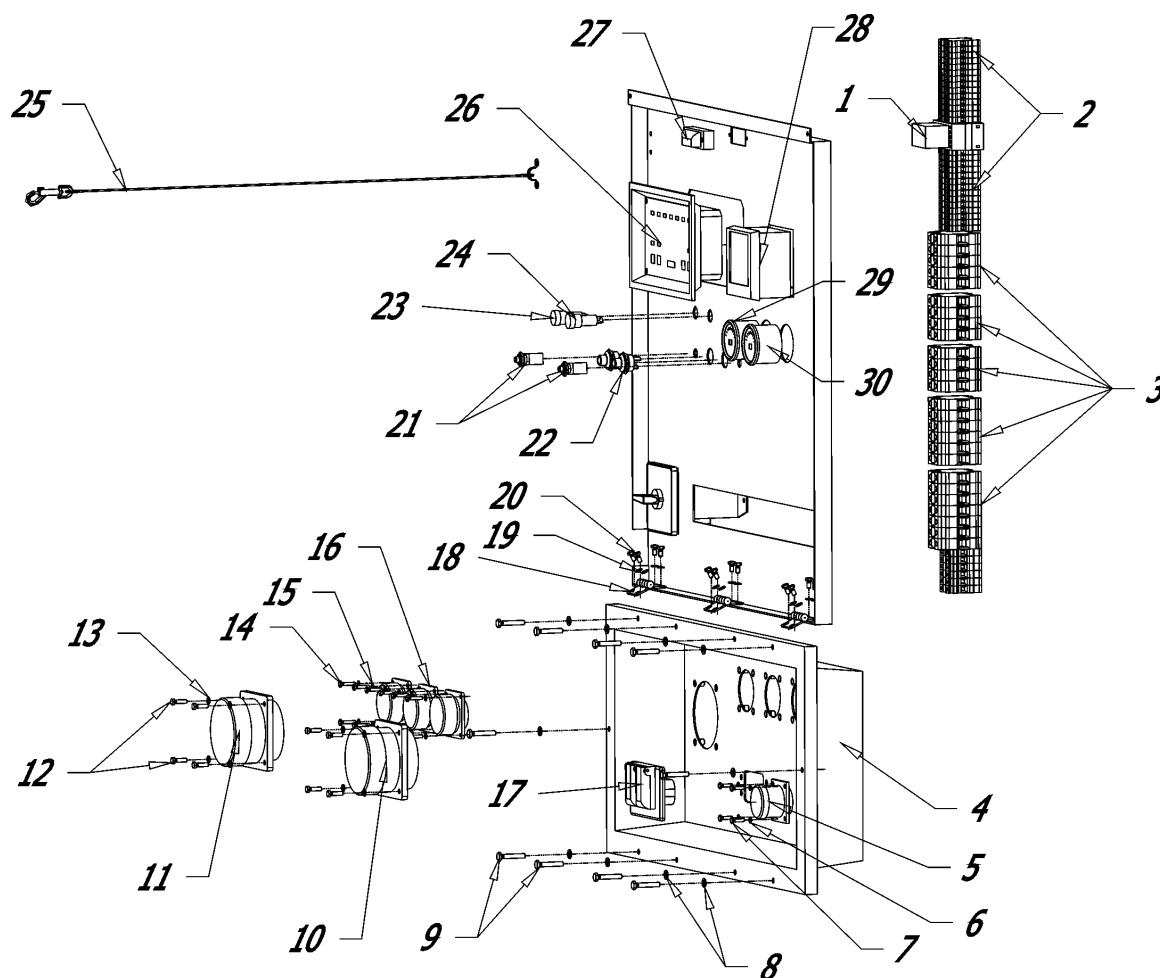


Group: 10.2 Operation unit and output

Type: Panda 40-4 PSCH



Pos	Part Name	Bezeichnung	Spezifikation	Q'ty	Part number
1	Relay	Industrirelais 3 poling Wechster	LP1 D0910	1	H5LP1D0910JD
2	Universal clamp "Phoenix Contact"	Universalklemme "Phoenix Contact"	UK 5 N # 3004362	28	H5PXUK05N
3	Universal clamp "Phoenix Contact"	Universalklemme "Phoenix Contact"	UK 35	26	H5PXUK05N
4	Output box	Anschlußkasten	Z-20-23-215	1	G1Z1559E00-02
5	Plug-in socket	Steckdose	AC-MS52131-1	1	S1FI0002
6	Spring lock washer	Federring	D04 DIN 127 A2	4	G3A20012704
7	Hexagon head screw	Sechskantschraube	M04x16 DIN 933 A2	4	G3A20093304016
8	Spring lock washer	Federring	D06 DIN 127 A2	10	G3A20012706
9	Hexagon head screw	Sechskantschraube	M06x35 DIN 933 A2	10	G3A20093306035
10	Plug-in socket	Steckdose	MS90555C52412S (208V,100A)	1	H5FIAMMS90555C52412S
11	Plug-in socket	Steckdose	MS90558C52412P (208V,100A)	1	H5FIAMMS90558C52512P
12	Hexagon head screw	Sechskantschraube	M06x20 DIN 933 A2	8	G3A20093306020
13	Spring lock washer	Federring	D06 DIN 127 A2	8	G3A20012706
14	Hexagon head screw	Sechskantschraube	M04x20 DIN 933 A2	12	G3A20093304020
15	Spring lock washer	Federring	D04 DIN 127 A2	12	G3A20012704

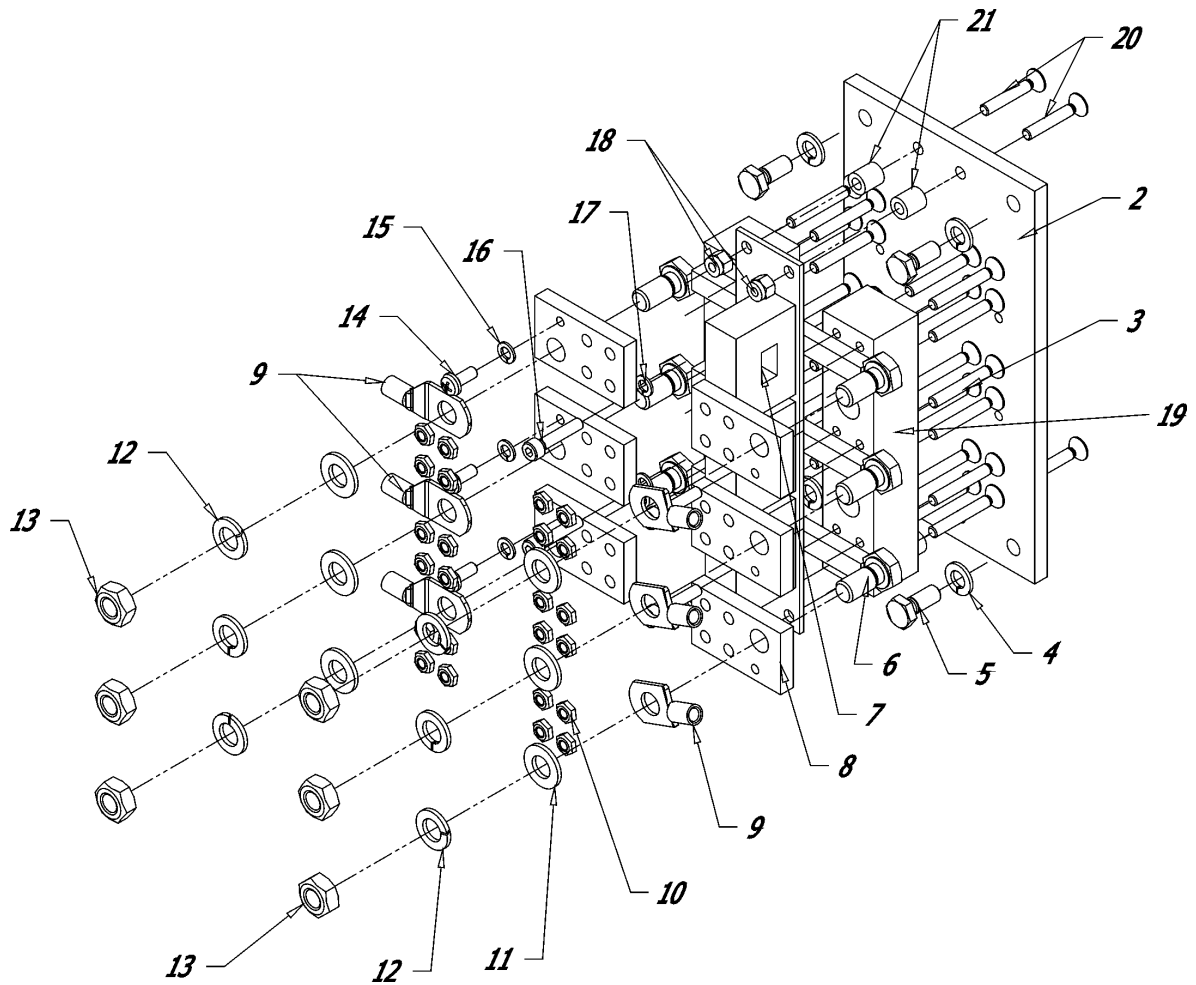
**Group: 10.2 Operation unit and output**
**Type: Panda 40-4 PSCH**


Pos	Part Name	Bezeichnung	Spezifikation	Q'ty	Part number
16	Plug-in socket	Steckdose	MS90558C32412S (208V,63A)	1	H5FIAMMS90558C32412S
17	Plug-in socket	Steckdose	1-phasig, 120V, 20A	2	H5FIWACR020WHI
18	Hinge	Niro-Scharnier	23x23mm, W=37mm	3	J3HL103250
19	Hexagon head screw	Sechskantschraube	M04x10 DIN 933 A2	12	G3A20093304010
20	Spring lock washer	Federring	D04 DIN 127 A2	12	G3A20012704
21	Switcher	Schalter Marquardt	0145.1220 # 1248265	2	H5MR1248265
22	Pusch button	Druckknopfschalter, Schließer	6JF 001 571-001 HELLA	2	H5HE6JF001571001
23	Control light-green	Kontrolleuchte grün, komplett	24V grün	1	H2BK38G2766K24
24	Control light-green	Kontrolleuchte grün, komplett	12V grün	1	H2BK38G2766K12
25	Steel cable	Stahlseil	Z-20-23-386	1	G1Z1565E00
26	Control Panel	Bedienpanel	WT.MIN 1S95BS; W151-B3-03	1	F1WT1-95E700
27	Light	Positionsleuchte	2PF 001 639-011	1	H5HE2PF001639011
28	Cube Meter	Multimeter	MULTICUBE	1	S1FI0020
29	Oillevelscope	Druckanzeiger mit Doppelskala	VDO 350-030-020C, 12V, 0-5bar	1	G2DA350030020C
30	Thermoscope	Temperaturanzeiger mit Doppelskala	VDO 310-030-020C, 12V, 40-120°C	1	G2TA310030020C

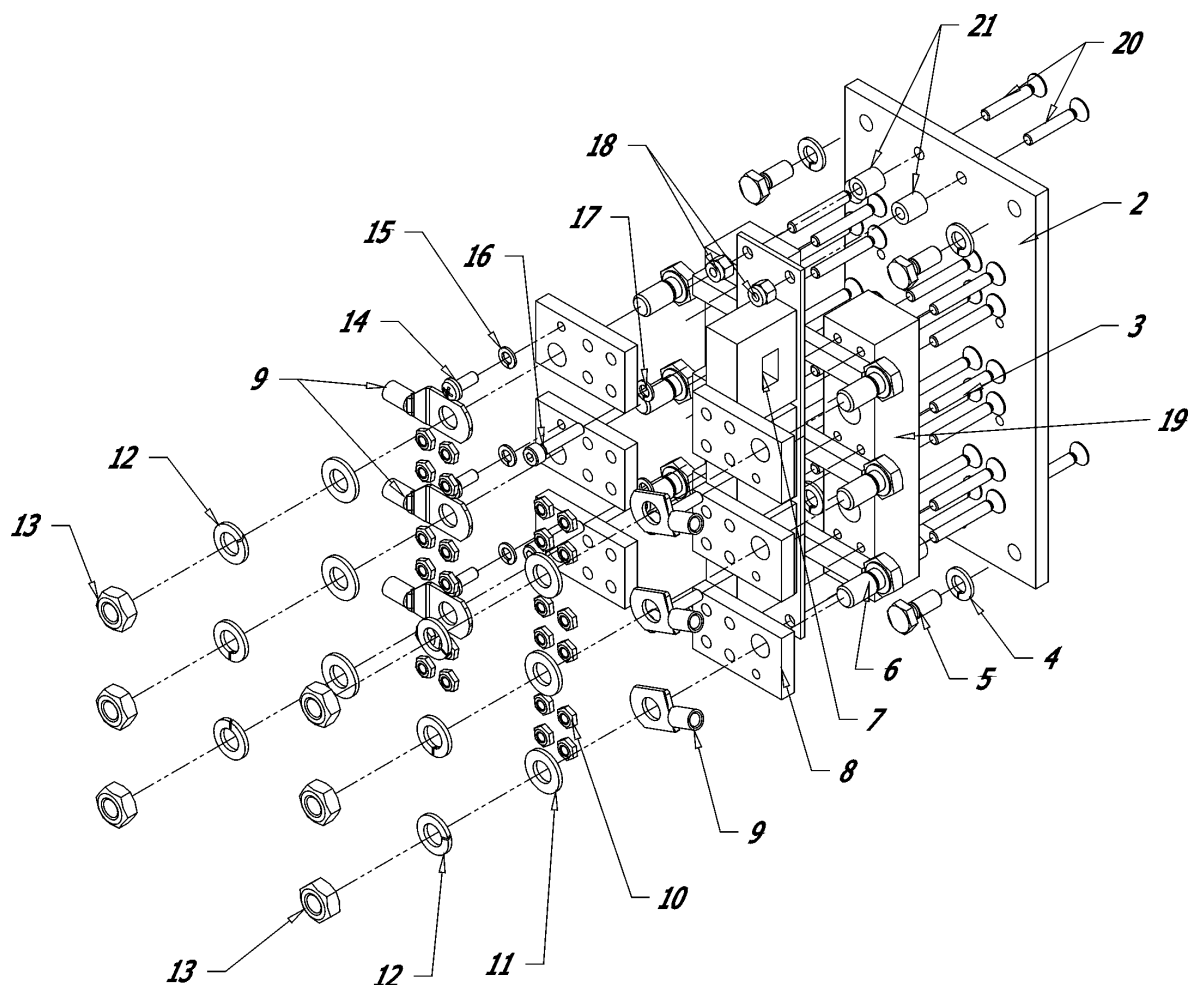
W:\ETL\Panda PSCH 40-4\ETL.fm 25.6.03

Group: 10.3 Load and voltage sensing board

Type: Panda 40-4 PSCH



Pos	Part Name	Bezeichnung	Spezifikation	Q'ty	Part number
1	Countersunk head screw	Senkschraube	M04x25 DIN 965 blank-Ms	4	G3Ms0096504025
2	Plate	Platte	Z-20-23-375	1	G1Z1569E00-01
3	Countersunk head screw	Senkschraube	M04x30 DIN 963 blank-Ms	24	G3Ms0096304030
4	Spring lock washer	Federring	D06 DIN 127 A2	4	G3A20012706
5	Hexagon head screw	Sechskantschraube	M06x14 DIN 933 A2	4	G3A20093306014
6	Hexagon head screw	Sechskantschraube	M08x16 DIN 933 A2	6	G3A20093308016
7	Sensing board	Strommessplatine	KE 140-1A	1	F1MNKE1401
8	Terminal plate	Anschlußplatte	Z-20-23-375	6	G1Z1569E00-03
9	Cable lug	Kabelschuh E-Cu Vs 035 mm <sup>2</sup>	035 mm <sup>2</sup> M08	6	H2RK08035
10	Hexagon nut	Sechskantmutter	M04 DIN 934 blank-Ms	24	G3Ms0093404
11	Medium washer	Unterlegscheibe	D08 DIN 125 A2	6	G3A20012508
12	Spring lock washer	Federring	D08 DIN 127 A2	6	G3A20012708
13	Hexagon nut	Sechskantmutter	M08 DIN 934 A2	6	G3A20093408
14	Rounded head screw	Linsenkopfschraube	M04x10 DIN 7985 A2	6	G3A20798504010
15	Spring lock washer	Federring	D04 DIN 127 A2	6	G3A20012704

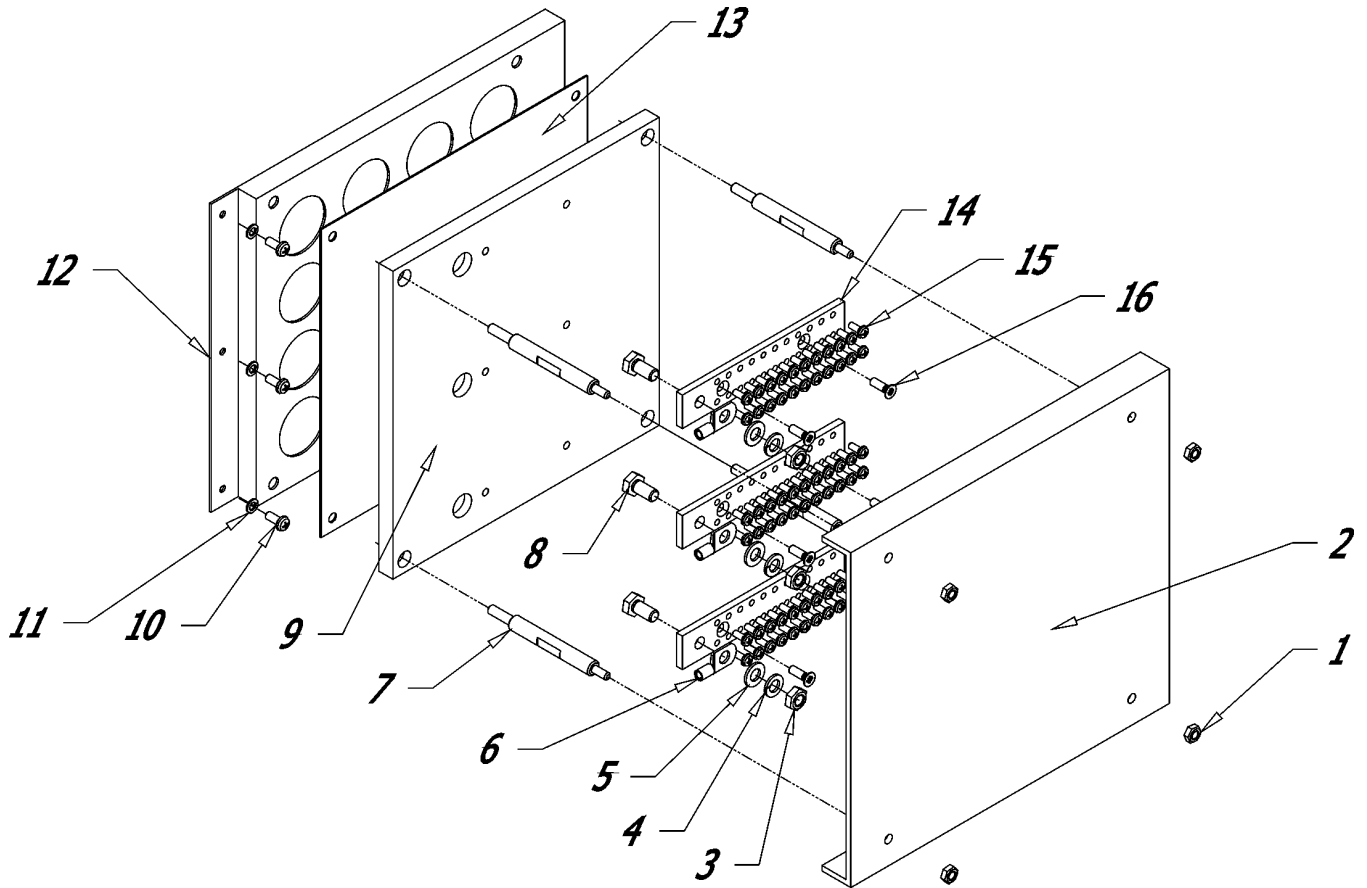
**Group: 10.3 Load and voltage sensing board**
**Type: Panda 40-4 PSCH**


Pos	Part Name	Bezeichnung	Spezifikation	Q'ty	Part number
16	Hexagon socket head cap screw	Innensechschraube	M04x20 DIN 912 A2	4	G3A20091204020
17	Spring lock washer	Federring	D04 DIN 127 A2	4	G3A20012704
18	Hexagon protective nut	Sechskantmutter, selbstsichernd	M04 DIN 985 blank-MS	4	G3MS00985404
19	Textolit	Isolierplatte	Z-20-23-375	2	G1Z1569E00-04

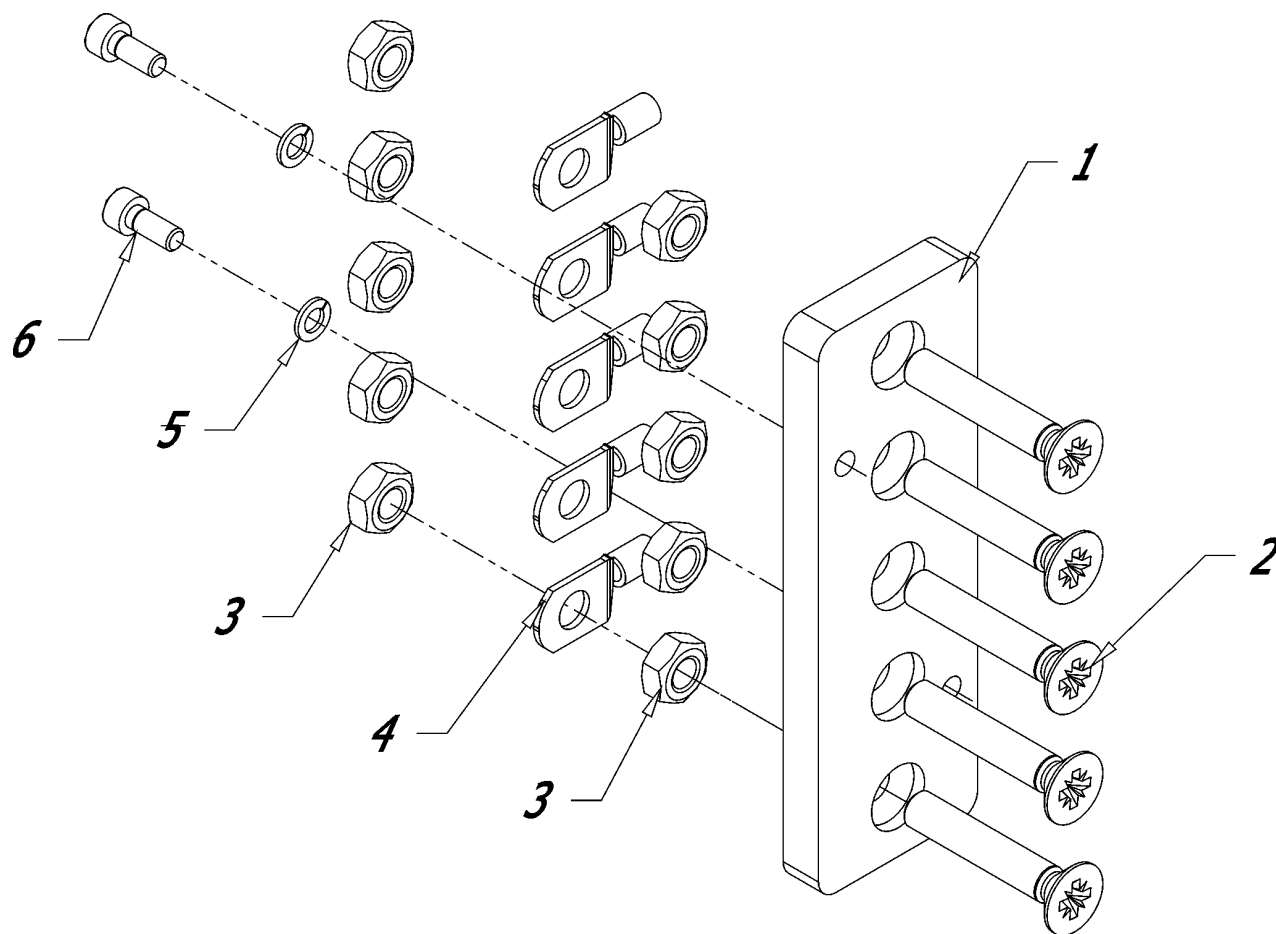
W:\ETL\Panda PSCH 40-4\ETL.fm 25.6.03

Group: 10.4 Capacitors terminal block

Type: Panda 40-4 PSCH



Pos	Part Name	Bezeichnung	Spezifikation	Q'ty	Part number
1	Hexagon nut	Sechskantmutter	M06 DIN 934 A2	4	G3A20093406
2	Perplex cover	Plexi Schutzabdeckung	Z-20-23-233	1	G1Z1572E00-01
3	Hexagon nut	Sechskantmutter	M08 DIN 934 A2	3	G3A20093408
4	Spring lock washer	Federring	D08 DIN 127 A2	3	G3A20012708
5	Medium washer	Unterlegscheibe	D08 DIN 125 A2	3	G3A20012508
6	Cable lug	Kabelschuh E-Cu Vs 035 mm <sup>2</sup>	035 mm <sup>2</sup> M08	3	H2RK08035
7	Stud bolt	Stiftschraube	Z-20-23-230	4	G1Z1573E00-01
8	Hexagon head screw	Sechskantschraube	M08x16 DIN 933 A2	3	G3A20093308016
9	Textolit	Isolierplatte	Z-20-23-215	1	G1Z1559E00-07
10	Rounded head screw	Linsenkopfschraube	M05x12 DIN 7985 A2	3	G3A20798505012
11	Spring lock washer	Federring	D05 DIN 127 A2	3	G3A20012705
12	Plate	Platte	Z-20-23-215	1	G1Z1559E00-08
13	Textolit	Isolierplatte	Z-20-23-215	1	G1Z1559E00-10
14	Terminal plate	Anschlußplatte	Z-20-23-215	3	G1Z1559E00-09
15	Rounded head screw	Linsenkopfschraube	M04x10 DIN 7985 A2	66	G3A20798504010
16	Countersunk head screw	Senkschraube	M05x16 DIN 965A2	6	G3A20096505016

**Group: 10.5 Terminal block ECU**
**Type: Panda 40-4 PSCH**


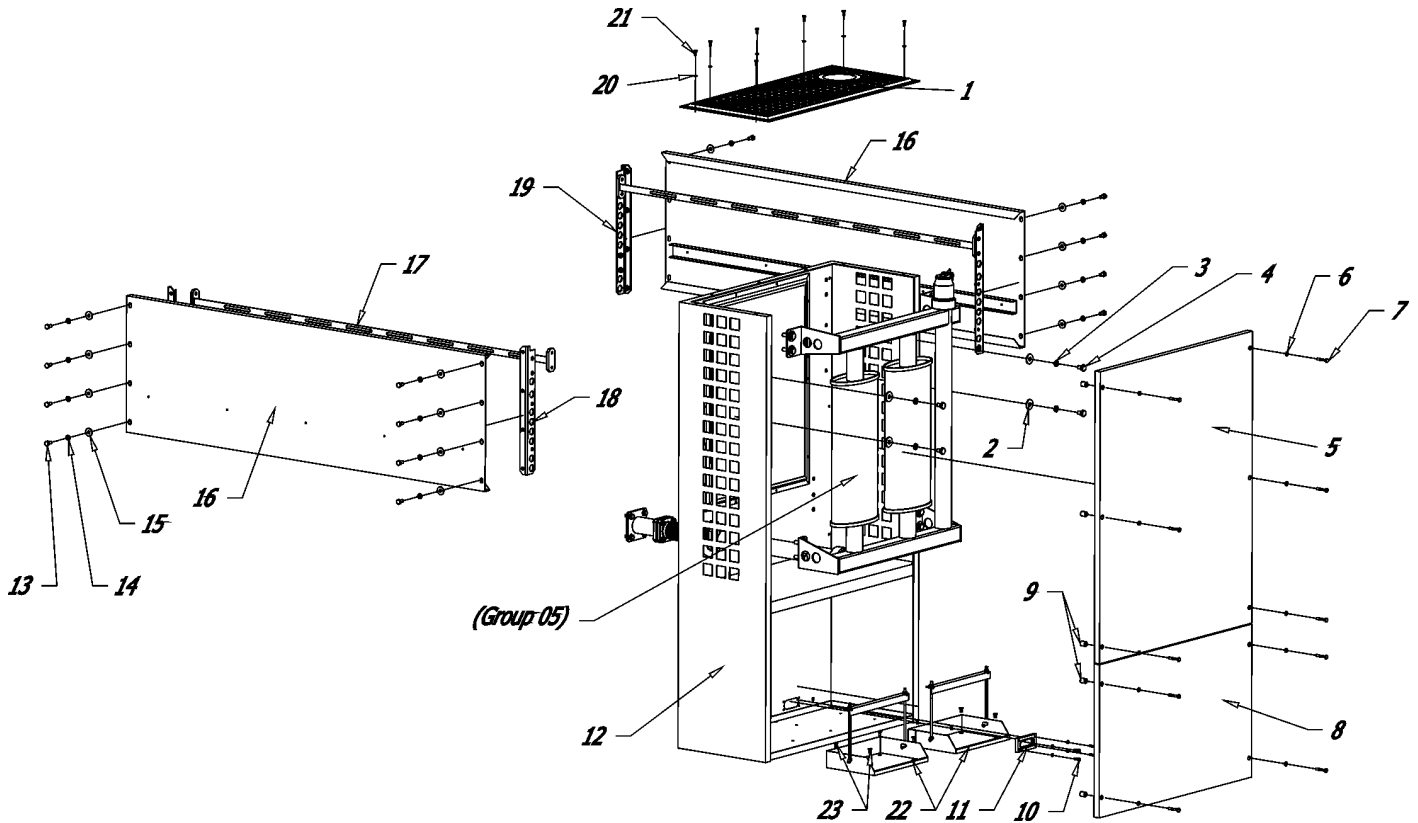
Pos	Part Name	Bezeichnung	Spezifikation	Q'ty	Part number
1	Insulation plate	Isolierplatte	Z-07-83-000	1	G1Z1568E00
2	Countersunk head screw	Senkschraube	M08x35 DIN 965 blank-Ms	5	G3Ms0096508035
3	Hexagon nut	Sechskantmutter	M08 DIN 934 blank-Ms	10	G3Ms0093408
4	Cable lug	Kabelschuh E-Cu Vs 035 mm <sup>2</sup>	035 mm <sup>2</sup> M08	5	H2RK08035
5	Spring lock washer	Federring	D05 DIN 127 A2	2	G3A20012705
6	Rounded head screw	Linsenkopfschraube	M05x12 DIN 7985 A2	2	G3A20798505012

W:\ETL\Panda PSCH 40-4\ETL.fm 25.6.03

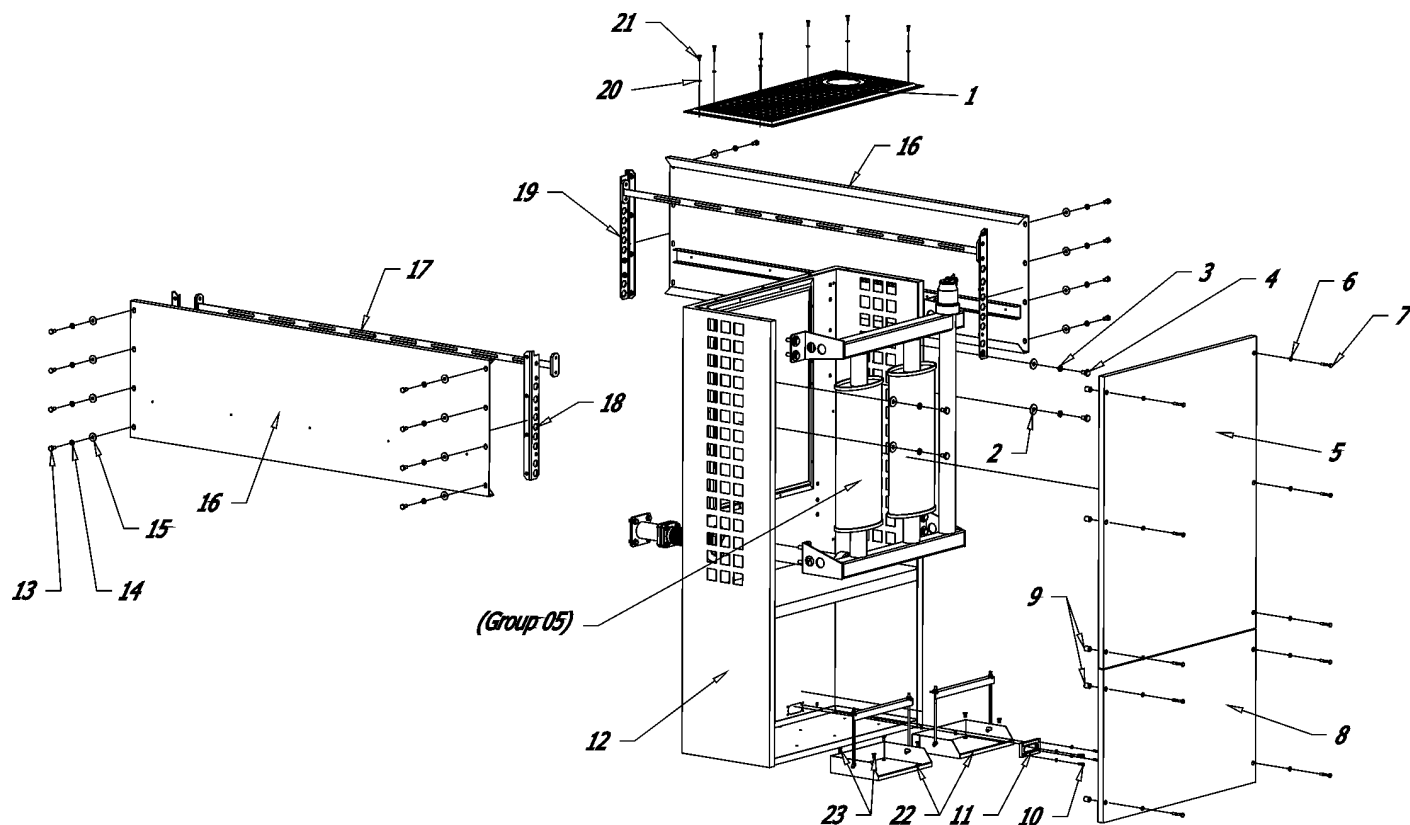


## Group: 11 Covers

Type: Panda 40-4 PSCH



Pos	Part Name	Bezeichnung	Spezifikation	Q'ty	Part number
1	Pre- silencer top cover	Abdeckung Vorschalldämpfer	Z-20-23-269	1	G1Z1582E00-01
2	Plain washer	Unterlegscheibe	D08 DIN 9021 A2	4	G3A20902108
3	Spring lock washer	Federring	D08 DIN 127 A2	4	G3A20012708
4	Hexagon head screw	Sechskantschraube	M08x16 DIN 933 A2	4	G3A20093308016
5	Front upper cover	Kühlergitter Oberteil	Z-20-23-214	1	G1Z1583E00-02
6	Spring lock washer	Federring	D06 DIN 127 A2	10	G3A20012706
7	Hexagon head screw	Sechskantschraube	M06x35; Z-20-23-384	10	G1Z1585E00
8	Front lower cover	Kühlergitter Unterteil	Z-20-23-214	1	G1Z1583E00-03
9	Distance piece	Distanzstück	Z-20-23-385	10	G1Z1584E00
10	Hexagon head screw	Sechskantschraube	M04x16 DIN 933 A2	4	G3A20093304016
11	Bakelite	Bakelit	Z-20-23-365	1	G1Z1574E00
12	Pre- silencer cover	Abdeckung Vorschalldämpfer	Z-20-23-214	1	G1Z1583E00-01
13	Hexagon head screw	Sechskantschraube	M08x16 DIN 933 A2	16	G3A20093308016
14	Spring lock washer	Federring	D08 DIN 127 A2	16	G3A20012708
15	Plain washer	Unterlegscheibe	D08 DIN 9021 A2	16	G3A20902108

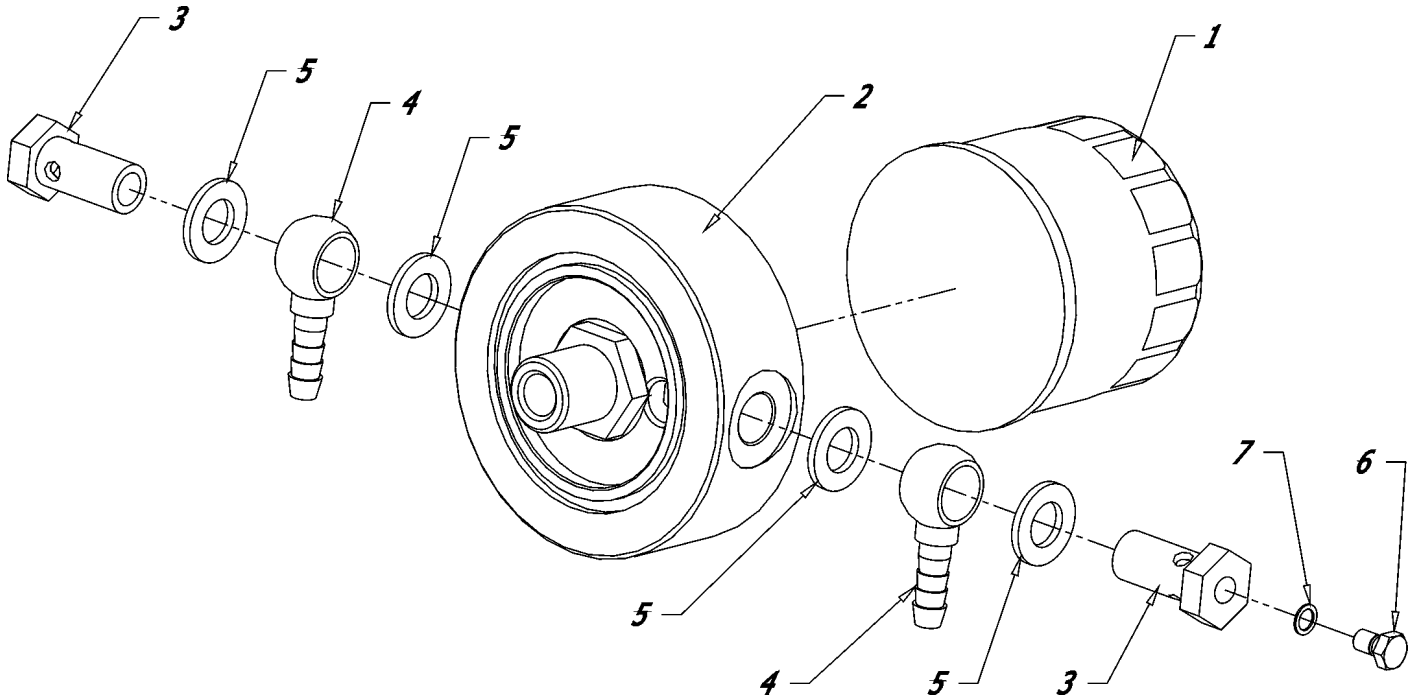
**Group: 11 Covers**
**Type: Panda 40-4 PSCH**


Pos	Part Name	Bezeichnung	Spezifikation	Q'ty	Part number
16	Radiator cover	Kühlerabdeckung	Z-20-23-213	2	G1Z1586E00
17	Radiator bracket	Kühlerhalterung	Z-20-23-358	2	G1Z1587E00
18	Pre- silencer cover bracket	Halterung Abdeckung Vorschall- dämpfer	Z-20-23-362	2	G1Z1588E00
19	Radiator cover bracket	Halterung Kühlerabdeckung	Z-20-23-363	2	G1Z1589E00
20	Spring lock washer	Federring	D05 DIN 127 A2	7	G3A20012705
21	Hexagon head screw	Sechskantschraube	M05x12 DIN 933 A2	7	G3A20093305012
22	Battery box	Batteriekasten	Z-12-01-051	2	G1Z1560E00
23	Countersunk screw	Senkkopfschraube	M05x10 DIN 965 A2	8	G3A20096505010

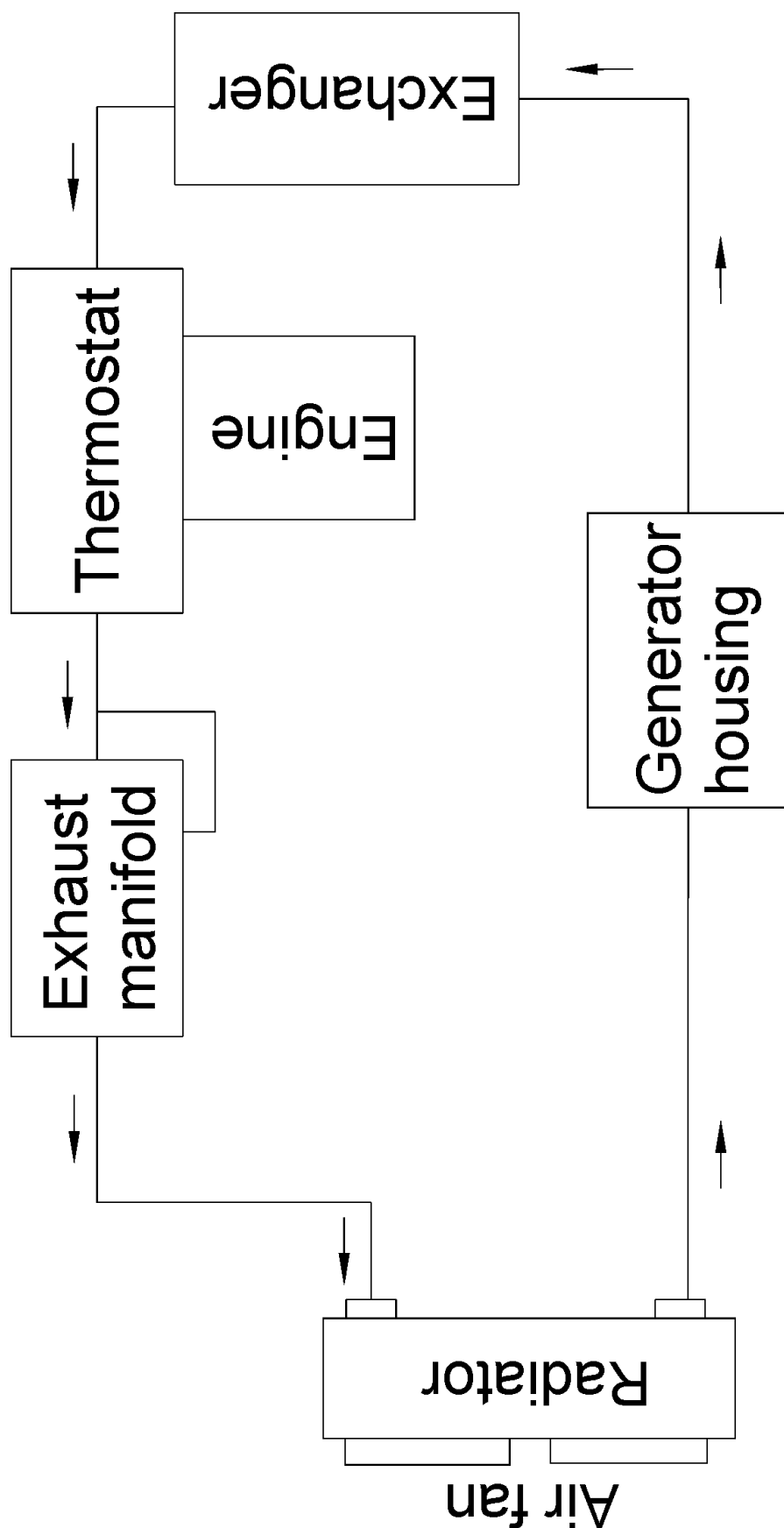
W:\ETL\Panda PSCH 40-4\ETL.fm 25.6.03

Group: 12 Oil filter

Type: Panda 40-4 PSCH

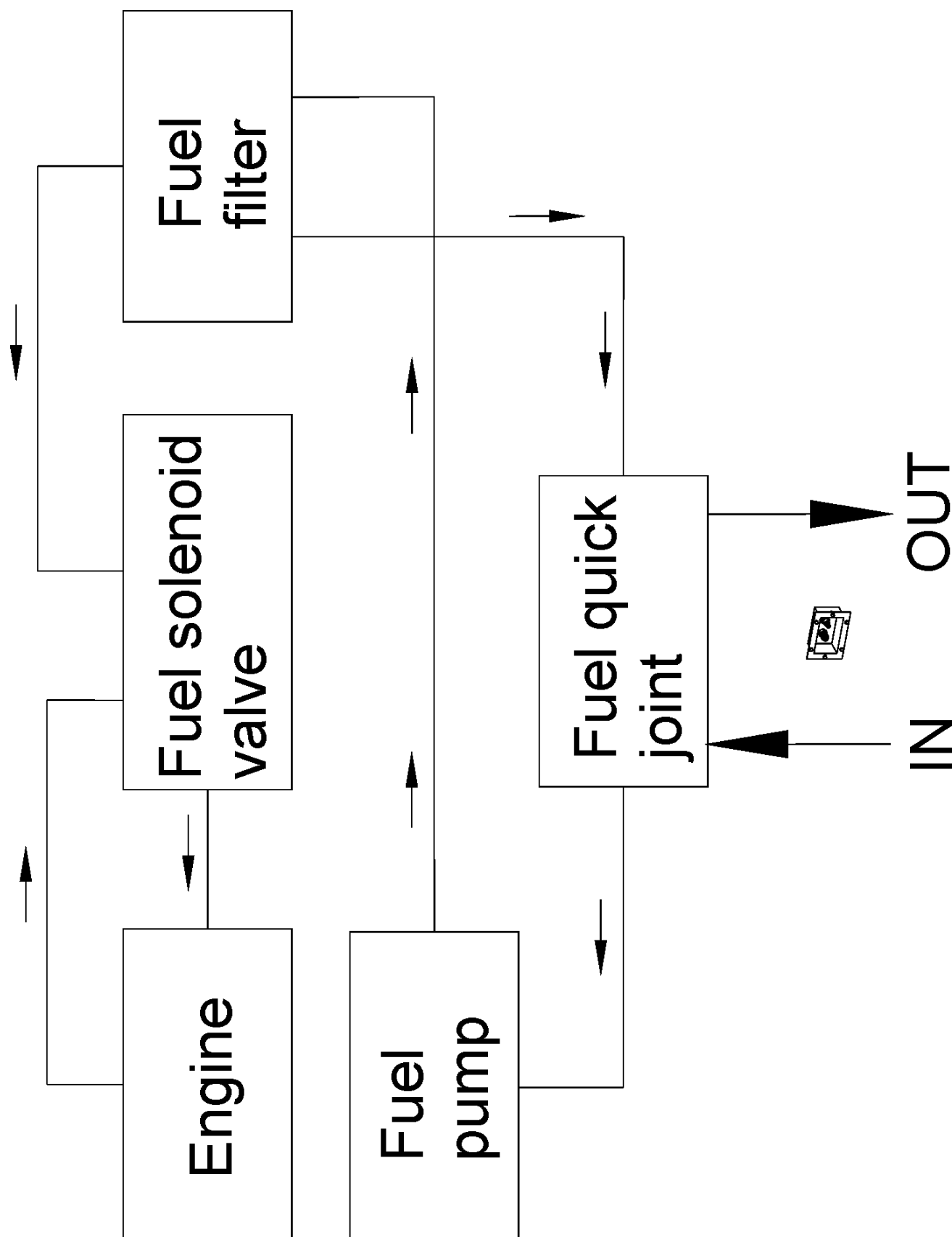


Pos	Part Name	Bezeichnung	Spezifikation	Q'ty	Part number
1	Oil filter	Ölfilter	1C010-3243-0	1	K21C01032430
2	Oil filter distance piece	Adapterstück für Ölkühleranschluß	Z-20-23-241	1	G1Z1591E00
3	Hexagon screw HS10	Hohlschraube HS10	HS10	2	G2SC205010
4	Banjo union	Rohrbogen	R10	2	G2SC203410
5	Medium washer Cu	Dichtung Cu	16x22x1,5 DIN 7603 Cu	4	G3Cu07603162215
6	Hexagon head screw	Entlüftungsschraube	M06x10	1	G1SW0157
7	Medium washer Cu	Unterlegscheibe Cu	06x10x1,0 DIN 7603 Cu	1	G3Cu07603061010

**Group: 13 Cooling water flow scheme**
**Type: Panda 40-4 PSCH**


W:\ETL\Panda PSCH 40-4ETL.m 25.6.03

Group: 14 Fuel flow scheme	Type: Panda 40-4 PSCH
----------------------------	-----------------------





**Part No. Index**

F1MNKE1401 .....	27	G1Z1544E00 .....	12
F1MNKE1402 .....	23	G1Z1545E00 .....	12
F1MNKE1405 .....	23	G1Z1546E00 .....	14
F1WT1-95E700 .....	26	G1Z1546E00-01 .....	14
F3DHASK414150-5 .....	24	G1Z1547E00-01 .....	14
F6AB3032 .....	18	G1Z1547E00-02 .....	14
F6PAKA60-70o .....	21	G1Z1547E00-03 .....	14
F6ZG126835 .....	22	G1Z1548E00-01 .....	18
F7500-1215 .....	21	G1Z1549E00 .....	18
F7500-1615 .....	13	G1Z1550E00 .....	18
F7500-3715 .....	20	G1Z1551E00 .....	18
G1030HS6M8 .....	8	G1Z1552E00 .....	19
G105008-600 .....	9	G1Z1553E00-01 .....	20
G1SW0157 .....	33	G1Z1553E00-02 .....	20
G1SW0157 .....	8	G1Z1554E00 .....	21
G1Z1028E00 .....	19	G1Z1555E00 .....	21
G1Z1029E00 .....	19	G1Z1556E00 .....	21
G1Z1042E00 .....	7	G1Z1557E00 .....	21
G1Z1043E00 .....	7	G1Z1558E00 .....	22
G1Z1082E00 .....	15	G1Z1559E00-01 .....	23
G1Z1092E00 .....	9	G1Z1559E00-02 .....	25
G1Z1259E00 .....	19	G1Z1559E00-03 .....	23
G1Z1328E00 .....	7	G1Z1559E00-05 .....	23
G1Z1401E00 .....	20	G1Z1559E00-06 .....	24
G1Z1406E00 .....	20	G1Z1559E00-07 .....	29
G1Z1426E00 .....	22	G1Z1559E00-08 .....	29
G1Z1435E00 .....	17	G1Z1559E00-09 .....	29
G1Z1435E00 .....	23	G1Z1559E00-10 .....	29
G1Z1473E00 .....	9	G1Z1559E00-11 .....	23
G1Z1518E00 .....	23	G1Z1559E00-12 .....	23
G1Z1530E00 .....	10	G1Z1560E00 .....	32
G1Z1531E00 .....	10	G1Z1561E00 .....	24
G1Z1532E00-01 .....	10	G1Z1565E00 .....	26
G1Z1533E00 .....	10	G1Z1566E00-01 .....	16
G1Z1534E00 .....	11	G1Z1566E00-02 .....	16
G1Z1535E00 .....	11	G1Z1566E00-03 .....	15
G1Z1536E00 .....	11	G1Z1566E00-04 .....	15
G1Z1537E00 .....	11	G1Z1566E00-05 .....	15
G1Z1538E00 .....	11	G1Z1566E00-06 .....	16
G1Z1539E00 .....	7	G1Z1566E00-07 .....	17
G1Z1540E00 .....	7	G1Z1566E00-08 .....	17
G1Z1541E00 .....	8	G1Z1567E00 .....	15
G1Z1542E00-01 .....	13	G1Z1568E00 .....	30
G1Z1542E00-02 .....	13	G1Z1569E00-01 .....	27
G1Z1542E00-03 .....	13	G1Z1569E00-03 .....	27
G1Z1543E00-01 .....	12	G1Z1569E00-04 .....	28
G1Z1543E00-02 .....	12	G1Z1571E00-01 .....	24
G1Z1543E00-03 .....	12	G1Z1572E00-01 .....	29
G1Z1543E00-03 .....	12	G1Z1573E00-01 .....	29

## Part No. Index

G1Z1574E00	15	G3A20012704	15
G1Z1574E00	31	G3A20012704	15
G1Z1575E00	15	G3A20012704	16
G1Z1576E00	16	G3A20012704	22
G1Z1578E00	16	G3A20012704	25
G1Z1579E00	17	G3A20012704	25
G1Z1580E00	14	G3A20012704	26
G1Z1581E00	17	G3A20012704	27
G1Z1582E00-01	31	G3A20012704	28
G1Z1583E00-01	31	G3A20012705	21
G1Z1583E00-02	31	G3A20012705	24
G1Z1583E00-03	31	G3A20012705	29
G1Z1584E00	31	G3A20012705	30
G1Z1585E00	31	G3A20012705	32
G1Z1586E00	32	G3A20012706	13
G1Z1587E00	32	G3A20012706	18
G1Z1588E00	32	G3A20012706	18
G1Z1589E00	32	G3A20012706	19
G1Z1590E00	17	G3A20012706	20
G1Z1591E00	33	G3A20012706	20
G1Z1592E00	6	G3A20012706	25
G1Z1593E00	9	G3A20012706	25
G1ZA1577E00	16	G3A20012706	27
G2100THO105-2	9	G3A20012706	31
G2100THO120-2	18	G3A20012708	11
G2100THO120-2	9	G3A20012708	11
G2100THS083-2	21	G3A20012708	13
G2100THS098-2	9	G3A20012708	13
G2160C34103	13	G3A20012708	20
G228213x970Ld	6	G3A20012708	21
G25106214C3L453	10	G3A20012708	27
G2DA350030020C	26	G3A20012708	29
G2DG360081032002C	9	G3A20012708	31
G2GS2489B004a	8	G3A20012708	31
G2GS2489B004b	8	G3A20012708	7
G2RD12586000	23	G3A20012708	9
G2SC203410	33	G3A20012710	10
G2SC205002	18	G3A20012710	10
G2SC205002	8	G3A20012710	10
G2SC205010	33	G3A20012710	11
G2SC205154	9	G3A20012710	11
G2SF0166401041004	9	G3A20012710	14
G2TA310030020C	26	G3A20012710	16
G3A20012504	12	G3A20012710	17
G3A20012508	27	G3A20012710	5
G3A20012508	29	G3A20012712	6
G3A20012510	16	G3A20083508030	18
G3A20012703	7	G3A20091204020	28
G3A20012704	12	G3A20091205012	21



**Part No. Index**

G3A20091206010	18	G3A20096503010	23
G3A20091206012	13	G3A20096505010	32
G3A20091206025	19	G3A20096505016	29
G3A20091206035	20	G3A20096506030	12
G3A20091208016	13	G3A20096508035	11
G3A20091208025	12	G3A20692108020	14
G3A20091208025	9	G3A20704506012	20
G3A20091208080	7	G3A20798008	12
G3A20091210030	10	G3A20798010	10
G3A20093304010	15	G3A20798408025	11
G3A20093304010	26	G3A20798410035	10
G3A20093304012	16	G3A20798503012	7
G3A20093304016	25	G3A20798503020	19
G3A20093304016	31	G3A20798503020	19
G3A20093304020	15	G3A20798503030	20
G3A20093304020	25	G3A20798504010	16
G3A20093305012	32	G3A20798504010	27
G3A20093305016	24	G3A20798504010	29
G3A20093306014	27	G3A20798504012	12
G3A20093306020	18	G3A20798504012	22
G3A20093306020	25	G3A20798505006	19
G3A20093306035	25	G3A20798505010	21
G3A20093308016	21	G3A20798505012	29
G3A20093308016	27	G3A20798505012	30
G3A20093308016	29	G3A20902104	15
G3A20093308016	31	G3A20902108	20
G3A20093308016	31	G3A20902108	21
G3A20093308020	20	G3A20902108	31
G3A20093308025	21	G3A20902108	31
G3A20093308030	12	G3A20902110	14
G3A20093308035	14	G3A20902110	17
G3A20093308045	13	G3A20902110	5
G3A20093308055	11	G3A250093810x40	10
G3A20093310025	11	G3A250093810x40	10
G3A20093310035	14	G3Cu076030601010	8
G3A20093310060	11	G3Cu07603061010	18
G3A20093310065	5	G3Cu07603061010	33
G3A20093310070	5	G3Cu07603061010	8
G3A20093310095	17	G3Cu07603121815	8
G3A20093404	12	G3Cu076031401815	18
G3A20093406	29	G3Cu07603142215	9
G3A20093408	27	G3Cu07603162215	33
G3A20093408	29	G3Ms0093404	27
G3A20093408	7	G3Ms0093408	30
G3A20093410	10	G3Ms0096304030	27
G3A20093410	10	G3Ms0096504025	27
G3A20093410	16	G3Ms0096508035	30
G3A20093910045	16	G3Ms00985404	28
G3A20096503010	15	G3Vk14441M08	14



## Part No. Index

G3Vk14441M08 .....	18	K21C01032430 .....	33
G3Vz0092705006G .....	7	K21C04017010 .....	6
G3Vz0096112x1,25x25G .....	6	K2EMA5102L .....	6
G6PI721440510 .....	20	RA125J3100RAEM125B .....	16
G7TGNW05-290 .....	8	S1FI0002 .....	25
G7TGNW08-575 .....	8	S1FI0020 .....	26
H2BK38G2766K12 .....	26		
H2BK38G2766K24 .....	26		
H2RK08035 .....	27		
H2RK08035 .....	29		
H2RK08035 .....	30		
H2RK10035 .....	13		
H50100060 .....	24		
H50100100 .....	24		
H50TT328211E .....	24		
H511015A .....	19		
H511025A .....	19		
H5BH16104631305 .....	7		
H5CLS6C50-3 .....	24		
H5FIAMMS90555C52412S .....	25		
H5FIAMMS90558C32412S .....	26		
H5FIAMMS90558C52512P .....	25		
H5FIWACR020WHI .....	26		
H5HE2PF001639011 .....	26		
H5HE4RA003510067 .....	19		
H5HE6JF001571001 .....	26		
H5HE8JA003526002 .....	19		
H5HE8JA007024001 .....	19		
H5HE8KV002132001 .....	19		
H5LP1D0910JD .....	23		
H5LP1D0910JD .....	25		
H5MR1248265 .....	23		
H5MR1248265 .....	26		
H5OT0657005 .....	24		
H5OT072K .....	23		
H5PLHTC100-3 .....	24		
H5PLHTC100-3 .....	24		
H5PLSMC63-3 .....	24		
H5PXUK05N .....	25		
H5PXUK05N .....	25		
H5RS3297443 .....	23		
H5SX5SX23167 .....	24		
J3100RAEM350A .....	17		
J3CAV951L041x5BP .....	12		
J3HL103250 .....	26		
J3ST440V 02 .....	15		
J3ST440V 02 .....	23		
J3STP242 .....	17		
K21625960250 .....	20		