

NOTES:

1. APPLICABLE STANDARDS/SPECIFICATIONS:
A. DOD-STD-00100D(AR)
B. ANSI-Y14.5M-1982
2. THIS DRAWING IS FOR INSTALLATION PURPOSES ONLY. ALL ITEMS MARKED * ARE INCLUDED IN KIT.
3. LEGEND IDENTIFIED AS FOLLOWS:
* NEW PARTS
△ PARTS TO BE REMOVED AND REUSED
□ PARTS TO BE REWORKED
□ PARTS ARE EXCESS AND CAN BE USED ELSEWHERE
4. OPTIONAL HOLE LOCATIONS:
USE BRACKET 12370472-1 AS A TEMPLATE.
5. CAUTION
DO NOT DAMAGE FUEL TANKS WHEN DRILLING HOLES.
6. OPTIONAL HOLE LOCATIONS:
USE BRACKET 12370472-2 AS A TEMPLATE.
7. REWORK 11594841 INTO 12370474 PER DWG 12370474.
8. REWORK 11594951 INTO 12370473 PER DWG 12370473.
9. APPLY ON ALL MATING SURFACES:
SEALANT - MIL-S-81733.
10. DIMENSIONING AND TOLERANCING APPLY TO THRU HOLES IN BODY.

- ⊕ PANEL-11594841 (7)
- △ 17-SCREW-MS24629-48
- △ 17-WASHER-MS35338-43
- SCREW-MS24629-48
- WASHER-MS35338-43

Provided by WSUCougarRx

SECTION A-A

△ SEAT ASSY-11594487

⊕ CONSOLE ASSY-11594951 (8)

△ SEAT ASSY-11594488

TOP OF FLOOR IN CREW COMPARTMENT REF

PASSENGER'S SEAT

VEHICLE (LOOKING REARWARD)

DRIVER'S SEAT

BEFORE MODIFICATION

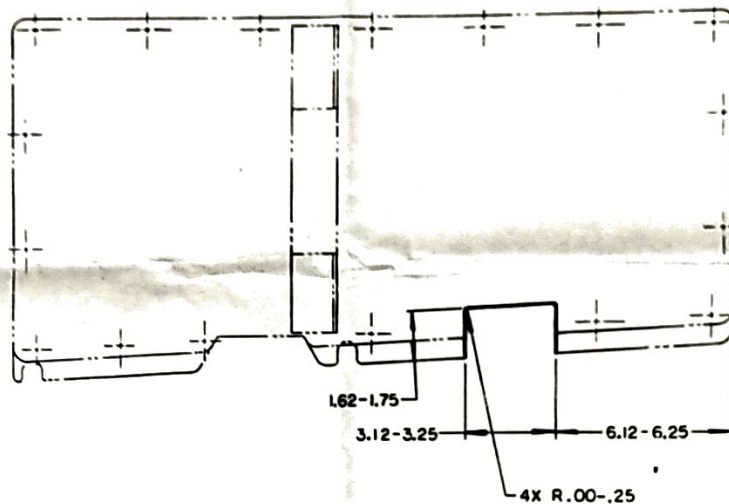
57K1166		M792	M561	USED ON	APPLICATION
NEXT ASBY		MAY, 1980			
CONTRACT NUMBER		CONTRACTOR			
DESIGNER		CHECKER			
JEFFS-04-12		EEL			
DATE		DATE			
1979		1979			
U.S. ARMY TANK - AUTOMOTIVE COMMAND		U.S. ARMY TANK - AUTOMOTIVE COMMAND			
WARREN, MICHIGAN 48397-0000		WARREN, MICHIGAN 48397-0000			
INSTALLATION INSTRUCTIONS		INSTALLATION INSTRUCTIONS			
SEAT BELT MODIFICATION		SEAT BELT MODIFICATION			
KIT 57K1166		KIT 57K1166			
E 19207		E 19207			
12370470		12370470			
SCALE 1/2		SCALE 1/2			
SHEET 1 OF 2		SHEET 1 OF 2			

12370470

12370470

NOTES:

1. APPLICABLE STANDARDS/SPECIFICATIONS:
A. DOD-STD-00100D(AR)
B. ANSI-Y14.5M-1982
2. REWORK 11594841 INTO 12370474
AS SHOWN.
3. APPLY PROTECTIVE FINISH TO
REWORKED SURFACES PER
DWG 12369001.



REVISIONS	DATE	APPROVED
INITIAL RELEASE TAC P3751		

REWORK DRAWING

PART NO 12370474 AFTER REWORK

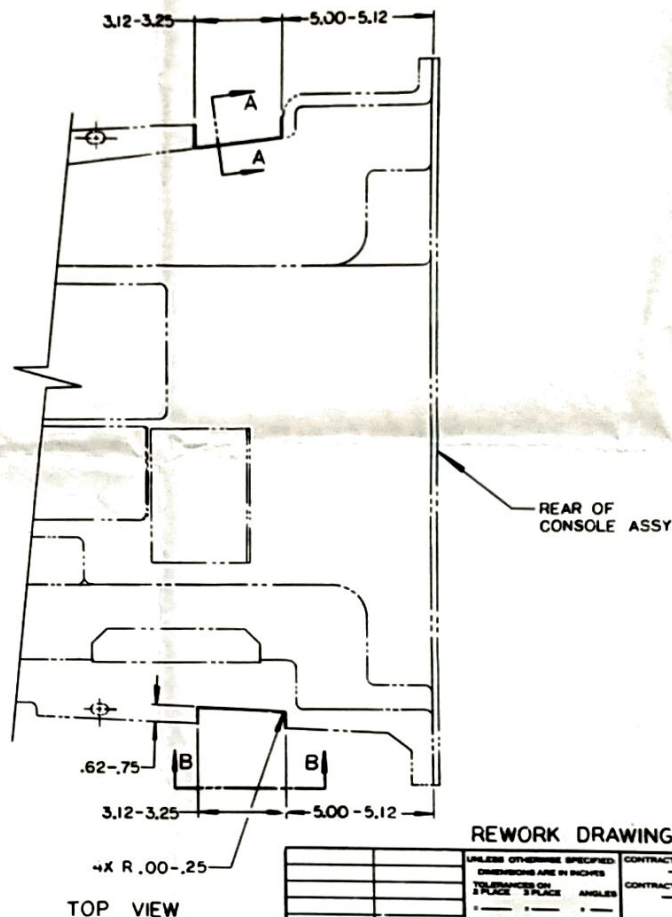
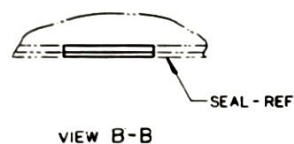
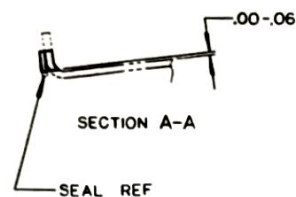
UNLESS OTHERWISE SPECIFIED DIMENSIONS ARE IN INCHES		CONTRACT NUMBER	U.S. ARMY TRK - AUTOMOTIVE COMMAND WARRICK, INDIAN 46087-0000
TOLERANCES FRACTIONAL DECIMAL ANGLES		CONTRACTOR	PANEL (WELDMENT)
M792		CHECKER	SEE 12-04-03
12370470 M561		DESIGNER	SEE 12-04-03
NEXT ASST	USED ON	DATE	SCALE 1/2 UNIT FT SHEET
APPLICATION	DESIGN APPROVAL	DATE	

Provided by WSUCougaRx

NOTES:

1. APPLICABLE STANDARDS/SPECIFICATIONS:
A. DOD-STD-00100D(AR)
B. ANSI-Y14.5M-1982
2. REWORK 11594951 INTO 12370473
AS SHOWN.
3. APPLY PROTECTIVE FINISH TO REWORKED
SURFACES PER DWG 12369014.

REVISIONS			
NO.	DATE	DESCRIPTION	APPROVED
INITIAL RELEASE TAC P3751			



REWORK DRAWING

PART NO. 12370473 AFTER REWORK

UNLESS OTHERWISE SPECIFIED: DIMENSIONS ARE IN INCHES TOLERANCES ON HOLE PLACES ANGLES		CONTRACT NUMBER CONTRACTOR	
DRAWING APPROVED DATE, ENGINEER 12370470 M561 NEXT ASSY USED ON APPLICATION		DRAWING APPROVED DATE, ENGINEER 12370473 SCALE 1/2 UNIT WT SHEET	
U.S. ARMY TANK - AUTOMOTIVE COMMAND WARREN, MICHIGAN 48097-0000		CONSOLE ASSY	
SIZE D 19207		PART NO. 12370473	

Provided by WSUCougaRx