

DESIGNATION	DESCRIPTION
A2	MALFUNCTION GROUP
A5	GOVERNOR CONTROL
A6	GOVERNOR ACTUATOR
A8	POWER CONVERTER
A9	REGULATOR, BATTERY CHARGING
B1	STARTER, ENGINE
BT1	BATTERY, 24V
B2, B3	FAN, VENTILATING
CB1	CIRCUIT BREAKER, DC CONTROL
CB3	GROUND FAULT CIRCUIT INTERRUPTER
CR1, CR2, CR3	DIODE, BLOCKING (BATT REV POLARITY)
CR4	RECTIFIER, FULL WAVE
DS6	INDICATOR, AC CIRCUIT INT CLOSED
E1	PUMP, AUX FUEL TRANSFER
E2	PUMP, ENGINE FUEL TRANSFER
EMI	FILTER, EMI
FU1	FUSE, BATTERY CHARGING REGULATOR
FL1	SWITCH, FLOAT, LOW FUEL SHUTDOWN
NOTE: THE NORMAL POSITION OF FL 1 APPLIES TO AN EMPTY TANK	
FL2A	SWITCH, FLOAT, AUX FUEL PUMP OFF
FL2B	SWITCH, FLOAT, AUX FUEL PUMP ON
G1	GENERATOR, 3KW
GND	GROUND STUD
H1, H2	HEATER, AIR
HT	SWITCH, ENGINE HIGH TEMP.
J1	CONVENIENCE RECEPTACLE (DUPLEX)
K1	A.C. CIRCUIT INTERRUPTER
K2	CONTACTOR, ENGINE START
K3	OVERVOLTAGE RELAY (P/O A8)
K6	SHORT CIRCUIT RELAY (P/O A8)
K8	OVERLOAD SHORT CIRCUIT RELAY (P/O A8)
K12	RELAY, FAULT LOCKOUT
K13	CONTACTOR, ENGINE PRE-HEAT
K14	RELAY, AUX FUEL TRANSFER
K15	RELAY, STARTER CUTOUT
L1, L2, N	LOAD TERMINAL
L4	SOLENOID, ENGINE STARTER (PART OF B1)
M1	VOLTMETER, AC (0-250V)
M2	KILOWATT METER
M3	METER, TOTAL TIME (TT)
M5	METER, FUEL LEVEL
MT5	FUEL LEVEL SENDER
OP	SWITCH, LOW OIL PRESSURE
R1	RHEOSTAT, VOLTAGE ADJUST
R6	RESISTOR, STARTER CUTOUT RELAY
RV1, RV2, RV3	SURGE ARRESTOR
S1	SWITCH, MASTER (STOP-RUN-START)
S5	SWITCH, A.C. CIRCUIT INTERRUPTER
S7	SWITCH, BATTLE SHORT
S17	SWITCH, AUX FUEL
S18	SWITCH, ENGINE PRE-HEAT SYSTEM
S19	SWITCH, EMERGENCY STOP
S20, S21	SWITCH, TEMPERATURE
SR1	SLAVE RECEPTACLE (NATO)
TB2	TERMINAL BOARD, OUTPUT LOAD
TB3	TERMINAL BOARD, DIAGNOSTIC TEST POINTS
TB4, TB5, TB6	TERMINAL BOARD
TVS1-TV6	TRANSIENT VOLTAGE SUPPRESSOR
CONNECTOR	DESCRIPTION
J4/P4	A2 (MALFUNCTION GROUP)
J5/P5	HT (SWITCH, ENG HIGH TEMP)
J6/P6	A9 (REG. BATTERY CHARGING)
J7/P7	CONTROL BOX CONNECTOR
J8/P8	FL2A/FL2B (FLOAT SWITCH)
J9/P9	E1 (PUMP)
J10/P10	A6 (GOVERNOR ACTUATOR)
J11/P11	FL1 (FLOAT SWITCH)
J12/P12	E2 (PUMP)
J13/P13	B2 (FAN)
J14/P14	B3 (FAN)
J15/P15	A8 (POWER CONVERTER)
J16/P16	
J17/P17	

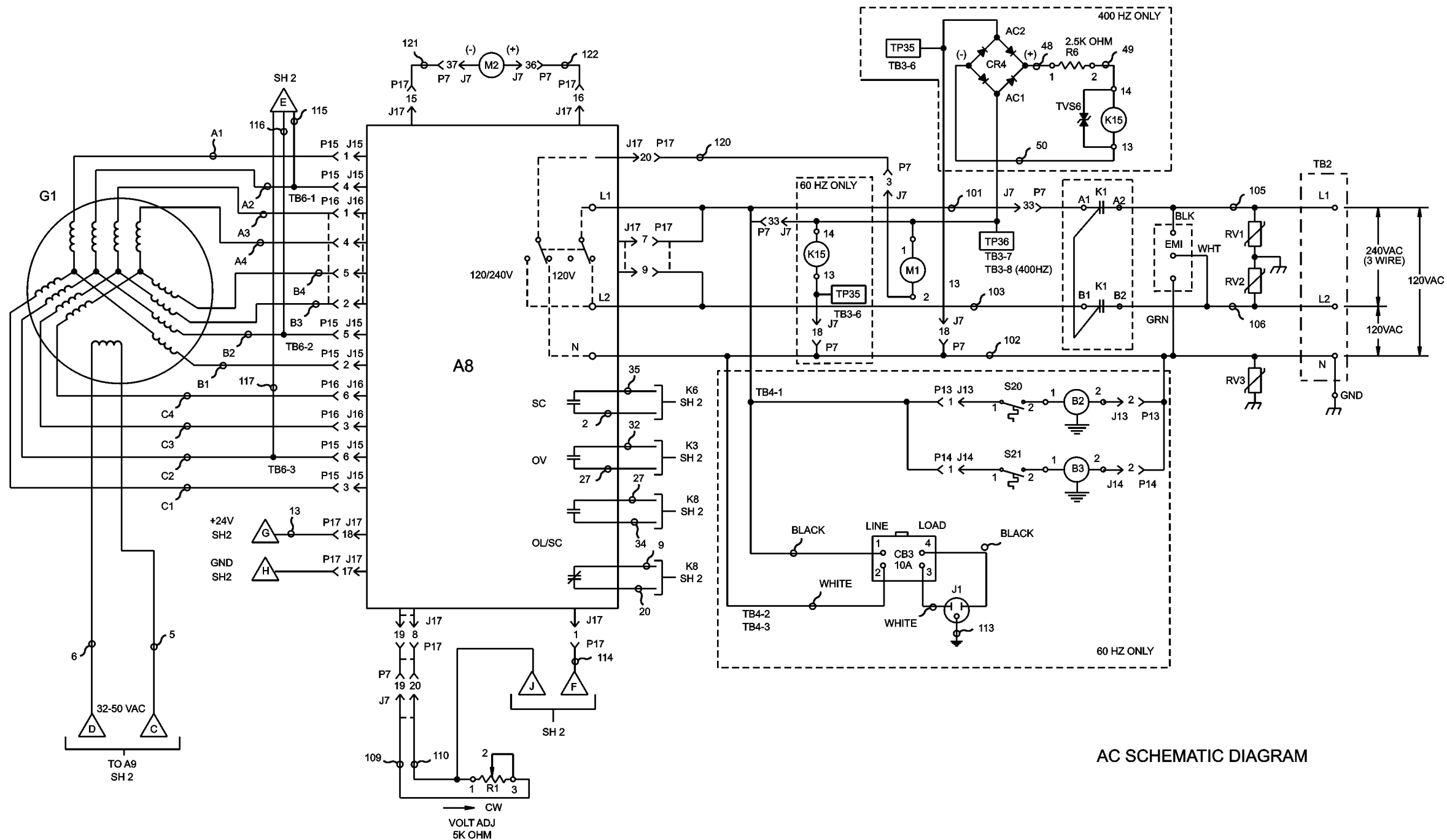


Figure FO-1. Generator Set Electrical Schematic (Sheet 1 of 2)

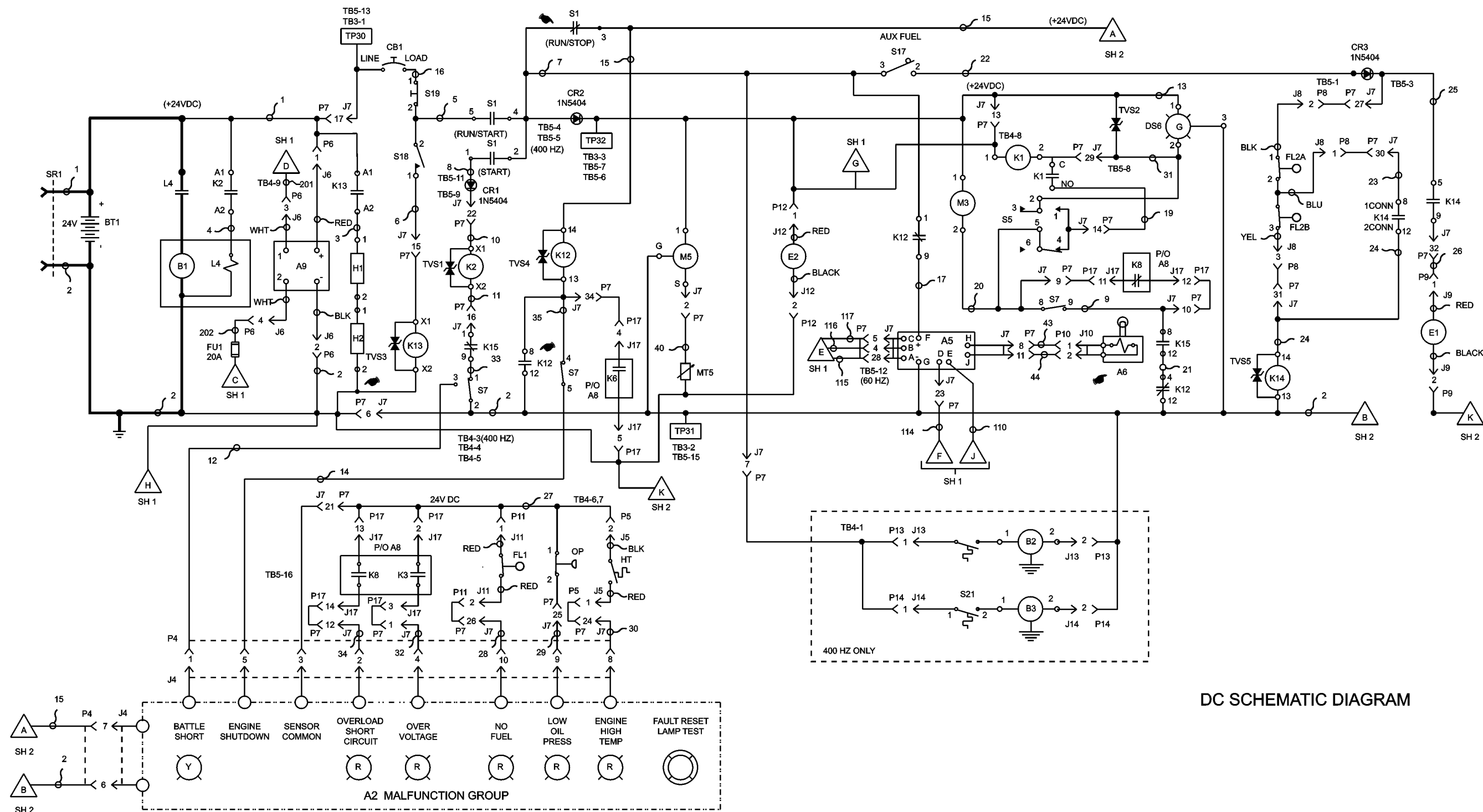
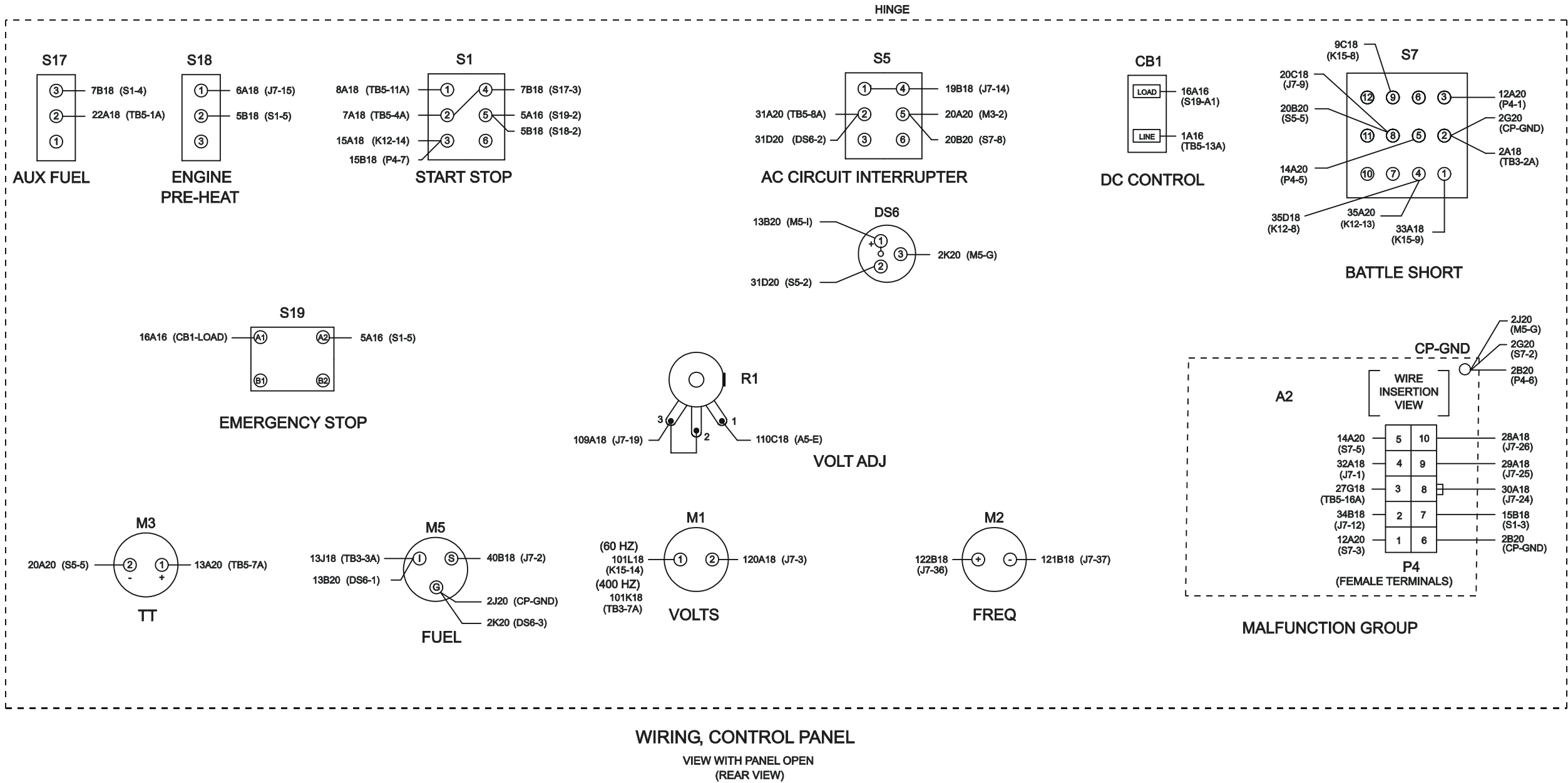


Figure FO-1. Generator Set Electrical Schematic (Sheet 2 of 2)



FO-2. Generator Set Wiring Diagram (Sheet 1 of 4)

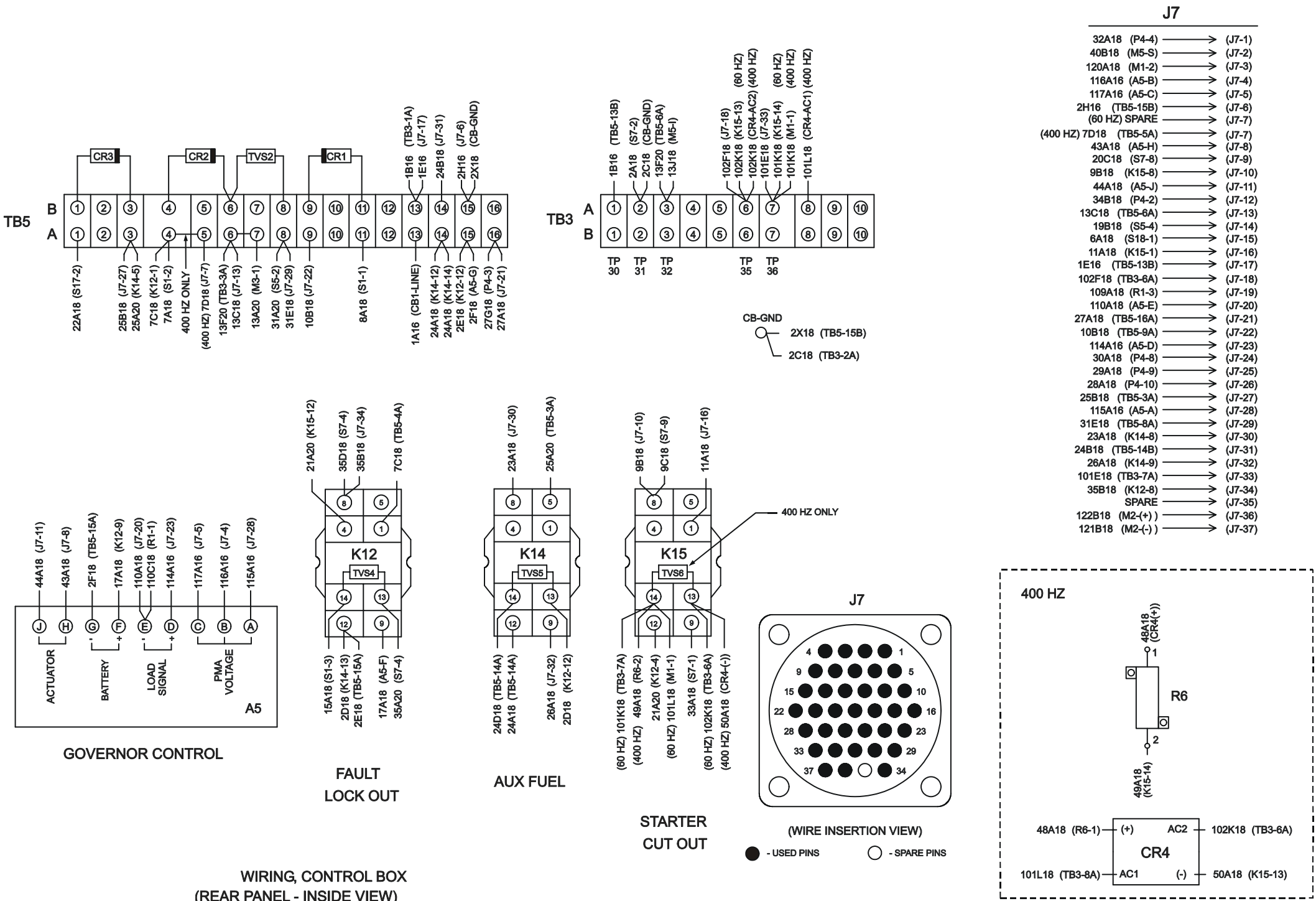


Figure FO-2. Generator Set Wiring Diagram (Sheet 2 of 4)

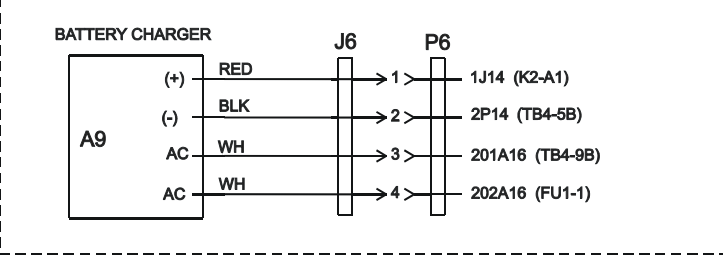


Figure FO-2. Generator Set Wiring Diagram (Sheet 3 of 4)

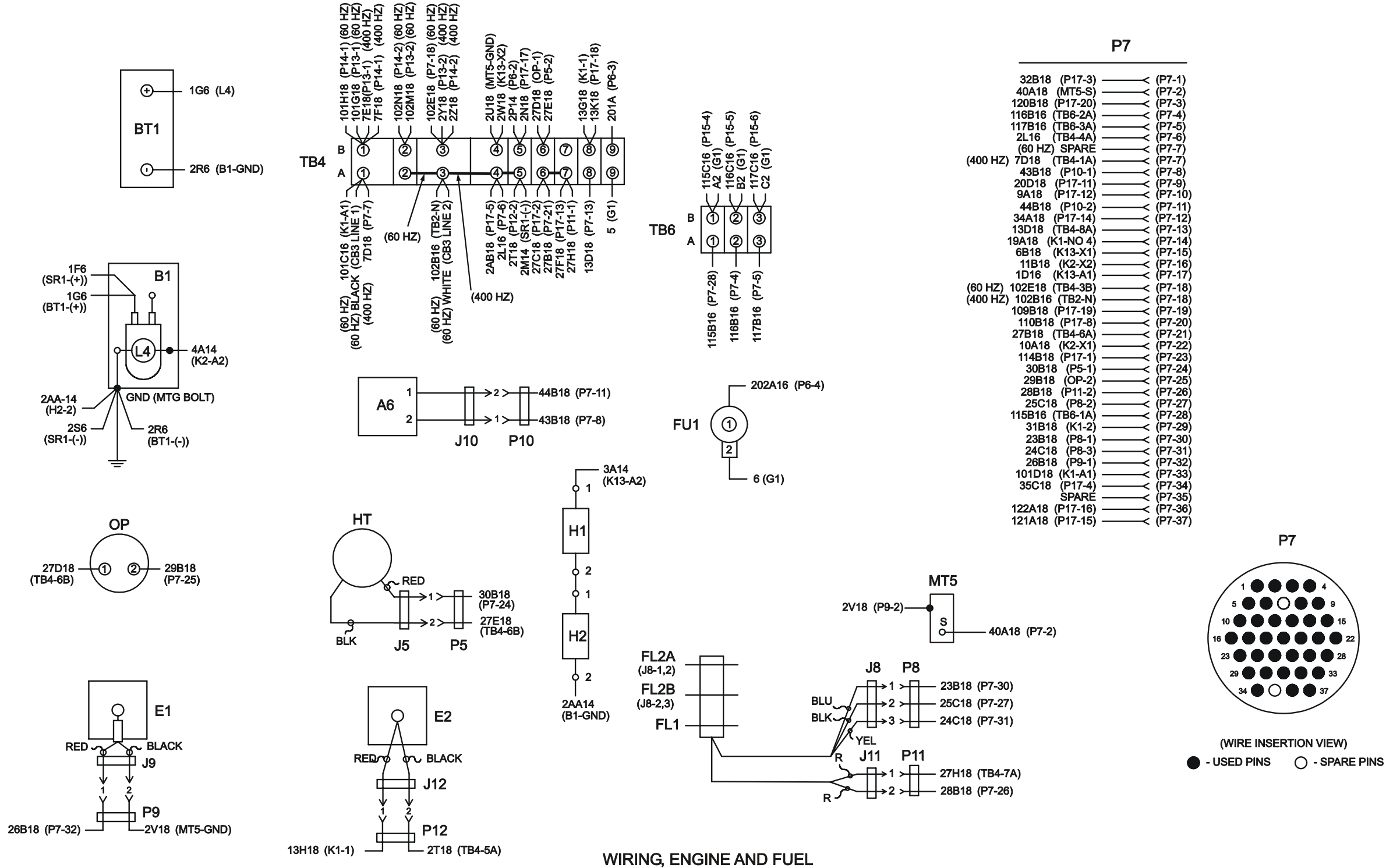
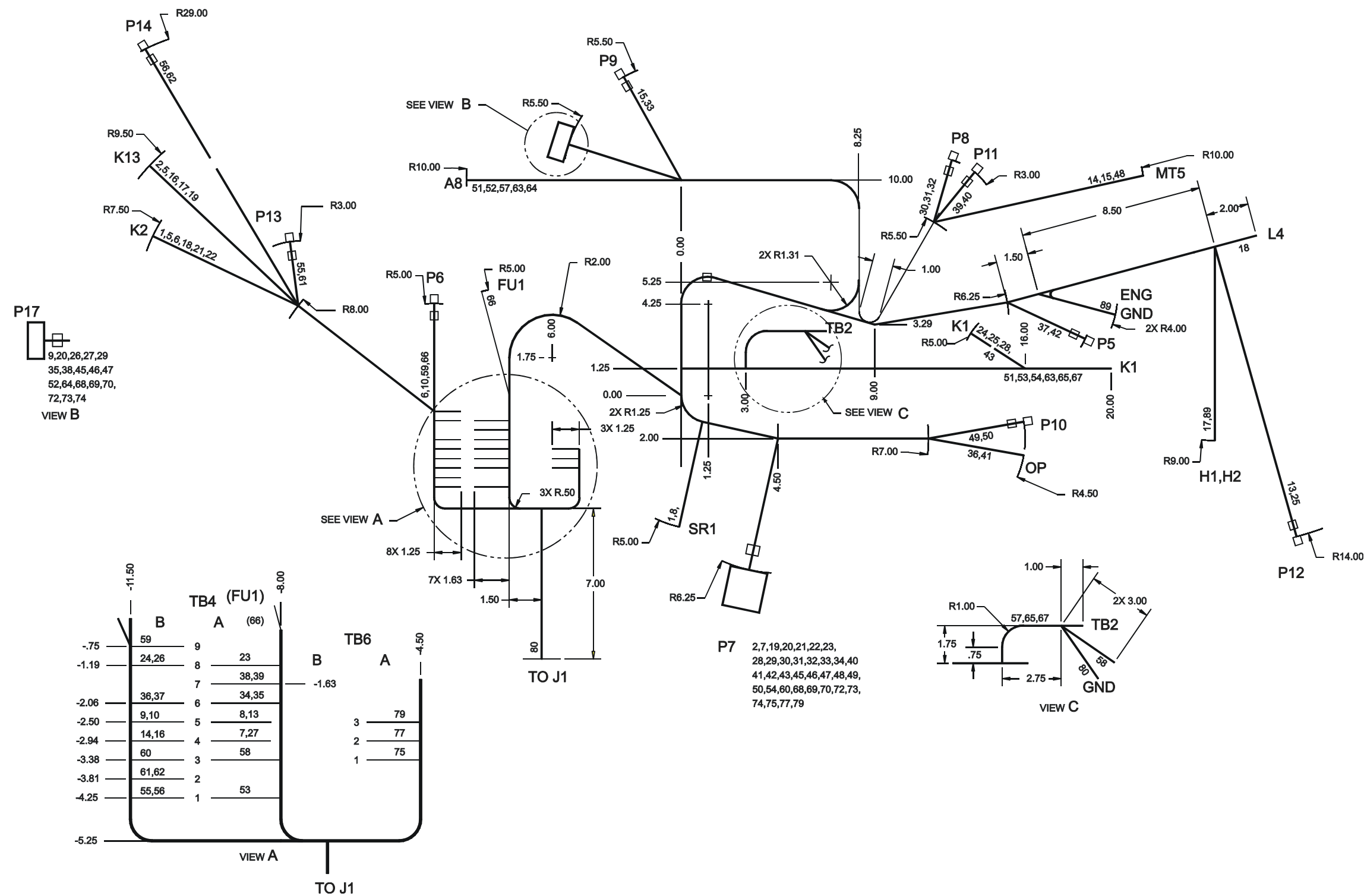


Figure FO-2. Generator Set Wiring Diagram (Sheet 4 of 4)



FO-3. Engine Wiring Harness Diagram, 60Hz (Sheet 1 of 2)

WIRE LIST TABLE								
WIRE REF NO	WIRE MARKING	FROM	TERMINAL FN	TO	TERMINAL FN	WIRE FN	MARKING COLOR	WIRE LENGTH
1	1C14	SR1-(+)	22	K2-A1	9	7	RED	50
2	1D16	P7-17	2	K13-A1	9	6	RED	57.5
3								
4								
5	1H14	K2-A1	9	K13-A1	9	7	RED	16
6	1J14	P6-1	15	K2-A1	9	7	RED	20.5
7	2L16	P7-6	2	TB4-4A	26	6	RED	31
8	2M14	SR1-(-)	22	TB4-5A	26	7	RED	34
9	2N18	P17-17	34	TB4-5B	27	5	RED	58
10	2P14	P6-2	15	TB4-5B	26	7	RED	8.5
11								
12								
13	2T18	P12-2	15	TB4-5A	27	5	RED	59
14	2U18	MT5-GND	13	TB4-4B	27	5	RED	54
15	2V18	P9-2	15	MT5-GND	13	5	RED	36
16	2W18	K13-X2	30	TB4-4B	27	5	RED	21.5
17	3A14	H1-1	31	K13-A2	9	7	RED	84
18	4A14	K2-A2	9	L4	21	7	RED	73
19	6B18	P7-15	2	K13-X1	30	5	RED	57.5
20	9A18	P7-10	2	P17-12	34	5	RED	46
21	10A18	P7-22	2	K2-X1	30	5	RED	55.5
22	11B18	P7-16	2	K2-X2	30	5	RED	55.5
23	13D18	P7-13	2	TB4-8A	27	5	RED	29
24	13G18	K1-1	18	TB4-8B	27	5	RED	48
25	13H18	K1-1	18	P12-1	15	5	RED	62
26	13K18	TB4-8B	27	P17-18	34	5	RED	59
27	2AB18	P17-5	34	TB4-4A	27	5	RED	50
28	19A18	P7-14	2	K1-NO4	18	5	RED	35
29	20D18	P7-9	2	P17-11	34	5	RED	46
30	23B18	P7-30	2	P8-1	15	5	RED	35
31	24C18	P7-31	2	P8-3	15	5	RED	35
32	25C18	P7-27	2	P8-2	15	5	RED	35
33	26B18	P7-32	2	P9-1	15	5	RED	46
34	27B18	P7-21	2	TB4-6A	27	5	RED	30
35	27C18	P17-2	34	TB4-6A	27	5	RED	49
36	27D18	OP-1	19	TB4-6B	27	5	RED	43
37	27E18	P5-2	15	TB4-6B	27	5	RED	51
38	27F18	P17-13	34	TB4-7A	27	5	RED	48.5
39	27H18	P11-1	15	TB4-7A	27	5	RED	38.5
40	28B18	P7-26	2	P11-2	15	5	RED	35
41	29B18	P7-25	2	OP-2	19	5	RED	20
42	30B18	P7-24	2	P5-1	15	5	RED	38
43	31B18	P7-29	2	K1-2	18	5	RED	35
44								
45	32B18	P7-1	2	P17-3	34	5	RED	46
46	34A18	P7-12	2	P17-14	34	5	RED	46
47	35C18	P7-34	2	P17-4	34	5	RED	46
48	40A18	P7-2	2	MT5-S	13	5	RED	44
49	43B18	P7-8	2	P10-1	15	5	RED	20
50	44B18	P7-11	2	P10-2	15	5	RED	20
51	101A10	A8-L1	20	K1-A1	8	4	BLK	56
52	101B18	A8-L1	19	P17-7	34	5	BLK	15.5
53	101C16	TB4-1A	26	K1-A1	9	6	BLK	40
54	101D18	P7-33	2	K1-A1	10	5	BLK	33.5
55	101G18	TB4-1B	27	P13-1	15	5	BLK	16.5
56	101H18	TB4-1B	27	P14-1	15	5	BLK	41.5

CONTINUED								
WIRE REF NO	WIRE MARKING	FROM	TERMINAL FN	TO	TERMINAL FN	WIRE FN	MARKING COLOR	WIRE LENGTH
57	102A10	TB2-N	8	A8-N	20	4	BLK	43
58	102B16	TB4-3A	26	TB2-N	9	6	BLK	27.5
59	201A16	P6-3	15	TB4-9B	26	6	BLK	7.0
60	102E18	P7-18	2	TB4-3B	27	5	BLK	38
61	102M18	TB4-2B	27	P13-2	15	5	BLK	16
62	102N18	TB4-2B	27	P14-2	15	5	BLK	41
63	103A10	A8-L2	20	K1-B1	8	4	BLK	56
64	103B18	A8-L2	19	P17-9	34	5	BLK	15.5
65	105A10	TB2-L1	8	K1-A2	8	4	BLK	22
66	202A16	P6-4	15	FU1-1	12	6	BLK	21.5
67	106A10	TB2-L2	8	K1-B2	8	4	BLK	22
68	122A18	P7-36	2	P17-16	34	5	BLK	46
69	109B18	P7-19	2	P17-19	34	5	BLK	46
70	110B18	P7-20	2	P17-8	34	5	BLK	46
71								
72	120B18	P7-3	2	P17-20	34	5	BLK	46
73	121A18	P7-37	2	P17-15	34	5	BLK	46
74	114B18	P7-23	2	P17-1	34	5	BLK	46
75	115B16	P7-28	2	TB6-1A	26	6	BLK	38
76								
77	116B16	P7-4	2	TB6-2A	26	6	BLK	38.5
78								
79	117B16	P7-5	2	TB6-3A	26	6	BLK	39
80	113A14	J1-3	32	GND	9	7	BLK	37
81								
82								
83								
84								
85								
86		SR1-(-)	23	GND	8	4		8
87								
88		H1-2	31	H2-1	31	7		2
89	2AA14	H2-2	31	B1-GND	31	7	BLK	21

Figure FO-3. Engine Wiring Harness Diagram, 60Hz (Sheet 2 of 2)

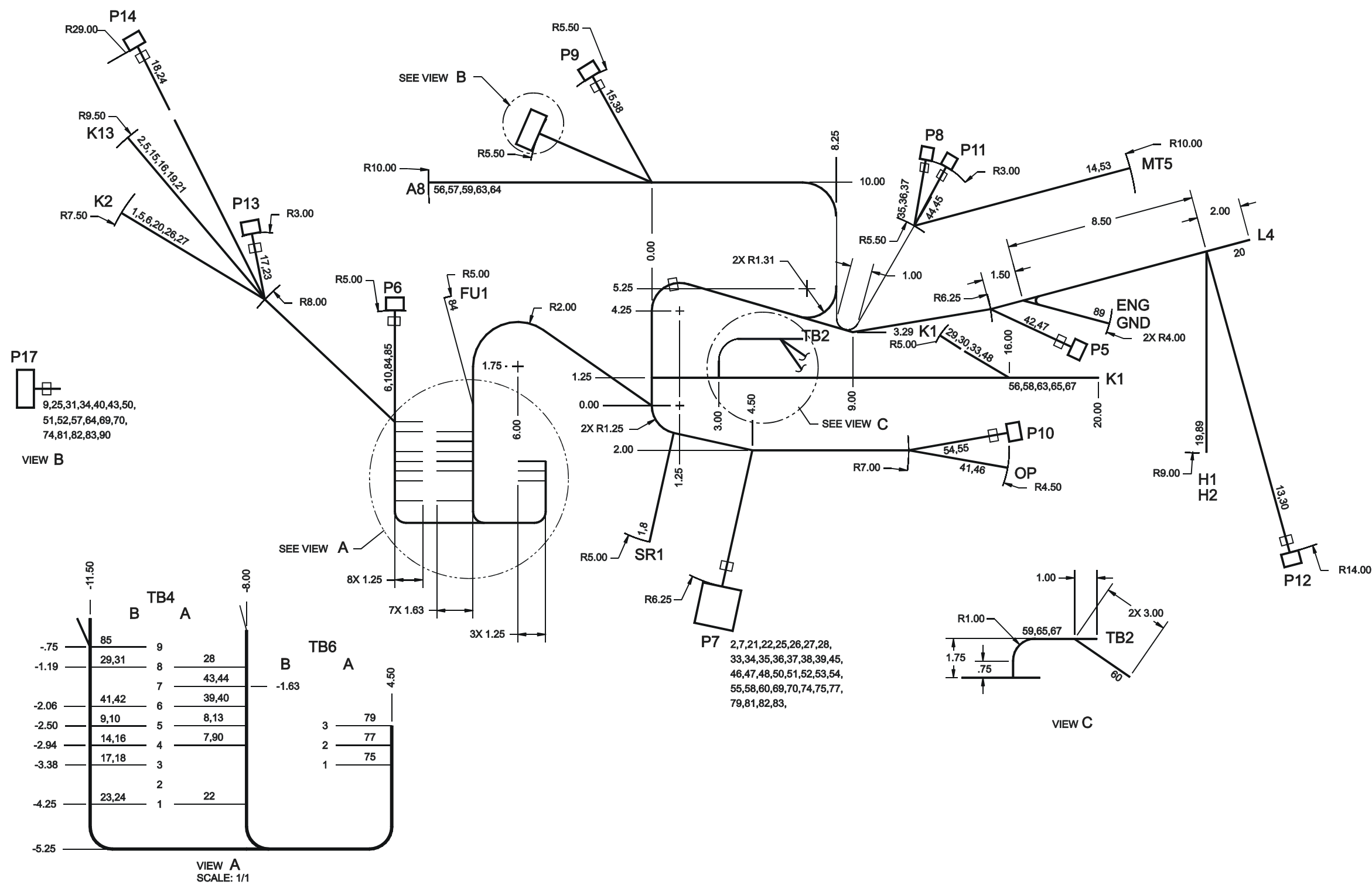


Figure FO-4. Engine Wiring Harness Diagram, 400Hz (Sheet 1 of 2)

WIRE LIST TABLE								
WIRE REF NO	WIRE MARKING	FROM	TERMINAL FN	TO	TERMINAL FN	WIRE FN	MARKING COLOR	WIRE LENGTH
1	1C14	SR1-(+)	22	K2-A1	9	7	RED	50
2	1D16	P7-17	2	K13-A1	9	6	RED	57.5
3								
4								
5	1H14	K2-A1	9	K13-A1	9	7	RED	16
6	1J14	P6-1	15	K2-A1	9	7	RED	20.5
7	2L16	P7-6	2	TB4-4A	26	6	RED	31
8	2M14	SR1-(-)	22	TB4-5A	26	7	RED	34
9	2N18	P17-17	34	TB4-5B	27	5	RED	58
10	2P14	P6-2	15	TB4-5B	26	7	RED	8.5
11								
12								
13	2T18	P12-2	15	TB4-5A	27	5	RED	59
14	2U18	MT5-GND	13	TB4-4B	27	5	RED	54
15	2V18	P9-2	15	MTG-GND	13	5	RED	36
16	2W18	K13-X2	30	TB4-4B	27	5	RED	21.5
17	2Y18	TB4-3B	27	P13-2	15	5	RED	15.5
18	2Z18	TB4-3B	27	P14-2	15	5	RED	40.5
19	3A14	H1-1	31	K13-A2	9	7	RED	84
20	4A14	K2-A2	9	L4	21	7	RED	73
21	6B18	P7-15	2	K13-X1	30	5	RED	57.5
22	7D18	P7-7	2	TB4-1A	27	5	RED	32.5
23	7E18	TB4-1B	27	P13-1	15	5	RED	16.5
24	7F18	TB4-1B	27	P14-1	15	5	RED	41.5
25	9A18	P7-10	2	P17-12	34	5	RED	46
26	10A18	P7-22	2	K2-X1	30	5	RED	55.5
27	11B18	P7-16	2	K2-X2	30	5	RED	55.5
28	13D18	P7-13	2	TB4-8A	27	5	RED	29
29	13G18	K1-1	18	TB4-8B	27	5	RED	48
30	13H18	K1-1	18	P12-1	15	5	RED	62
31	13K18	TB4-8B	27	P17-18	34	5	RED	59
32								
33	19A18	P7-14	2	K1-NO4	18	5	RED	35
34	20D18	P7-9	2	P17-11	34	5	RED	46
35	23B18	P7-30	2	P8-1	15	5	RED	35
36	24C18	P7-31	2	P8-3	15	5	RED	35
37	25C18	P7-27	2	P8-2	15	5	RED	35
38	26B18	P7-32	2	P9-1	15	5	RED	46
39	27B18	P7-21	2	TB4-6A	27	5	RED	30
40	27C18	TB4-6A	27	P17-2	34	5	RED	49
41	27D18	OP-1	19	TB4-6B	27	5	RED	43
42	27E18	TB4-6B	27	P5-2	15	5	RED	51
43	27F18	TB4-7A	27	P17-13	34	5	RED	48.5
44	27H18	TB4-7A	27	P11-1	15	5	RED	38.5
45	28B18	P7-26	2	P11-2	15	5	RED	35
46	29B18	P7-25	2	OP-2	19	5	RED	20
47	30B18	P7-24	2	P5-1	15	5	RED	38
48	31B18	P7-29	2	K1-2	18	5	RED	35
49								
50	32B18	P7-1	2	P17-3	34	5	RED	46
51	34A18	P7-12	2	P17-14	34	5	RED	46
52	35C18	P7-34	2	P17-4	34	5	RED	46
53	40A18	P7-2	2	MT5-S	13	5	RED	44
54	43B18	P7-8	2	P10-1	15	5	RED	20
55	44B18	P7-11	2	P10-2	15	5	RED	20
56	101A10	A8-L1	20	K1-A1	8	4	BLK	56

CONTINUED								
WIRE REF NO	WIRE MARKING	FROM	TERMINAL FN	TO	TERMINAL FN	WIRE FN	MARKING COLOR	WIRE LENGTH
57	101B18	A8-L1	19	P17-7	34	5	BLK	15.5
58	101D18	P7-33	2	K1-A1	10	5	BLK	33.5
59	102A10	TB2-N	8	A8-N	20	4	BLK	43
60	102B16	P7-18	2	TB2-N	9	6	BLK	23.5
61								
62								
63	103A10	A8-L2	20	K1-B1	8	4	BLK	56
64	103B18	A8-L2	19	P17-9	34	5	BLK	15.5
65	105A10	TB2-L1	8	K1-A2	8	4	BLK	22
66								
67	106A10	TB2-L2	8	K1-B2	8	4	BLK	22
68								
69	109B18	P7-19	2	P17-19	34	5	BLK	46
70	110B18	P7-20	2	P17-8	34	5	BLK	46
71								
72								
73								
74	114B18	P7-23	2	P17-1	34	5	BLK	46
75	115B16	P7-28	2	TB6-1A	26	6	BLK	38
76								
77	116B16	P7-4	2	TB6-2A	26	6	BLK	38.5
78								
79	117B16	P7-5	2	TB6-3A	26	6	BLK	39
80								
81	120B18	P7-3	2	P17-20	34	5	BLK	46
82	121A18	P7-37	2	P17-15	34	5	BLK	46
83	122A18	P7-36	2	P17-16	34	5	BLK	46
84	202A16	P6-4	15	FU1-1	12	6	BLK	21.5
85	201A16	P6-3	15	TB4-9B	26	6	BLK	7.0
86		SR1-(-)	23	GND	8	4		
87								
88		H1-2	31	H2-1	31	7		
89	2AA14	H2-2	31	B1-GND	31	7	BLK	21
90	2AB18	P17-5	34	TB4-4A	27	5	RED	50

Figure FO-4. Engine Wiring Harness Diagram, 400Hz (Sheet 2 of 2)

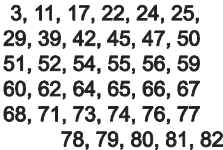


Figure FO-5. Control Box Wiring Harness Diagram, 60Hz (Sheet 1 of 3)

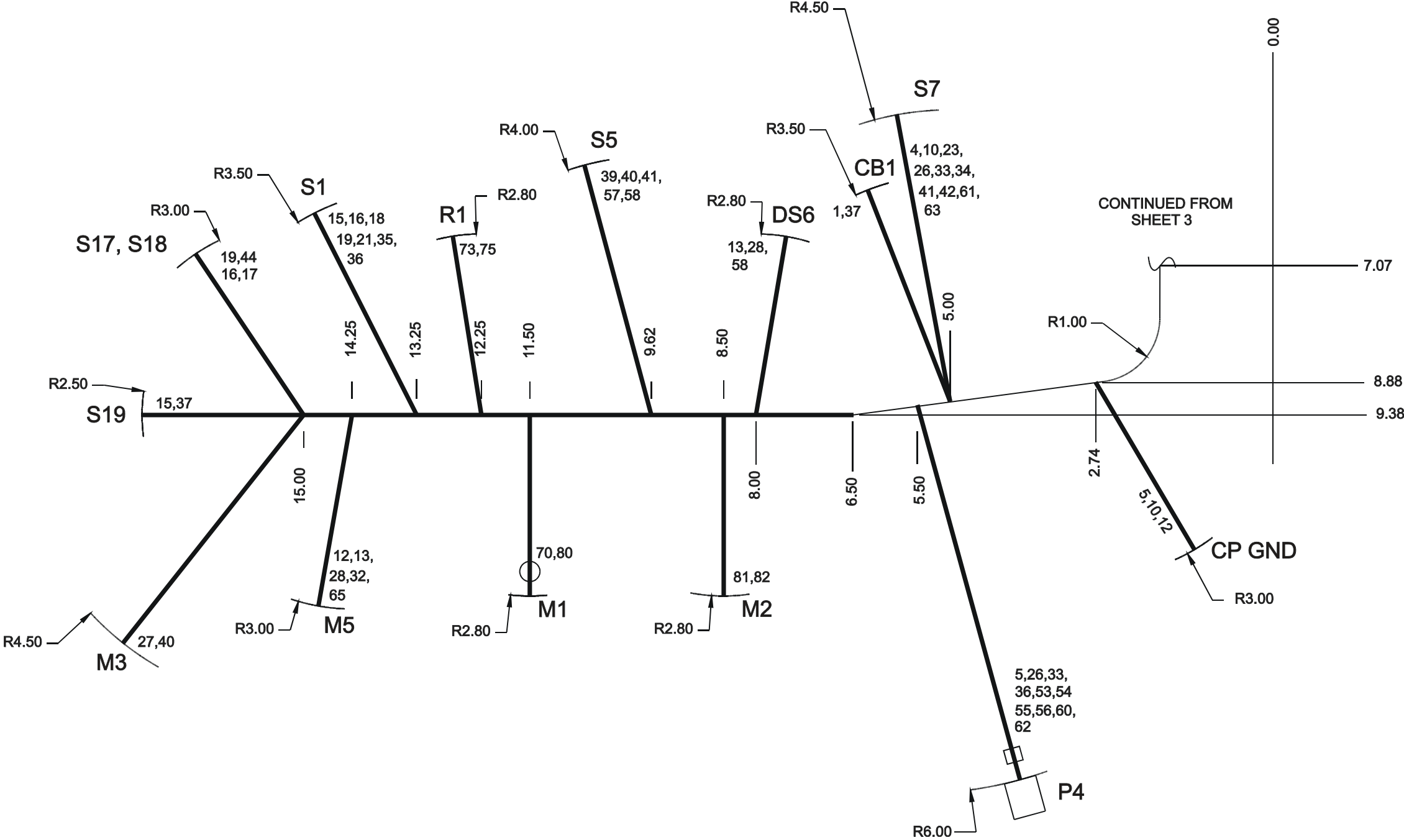


Figure FO-5. Control Box Wiring Harness Diagram, 60Hz (Sheet 2 of 3)

WIRE LIST TABLE

WIRE REF NO	WIRE MARKING	FROM	TERMINAL FN	TO	TERMINAL FN	WIRE FN	MARKING COLOR	WIRE LENGTH
1	1A16	TB5-13A	7	CB1-LINE	8	3	RED	26.5
2	1B16	TB5-13B	7	TB3-1A	7	3	RED	8.0
3	1E16	J7-17	2	TB5-13B	7	3	RED	23.5
4	2A18	TB3-2A	6	S7-2	6	4	RED	32.0
5	2B20	CP-GND	10	P4-6	13	5	RED	12.8
6	2C18	TB3-2A	6	CB-GND	10	4	RED	14.3
7	2D18	K14-13	6	K12-12	6	4	RED	6.0
8	2E18	K12-12	6	TB5-15A	6	4	RED	10.3
9	2F18	A5-G	6	TB5-15A	6	4	RED	6.5
10	2G20	CP-GND	10	S7-2	6	5	RED	11.0
11	2H16	J7-6	2	TB5-15B	7	3	RED	22.0
12	2J20	M5-G	10	CP-GND	10	5	RED	18.5
13	2K20	M5-G	10	DS6-3	TIN	5	RED	12.0
14	2X18	CB-GND	10	TB5-15B	6	4	RED	13.5
15	5A16	S1-5	7	S19-2	7	3	RED	11.0
16	5B18	S1-5	6	S18-2	6	4	RED	7.3
17	6A18	J7-15	2	S18-1	6	4	RED	32.0
18	7A18	S1-2	6	TB5-4A	6	4	RED	39.5
19	7B18	S1-4	6	S17-3	6	4	RED	8.5
20	7C18	K12-1	6	TB5-4A	6	4	RED	8.0
21	8A18	S1-1	6	TB5-11A	6	4	RED	37.3
22	9B18	J7-10	2	K15-8	6	4	RED	15.5
23	9C18	S7-9	6	K15-8	6	4	RED	24.8
24	10B18	J7-22	2	TB5-9A	6	4	RED	20.5
25	11A18	J7-16	2	K15-1	6	4	RED	15.3
26	12A20	S7-3	6	P4-1	13	5	RED	10.8
27	13A20	TB5-7A	6	M3-1	9	5	RED	41.5
28	13B20	M5-I	10	DS6-1	TIN	5	RED	12.0
29	13C18	TB5-6A	6	J7-13	2	4	RED	22.0
30								
31	13F20	TB5-6A	6	TB3-3A	6	5	RED	14.3
32	13J18	TB3-3A	6	M5-I	10	4	RED	39.5
33	14A20	S7-5	6	P4-5	13	5	RED	10.5
34	35D18	K12-8	6	S7-4	6	4	RED	29.5
35	15A18	K12-14	6	S1-3	6	4	RED	40.0
36	15B18	S1-3	6	P4-7	13	4	RED	16.8
37	16A16	S19-1	7	CB1-LOAD	8	3	RED	14.5
38	17A18	K12-9	6	A5-F	6	4	RED	14.0
39	19B18	J7-14	2	S5-4	6	4	RED	28.0
40	20A20	M3-2	9	S5-5	6	5	RED	13.3
41	20B20	S5-5	6	S7-8	6	5	RED	11.8
42	20C18	S7-8	6	J7-9	2	4	RED	23.8
43	21A20	K15-12	6	K12-4	6	5	RED	13.0
44	22A18	S17-2	6	TB5-1A	6	4	RED	43.0
45	23A18	K14-8	6	J7-30	2	4	RED	16.5
46	24A18	K14-12	6	TB5-14A	6	4	RED	10.0
47	24B18	TB5-14B	6	J7-31	2	4	RED	23.0

WIRE LIST TABLE (CONTINUED)

WIRE REF NO	WIRE MARKING	FROM	TERMINAL FN	TO	TERMINAL FN	WIRE FN	MARKING COLOR	WIRE LENGTH
48	24D18	K14-14	6	TB5-14A	6	4	RED	10.3
49	25A20	TB5-3A	6	K14-5	6	5	RED	10.5
50	25B18	TB5-3A	6	J7-27	2	4	RED	24.3
51	26A18	K14-9	6	J7-32	2	4	RED	24.0
52	27A18	TB5-16A	6	J7-21	2	4	RED	18.5
53	27G18	TB5-16A	6	P4-3	13	4	RED	30.0
54	28A18	J7-26	2	P4-10	13	4	RED	26.3
55	29A18	P4-9	13	J7-25	2	4	RED	26.3
56	30A18	P4-8	13	J7-24	2	4	RED	26.3
57	31A20	TB5-8A	6	S5-2	6	5	RED	35.5
58	31D20	S5-2	6	DS6-2	TIN	5	RED	8.8
59	31E18	J7-29	2	TB5-8A	6	4	RED	21.5
60	32A18	J7-1	2	P4-4	13	4	RED	26.3
61	33A18	S7-1	6	K15-9	6	4	RED	34.5
62	34B18	J7-12	2	P4-2	13	4	RED	26.3
63	35A20	S7-4	6	K12-13	6	5	RED	33.0
64	35B18	K12-8	6	J7-34	2	4	RED	20.0
65	40B18	M5-S	10	J7-2	2	4	RED	31.5
66	43A18	A5-H	6	J7-8	2	4	RED	23.5
67	44A18	A5-J	6	J7-11	2	4	RED	24.0
68	101E18	TB3-7A	6	J7-33	2	4	BLK	24.9
69	101K18	TB3-7A	6	K15-14	6	4	BLK	19.0
70	101L18	K15-14	6	M1-1	11	4	BLK	40.0
71	102F18	J7-18	2	TB3-6A	6	4	BLK	24.5
72	102K18	TB3-6A	6	K15-13	6	4	BLK	19.0
73	109A18	R1-3	TIN	J7-19	2	4	BLK	29.0
74	110A18	A5-E	6	J7-20	2	4	BLK	22.0
75	110C18	A5-E	6	R1-1	TIN	4	BLK	37.0
76	114A16	A5-D	7	J7-23	2	3	BLK	22.0
77	115A16	A5-A	7	J7-28	2	3	BLK	20.5
78	116A16	A5-B	7	J7-4	2	3	BLK	21.0
79	117A16	A5-C	7	J7-5	2	3	BLK	21.5
80	120A18	M1-2	11	J7-3	2	4	BLK	29.0
81	121B18	J7-37	2	M2-(-)	11	4	BLK	25.3
82	122B18	J7-36	2	M2-(+)	11	4	BLK	25.3
83		S1-2	6	S1-4	6	4		4.3
84		S5-1	6	S5-4	6	4		1.3
85								
86		R1-2	TIN	R1-3	TIN	4		4.0

Figure FO-5. Control Box Wiring Harness Diagram, 60Hz (Sheet 3 of 3)

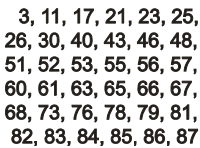


Figure FO-6. Control Box Wiring Harness Diagram, 400Hz (Sheet 1 of 3)

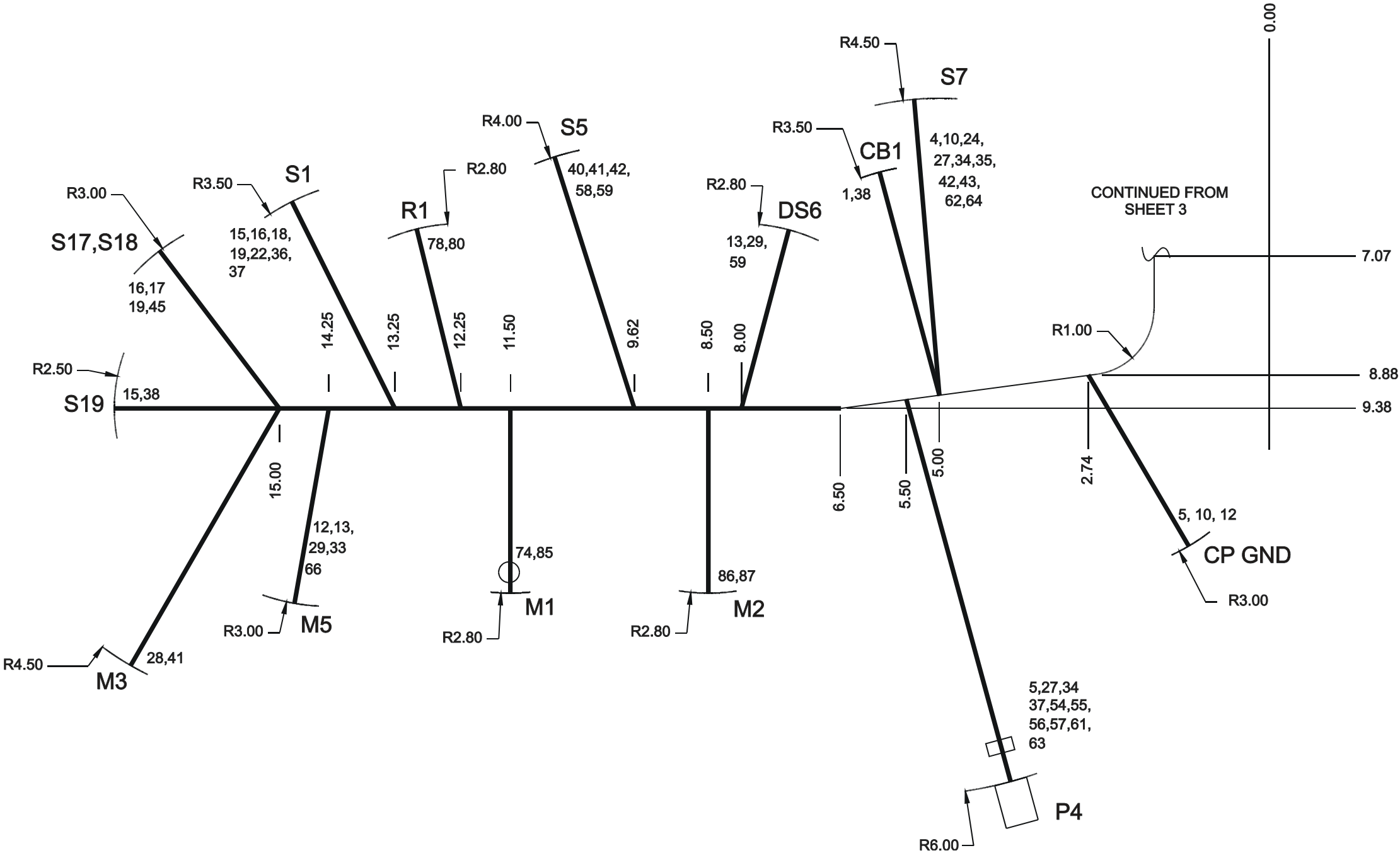


Figure FO-6. Control Box Wiring Harness Diagram, 400Hz (Sheet 2 of 3)

WIRE LIST TABLE								
WIRE REF NO	WIRE MARKING	FROM	TERMINAL FN	TO	TERMINAL FN	WIRE FN	MARKING COLOR	WIRE LENGTH
1	1A16	TB5-13A	7	CB1-LINE	8	3	RED	26.5
2	1B16	TB5-13B	7	TB3-1A	7	3	RED	8.0
3	1E16	J7-17	2	TB5-13B	7	3	RED	23.5
4	2A18	TB3-2A	6	S7-2	6	4	RED	32.0
5	2B20	CP-GND	10	P4-6	13	5	RED	12.8
6	2C18	TB3-2A	6	CB-GND	10	4	RED	14.3
7	2D18	K14-13	6	K12-12	6	4	RED	6.0
8	2E18	K12-12	6	TB5-15A	6	4	RED	10.3
9	2F18	A5-G	6	TB5-15A	6	4	RED	6.5
10	2G20	CP-GND	10	S7-2	6	5	RED	11.0
11	2H16	J7-6	2	TB5-15B	7	3	RED	22.0
12	2J20	M5-G	10	CP-GND	10	5	RED	18.5
13	2K20	M5-G	10	DS6-3	TIN	5	RED	12.0
14	2X18	CB-GND	10	TB5-15B	6	4	RED	13.5
15	5A16	S1-5	7	S19-2	7	3	RED	11.0
16	5B18	S1-5	6	S18-2	6	4	RED	7.3
17	6A18	J7-15	2	S18-1	6	4	RED	32.0
18	7A18	S1-2	6	TB5-4A	6	4	RED	39.5
19	7B18	S1-4	6	S17-3	6	4	RED	8.5
20	7C18	TB5-4A	6	K12-1	6	4	RED	8.0
21	7D18	TB5-5A	6	J7-7	2	4	RED	22.0
22	8A18	S1-1	6	TB5-11A	6	4	RED	37.3
23	9B18	J7-10	2	K15-8	6	4	RED	15.5
24	9C18	S7-9	6	K15-8	6	4	RED	24.8
25	10B18	J7-22	2	TB5-9A	6	4	RED	20.5
26	11A18	J7-16	2	K15-1	6	4	RED	15.3
27	12A20	S7-3	6	P4-1	13	5	RED	10.8
28	13A20	TB5-7A	6	M3-1	9	5	RED	41.5
29	13B20	M5-I	10	DS6-1	TIN	5	RED	12.0
30	13C18	TB5-6A	6	J7-13	2	4	RED	22.0
31								
32	13F20	TB5-6A	6	TB3-3A	6	5	RED	14.3
33	13J18	TB3-3A	6	M5-I	10	4	RED	39.5
34	14A20	S7-5	6	P4-5	13	5	RED	10.5
35	35D18	K12-8	6	S7-4	6	4	RED	29.5
36	15A18	K12-14	6	S1-3	6	4	RED	40.0
37	15B18	S1-3	6	P4-7	13	4	RED	16.8
38	16A16	S19-1	7	CB1-LOAD	8	3	RED	14.5
39	17A18	K12-9	6	A5-F	6	4	RED	14.0
40	19B18	J7-14	2	S5-4	6	4	RED	28.0
41	20A20	M3-2	9	S5-5	6	5	RED	13.3
42	20B20	S5-5	6	S7-8	6	5	RED	11.8
43	20C18	S7-8	6	J7-9	2	4	RED	23.8
44	21A20	K15-12	6	K12-4	6	5	RED	13.0
45	22A18	S17-2	6	TB5-1A	6	4	RED	43.0
46	23A18	K14-8	6	J7-30	2	4	RED	16.5
47	24A18	K14-12	6	TB5-14A	6	4	RED	10.4
48	24B18	TB5-14B	6	J7-31	2	4	RED	23.0
49	24D18	K14-14	6	TB5-14A	6	4	RED	10.3

WIRE LIST TABLE (CONTINUED)								
WIRE REF NO	WIRE MARKING	FROM	TERMINAL FN	TO	TERMINAL FN	WIRE FN	MARKING COLOR	WIRE LENGTH
50	25A20	TB5-3A	6	K14-5	6	5	RED	10.5
51	25B18	TB5-3A	6	J7-27	2	4	RED	24.3
52	26A18	K14-9	6	J7-32	2	4	RED	24.0
53	27A18	TB5-16A	6	J7-21	2	4	RED	18.5
54	27G18	TB5-16A	6	P4-3	13	4	RED	30.0
55	28A18	J7-26	2	P4-10	13	4	RED	26.3
56	29A18	P4-9	13	J7-25	2	4	RED	26.3
57	30A18	P4-8	13	J7-24	2	4	RED	26.3
58	31A20	TB5-8A	6	S5-2	6	5	RED	35.5
59	31D20	S5-2	6	DS6-2	TIN	5	RED	8.8
60	31E18	J7-29	2	TB5-8A	6	4	RED	21.5
61	32A18	J7-1	2	P4-4	13	4	RED	26.3
62	33A18	S7-1	6	K15-9	6	4	RED	34.5
63	34B18	J7-12	2	P4-2	13	4	RED	26.3
64	35A20	S7-4	6	K12-13	6	5	RED	33.0
65	35B18	K12-8	6	J7-34	2	4	RED	20.0
66	40B18	M5-S	10	J7-2	2	4	RED	31.5
67	43A18	A5-H	6	J7-8	2	4	RED	23.5
68	44A18	A5-J	6	J7-11	2	4	RED	24.0
69								
70	48A18	CR4-(+)	9	R6-1	TIN	4	RED	9.0
71	49A18	R6-2	TIN	K15-14	6	4	RED	32.1
72	50A18	CR4-(-)	9	K15-13	6	4	RED	32.1
73	101E18	TB3-7A	6	J7-33	2	4	BLK	24.9
74	101K18	TB3-7A	6	M1-1	11	4	BLK	38.7
75	101L18	TB3-8A	6	CR4-AC1	9	4	BLK	31.2
76	102F18	J7-18	2	TB3-6A	6	4	BLK	24.5
77	102K18	TB3-6A	6	CR4-AC2	9	4	BLK	30.2
78	109A18	R1-3	TIN	J7-19	2	4	BLK	29.0
79	110A18	A5-E	6	J7-20	2	4	BLK	22.0
80	110C18	A5-E	6	R1-1	TIN	4	BLK	37.0
81	114A16	A5-D	7	J7-23	2	3	BLK	22.0
82	115A16	A5-A	7	J7-28	2	3	BLK	20.5
83	116A16	A5-B	7	J7-4	2	3	BLK	21.0
84	117A16	A5-C	7	J7-5	2	3	BLK	21.5
85	120A18	M1-2	11	J7-3	2	4	BLK	29.0
86	121B18	J7-37	2	M2-(-)	11	4	BLK	25.3
87	122B18	J7-36	2	M2-(+)	11	4	BLK	25.3
88		S1-2	6	S1-4	6	4		4.3
89		S5-1	6	S5-4	6	4		1.3
90								
91		R1-2	TIN	R1-3	TIN	4		4.0

Figure FO-6. Control Box Wiring Harness Diagram, 400Hz (Sheet 3 of 3)