

***ARMY TM 9-2815-252-24P AIR FORCE TO 38G1-92-4**

TECHNICAL MANUAL

**UNIT, DIRECT SUPPORT AND
GENERAL SUPPORT MAINTENANCE
REPAIR PARTS AND SPECIAL TOOLS LIST**

FOR

DIESEL ENGINE MODEL DN2M-1 TWO-CYLINDER, FOUR CYCLE, FUEL INJECTED 2815-01-350-2205

Distribution Statement A. Approved for public release; distribution is unlimited.

*This manual supersedes TM 9-2815-252-24PRO 38G1-92-4, dated 1 July 1995, including all changes.

**HEADQUARTERS, DEPARTMENTS OF THE ARMY,
AND AIR FORCE**

30 OCTOBER 1996

TECHNICAL MANUAL
NO. 9-2815-252-24P

HEADQUARTERS
DEPARTMENTS OF THE ARMY AND THE AIR FORCE
WASHINGTON, D.C., 30 October 1996

UNIT, DIRECT SUPPORT AND
GENERAL SUPPORT MAINTENANCE
REPAIR PARTS AND SPECIAL TOOLS LIST

FOR

**DIESEL ENGINE
MODEL DN2M-1
TWO-CYLINDER, FOUR CYCLE FUEL INJECTED
2815-01-350-2205**

Current as of 1 October 1996

REPORTING ERRORS AND RECOMMENDING IMPROVEMENTS

You can help improve this manual. If you find any mistakes or if you know of a way to improve these procedures, please let us know.

(A) Mail your letter or DA Form 2028 (Recommended Changes to Publications and Blank Forms), or DA Form 2028-2 located in the back of this manual directly to: Commander, US Army Aviation and Troop Command, ATTN: AMSAT-I-MP, 4300 Goodfellow Blvd., St. Louis, MO 63120-1798. You may also submit your recommended changes by E-mail directly to <mpmt%avma28@st-louis-emh7.army.mil>. Instructions for sending an electronic 2028 may be found at the back of this publication immediately preceding the hard copy 2028.

(F) Air Force - AFTO Form 22 Directly to: Commander, Sacramento Air Logistics Center, ATTN: TILBA, McClellan AFB, CA 95652-5990 (AFMC)

A reply will be furnished directly to you.

DISTRIBUTION STATEMENT A: Approved for public release; distribution is unlimited.

***This manual supersedes TM 9-2815-252-24P/TO 38G1-92-4, dated 1 July 1995, including all changes.**

TABLE OF CONTENTS

	Page	Illus/ Figure
SECTION I. INTRODUCTION	1	
SECTION II. REPAIR PARTS UST		
Group01 Intake and Exhaust Manifold		
5kw, intake Manifold	1-1	1
Exhaust Manifold	2-1	2
Group 02 Cooling System	3-1	3
Group 03 Fuel System		
Fuel Pump and Lines	4-1	4
Fuel Injector and Lines..	5-1	5
Fuel solenoid Installation	6-1	6
Group 04 Lubrication System		
Oil Filter and Crankcase Door	7-1	7
Strainer and Oil Pump	8-1	8
Group 05 Governor System	9-1	9
Group 06 Starter Assembly		
Starter and Solenoid	10-1	10
Group 07 Engine Subassembly		
Cylinder Cover and Rocker Lever	11-1	11
Cylinder Head Assembly	12-1	12
Gear End Cover	13-1	13
Camshaft Assembly	14-1	14
Piston and Connecting Rod Assemblies	15-1	15
Flywheel Housing	16-1	16
Crankshaft Assembly	17-1	17
Crankcase Assembly	18-1	18
Group 08 BULK ITEMS	BULK-1	
SECTION III. SPECIAL TOOLS LIST	19-1	19
SECTION IV CROSS REFERENCE INDEXES	I-1	
National Stock Number Index..	I-1	
Part Number Index	I-3	
Figure and Item Number Index	I-10	

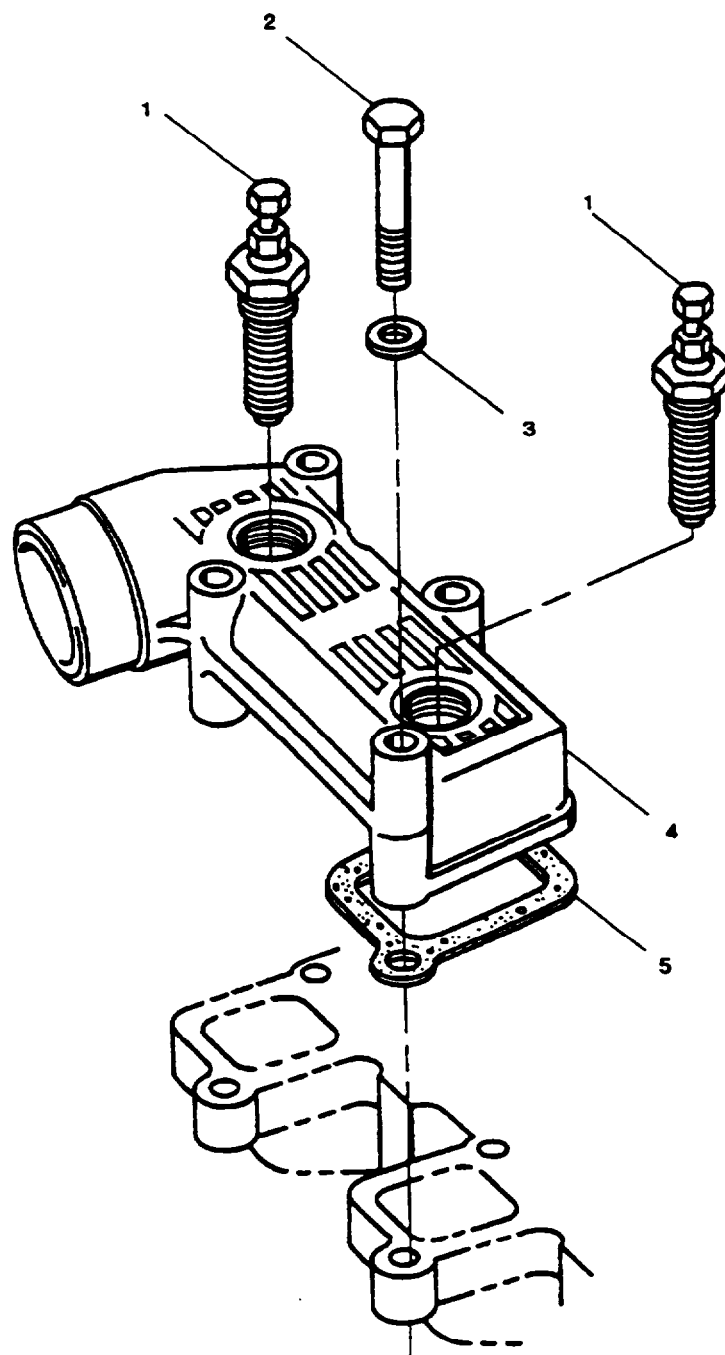


Figure 1. Intake Manifold

(1)	(2) SMR CODE				(3)	(4)	(5)	(6)	(7)
ITEM NO.	a ARMY	b AIR FORCE	c. NAVY	d USMC.	FSCM	PART NUMBER.	DESCRIPTION AND USABLE ON CODE (UOC)	QTY	USMC QTY PER EQUIP
							GROUP 01 – INTAKE AND EXHAUST MANIFOLD		
							FIG 1 – INTAKE MANIFOLD		
1	PAOZZ	PAOZZ			44940	186-6264	HEATING ELEMENT,ELE	2	
2	PAOZZ	PAOZZ			44940	186-6203	BOLT,MACHINE M6 X 75 MM	4	
3	PAOZZ	PAOZZ			44940	186-6015	WASHER,FLAT	4	
4	XDOZZ	XB			44940	186-6199	MANIFOLD,INLET	1	
5	PAOZZ	PAOZZ			44940	186-6202	GASKET	2	
							PART OF KIT P/N 186-6210 PART OF KIT P/N 186-6212		
							END OF FIGURE		

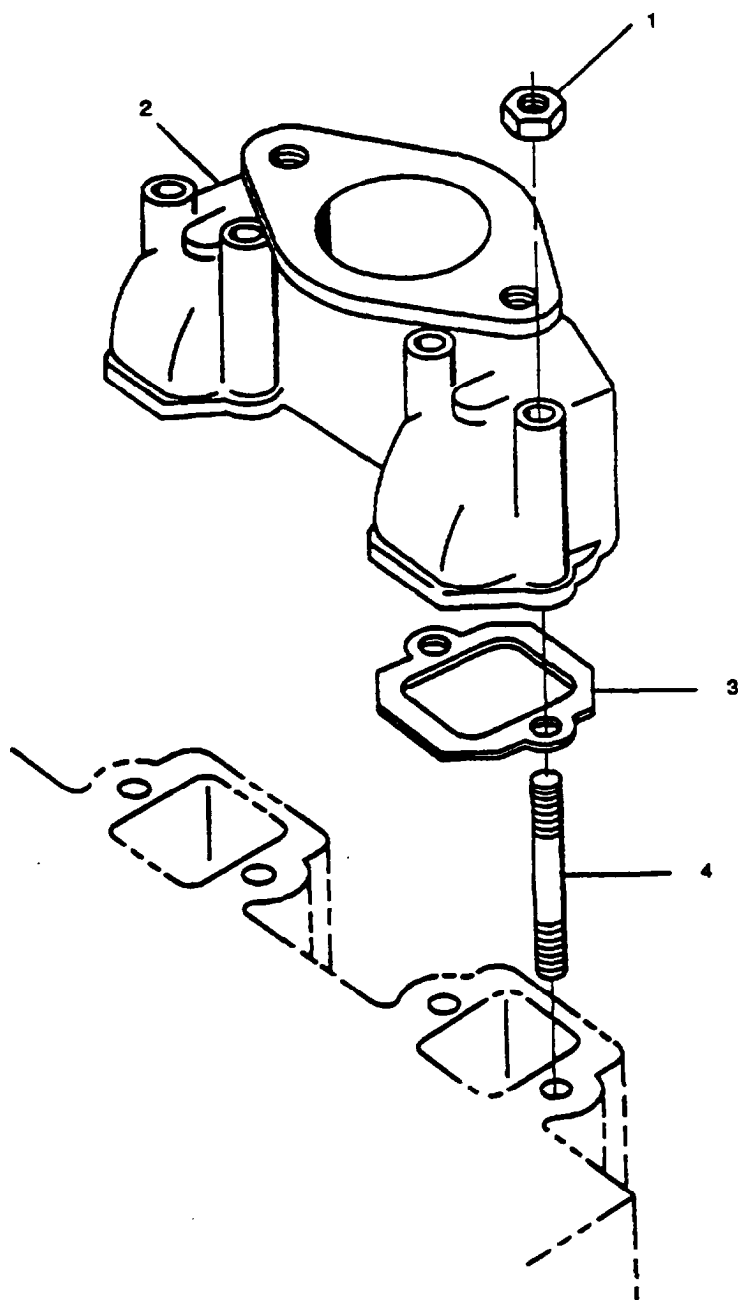


Figure 2. Exhaust Manifold

(1)	(2) SMR CODE				(3)	(4)	(5)	(6)	(7)
ITEM NO.	a ARMY	b AIR FORCE	c. NAVY	d USMC.	FSCM	PART NUMBER.	DESCRIPTION AND USABLE ON CODE (UOC)	QTY	USMC QTY PER EQUIP
							GROUP 01 – INTAKE AND EXHAUST MANIFOLD		
							FIG. 2 – EXHAUST MANIFOLD		
1	PAOZZ	PAOZZ			44940	186-6209	NUT,PLAIN,HEXAGON	4	
2	XDOZZ	XB			44910	186-6204	MANIFOLD,EXHAUST	1	
3	PAOZZ	PAOZZ			44910	186-6206	GASKET	2	
							PART OF KIT P/N 186-6210		
							PART OF KIT P/N 186-6212		
4	PAOZZ	PAOZZ			44910	186-6208	STUD,PLAIN	4	
							END OF FIGURE		

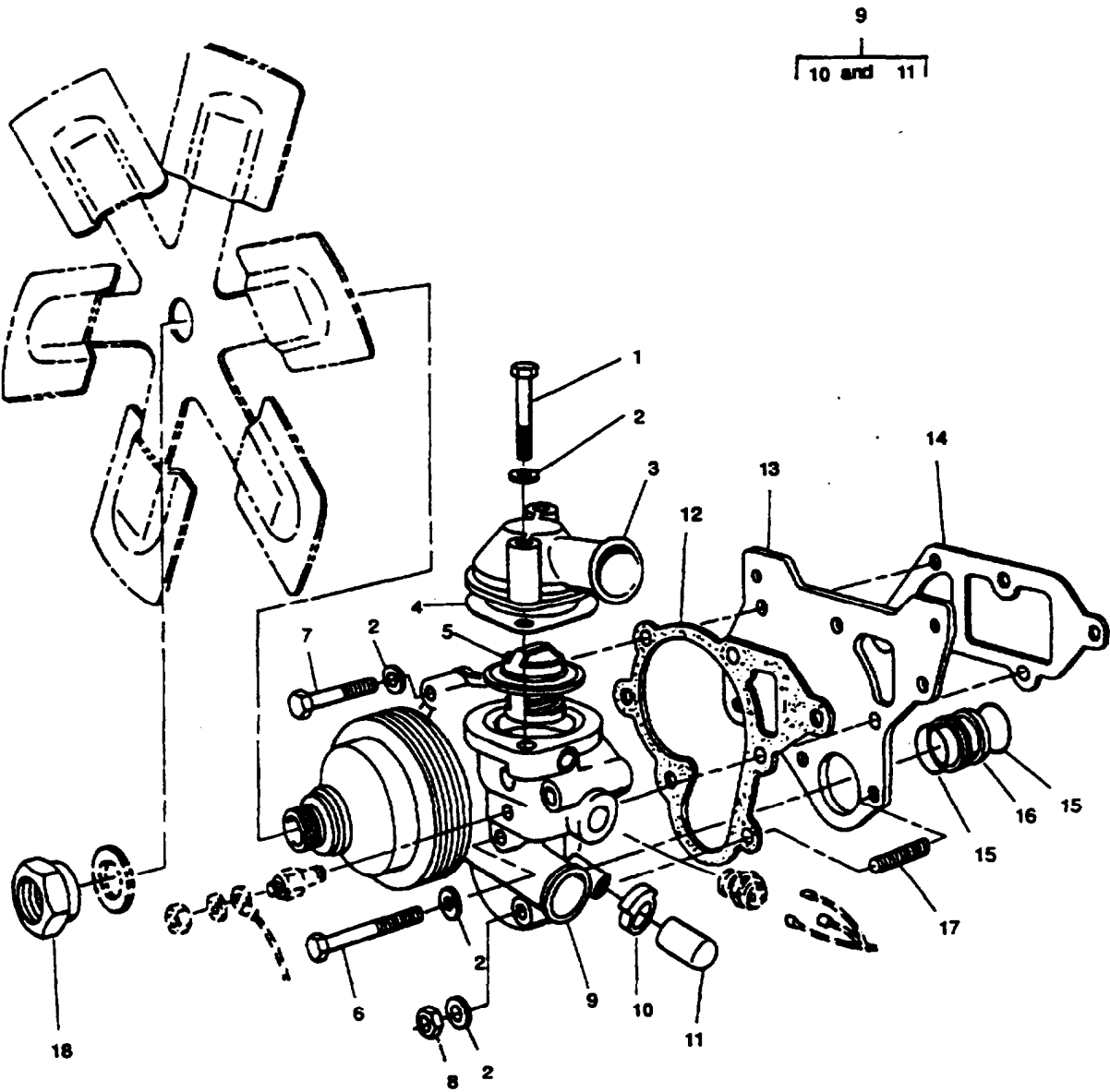


Figure 3. Cooling System

(1)	(2) SMR CODE				(3)	(4)	(5)	(6)	(7)
ITEM NO.	a ARMY	b AIR FORCE	c. NAVY	d USMC.	FSCM	PART NUMBER.	DESCRIPTION AND USABLE ON CODE (UOC)	QTY	USMC QTY PER EQUIP
							GROUP 02 – COOLING SYSTEM		
							FIG 3.- COOLING SYSTEM		
1	PAOZZ	PAOZZ			56161	10526115	BOLT MACHINE M8 X 60 MM	2	
2	PAOZA	PAOZZ			97947	027-00082	WASHER,FLAT	9	
3	XDOZZ	XB			44940	186-6189	HOUSING, THERMOSTAT	1	
4	PAOZZ	PAOZZ			44940	186-6190	GASKET PART OF KIT P/N 186-6210 PART OF KIT P/N 186-6212	1	
5	PAOZZ	PAOZZ			44940	186-6193	THERMOSTAT,FLOW CONTROL	1	
6	PAOZZ	PAOZZ			97947	272-00047	BOLT,MACHINE M8 X 75 MM	3	
7	PAOZZ	PAOZZ			44940	186-6186	SCREW, MACHINE M8 X 45 MM	2	
8	PAOZZ	PAOZZ			97947	272-00003	NUT M8 X 1.25-6H	2	
9	PAOZZ	PAOZZ			44940	186-6178	PUMP,COOLING SYSTEM	1	
10	PAOZZ	PAOZZ			44940	186-6282	.CLAMP,LOOP	1	
11	PAOZZ	PAOZZ			44940	186-6283	.CAP,TUBE	1	
12	PAOZZ	PAOZZ			44940	186-6180	GASKET PART OF KIT P/N 186-6210 PART OF KIT P/N 186-6212	1	
13	XDOZZ	XB			44940	186-6181	PLATE,MOUNTING	1	
14	PAOZZ	PAOZZ			44940	186-6182	GASKET PART OF KIT P/N 186-6210 PART OF KIT P/N 186-6210	1	
15	PAOZZ	PAOZZ			97947	601-20691	PACKING,PREFORMED PART OF KIT P/N 186-6210	2	
16	XDOZZ	XB			44940	186-6183	SLEEVE,CLINCH	1	
17	PAOZZ	PAOZZ			44940	186-6188	STUD,PLAIN M8 X 40 MM	2	
18	PAOZZ	PAOZZ			44940	186-6194	NUT,PLAIN	1	
							END OF FIGURE		

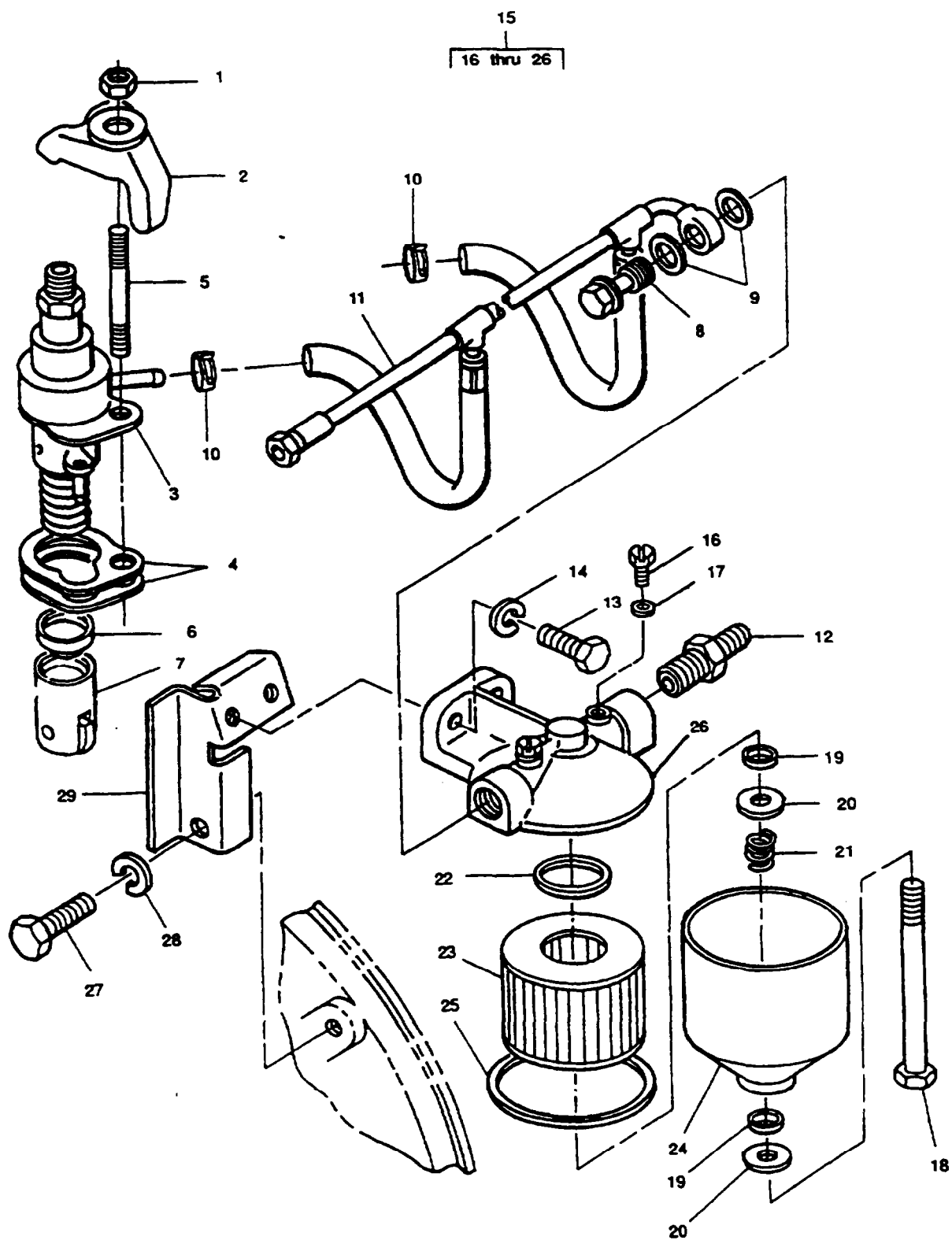


Figure 4. Fuel Pump and Lines

(1)	(2) SMR CODE				(3)	(4)	(5)	(6)	(7)
ITEM NO.	a ARMY	b AIR FORCE	c. NAVY	d USMC.	FSCM	PART NUMBER.	DESCRIPTION AND USABLE ON CODE (UOC)	QTY	USMC QTY PER EQUIP
GROUP 03 FUEL SYSTEM									
FIG 4 FUEL PUMP AND LINES									
1	PAFZZ	PAOZZ			44940	186-6154	NUT,PLAIN,HEXAGON M8 X 1.25	2	
2	XDFZZ	XB			44940	186-6158	CLAMP,FUEL PUMP	2	
3	PAFZZ	PAOZZ			44940	486-6151	PUMP,FUEL,METERING	2	
4	PAFZZ	PAOZZ			44940	486-6157	SHIM ASSORTMENT	V	
5	PAFZZ	PAOZZ			44940	186-6153	STUD,PLAIN M8 X 1.25 X 55 MM	2	
6	PAFZZ	PAOZZ			44940	186-6290	CUP, THRUST	2	
7	PBFZZ	PBOZZ			44940	186-6152	TAPPET,ENGINE POPPET	2	
8	PAOZZ	PAOZZ			44940	186-6152	PLUG ASSY,SEAL	1	
9	PAOZZ	PAOZZ			44940	186-6163	SEAL,NONMETTALLIC PART OF KIT P/N 186-6212	2	
10	PAOZZ	PAOZZ			44940	186-6161	CLAMP,HOSE	2	
11	PAOZZ	PAOZZ			44904	186-6159	TUBE ASSY,METAL	1	
12	PAOZZ	PAOZZ			30780	4-4F3BXSS	CONNECTOR,MALE	1	
13	PAOZZ	PAOZZ			56161	10503805	SCREW,CAP,HEXAGON	2	
14	PAOZZ	PAOZZ			15526	127-B6	WASHER,LOCK	2	
15	PBOOO	PBOOO			97947	284359	FILTER,FUEL	1	
16	KFOZZ	KF			44940	186-6293-01	SCREW,VENT PART OF KIT P/N 393331	2	
17	KFOZZ	KF			44940	186-6289	.SEAL,VENT SCREW PART OF KIT P/N 393331	2	
18	XAOZZ	XA			44940	186-6278-03	.SCREW,RETURING	1	
19	KFOZZ	KF			44940	186-6279-03	.SEAL PART OF KIT P/N 393331	2	
20	KFOZZ	KF			44940	186-6293-03	PART OF KIT P/N 7961121 .WASHER	2	
21	KFOZZ	KF			44940	186-6293-02	PART OF KIT P/N 393331 .SPRING	1	
22	KFOZZ	KF			44940	186-6279-02	PART OF KIT P/N 393331 .SEAL,ELEMENT	1	
23	KFOZZ	KF			44940	186-6279-04	PART OF KIT P/N 393331 PART OF KIT P/N 7961121 .ELEMENT,FILTER	1	
24	XAOZZ	XA			44940	186-6278-02	PART OF KIT P/N 7961121 .BOWL,FILTER	1	
25	KFOZZ	KF			44940	186-6279-01	.SEAL,BOWL PART OF KIT P/N 393331	1	
26	XAOZZ	XA			44940	186-6278-01	PART OF KIT P/N 7961121 .HEAD,FILTER	1	
27	PAOZZ	PAOZZ			44940	800-0046	SCREW,CAP,HEXAGON	1	
28	PAOZZ	PAOZZ			44940	850-0050	WASHER,LOCK	1	
29	XDOZZ	XB			44940	149-2379	BRACKET,FUEL	1	

ARMY TM9-2815-252-24P
AIR FORCE TO 38G1-92-4

(1)	(2) SMR CODE				(3)	(4)	(5)	(6)	(7)
ITEM NO.	a ARMY	b AIR FORCE	c. NAVY	d USMC.	FSCM	PART NUMBER.	DESCRIPTION AND USABLE ON CODE (UOC)	QTY	USMC QTY PER EQUIP
	PAOZZ	PAOZZ			97947	393331	SPARES PACK KIT (2) 4-16 SCREW, VENT (2) 4-17 SEAL, VENT SCREW SEAL (2) 4-19 WASHER (2) 4-20 SPRING (1) 4-21 SEAL.ELEMENT (1) 4-21 SEAL.BOWL (1) 4-25	1	
	PAOZZ	PAOZZ			70040	7961121	FUEL FILTER KIT SEAL (2) 4-19 SEAL,ELEMENT (1) 4-22 ELEMENT (1) 4-23 FILTER SEAL,BOWL (1) 4-25	1	

END OF FIGURE

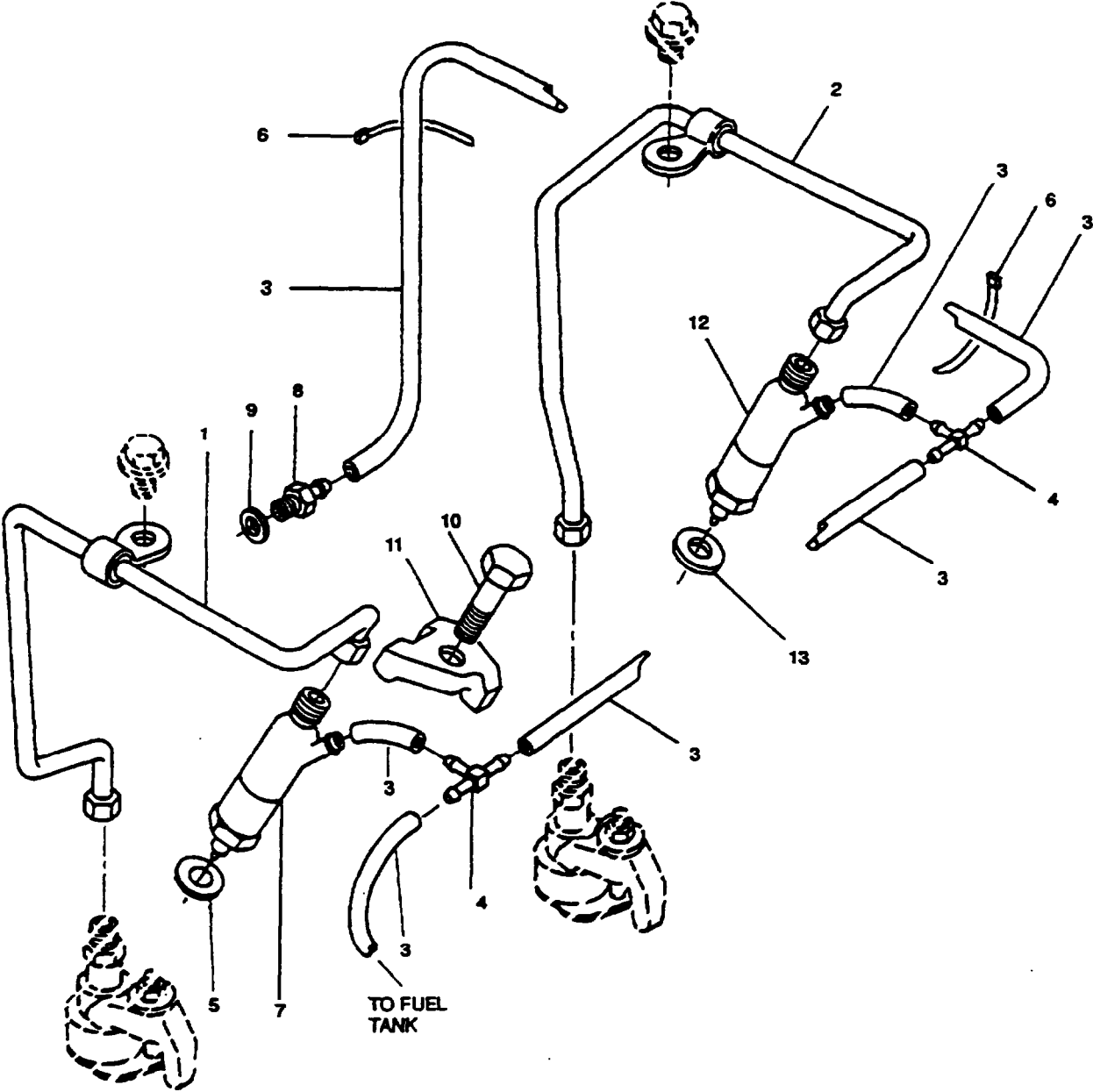


Figure 5. Fuel Injector and Lines

(1)	(2) SMR CODE				(3)	(4)	(5)	(6)	(7)
ITEM NO.	a ARMY	b AIR FORCE	c. NAVY	d USMC.	FSCM	PART NUMBER.	DESCRIPTION AND USABLE ON CODE (UOC)	QTY	USMC QTY PER EQUIP
GROUP 03 – FUEL SYSTEM									
FIG. 5 – FUEL INJECTOR AND LINES									
1	XDOZZ	XB			44940	186-6170	PIPE ASSY,FUEL	1	
2	XDOZZ	XB			44940	186-6171	PIPE ASSY,FUEL	1	
3	MOOZZ	MOO			44940	176-6176	TUBING,NONMETALLIC MAKE FROM P/N 503-1252 (44940) AS REQUIRED	7	
4	PAOZZ	PAOZZ			44940	186-6177	TEE,HOSE	2	
5	PAFZZ	PAOZZ			44940	186-6173	WASHER,FLAT	2	
							PART OF KIT P/N 186-6210 PART OF KIT P/N 186-6212 REQUIRED		
6	PAOZZ	PAOZZ			96906	MS3367-4-9	STRAP,TIEDOWN,ELECT	V	
7	PAFZZ	PAOZZ			44940	186-6168	PUMP,FUEL,METERING	2	
8	PAOZZ	PAOZZ			44940	186-6164	UNION,PIPE TO HOSE	1	
9	PAOZZ	PAOZZ			44940	186-6165	WASHER,FLAT	1	
10	PAFZZ	PAOZZ			44940	186-6174	BOLT,MACHINE	2	
11	XDFZZ	XB			44940	186-6172	CLAMP,INJECTOR	2	

END OF FIGURE

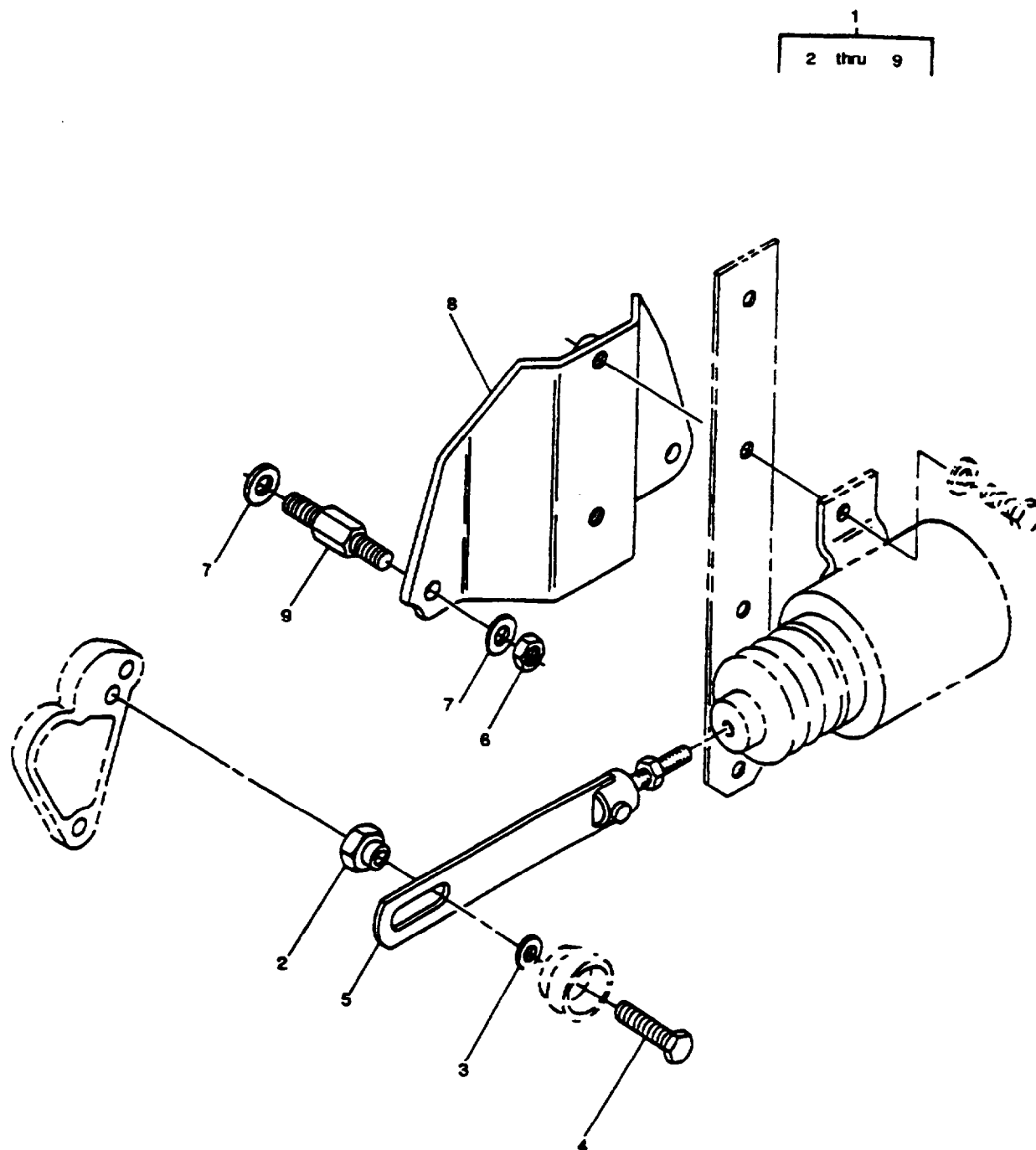


Figure 6. Fuel Solenoid installation

(1)	(2) SMR CODE				(3)	(4)	(5)	(6)	(7)
ITEM NO.	a ARMY	b AIR FORCE	c. NAVY	d USMC.	FSCM	PART NUMBER.	DESCRIPTION AND USABLE ON CODE (UOC)	QTY	USMC QTY PER EQUIP
GROUP 03 – FUEL SYSTEM									
FIG. 6 FUEL SOLENOID INSTALLATION									
1	XDOOO	XB			44940	186-6179	FUEL SOLENOID INSTL	1	
2	ADOZZ	XB			44940	186-6252	.NUT,RETAINING	1	
3	PAOZZ	PAOZZ			44940	186-6233	.WASHER,FLAT	1	
4	PAOZZ	PAOZZ			44940	800-2010	.SCREW.CAP.HEXAGON	1	
5	XDOZZ	XB			44940	186-6251	.LINKAGE	1	
FUEL CONTROL									
6	PAOZZ	PAOZZ			44940	186-6235	.NUT,PLAIN,HEXAGON	2	
7	PAOZZ	PAOZZ			44940	186-6240	.WASHER,FLAT	6	
8	XDOZZ	XB			44940	186-6135	.BRACKET,ANGLE	1	
9	XDOZZ	XB			44940	186-6234	.STUD,SHOULDERED	2	

END OF FIGURE

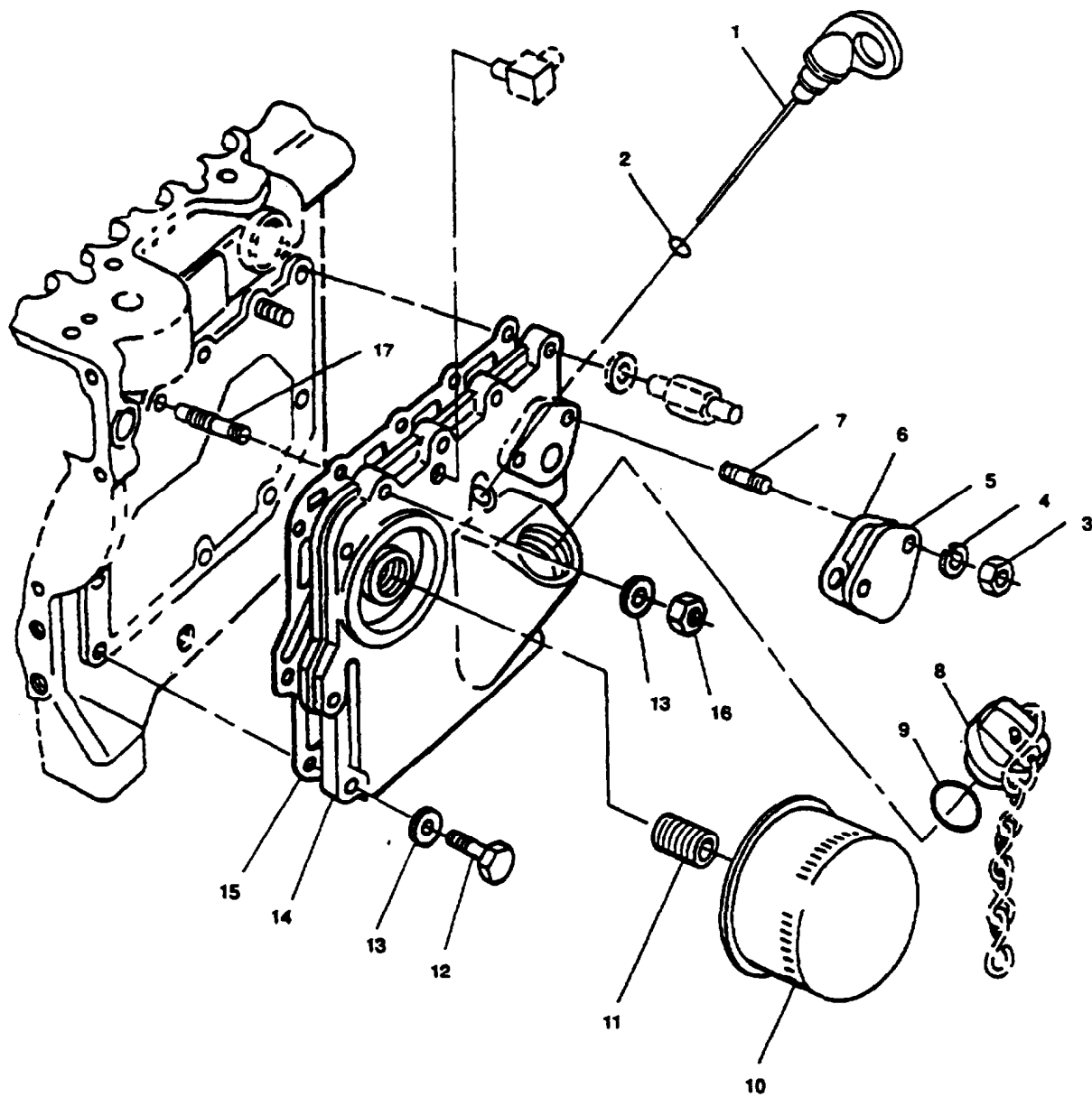


Figure 7. Oil Filter and Crankcase Door

**ARMY TM9-2815-252-24P
AIR FORCE TO 38G1-92-4**

(1)	(2) SMR CODE				(3)	(4)	(5)	(6)	(7)
ITEM NO.	a ARMY	b AIR FORCE	c. NAVY	d USMC.	FSCM	PART NUMBER.	DESCRIPTION AND USABLE ON CODE (UOC)	QTY	USMC QTY PER EQUIP
GROUP 04 – LUBRICATION SYSTEM									
FIG 7 CRANKCASE COVER									
1	XDOZZ	XB			44940	186-6026	DIPSTICK	1	
2	PAOZA	PAOZZ			97947	201-13120	.PACKING,PREFORMED	1	
3	PAOZZ	PAOZZ			97947	272-00003	NUT	2	
4	PAOZZ	PAOZZ			44940	186-6019	M8 X 1.25 – 6H WASHER,LOCK	2	
5	XDOZZ	XB			44940	186-6016	PALTE,BLANKING	1	
6	PAOZZ	PAOZZ			44940	186-6017	GASKET	1	
7	PAOZZ	PAOZZ			44940	186-6018	PART OF KIT P/N 186-6212 STUD,PLAIN	2	
8	XDOZZ	XB			44940	186-6023	M8 X 25MM CAP,OIL FILTER	1	
9	PAOZZ	PAOZZ			44940	186-6024	PACKING,PERFORMED	1	
10	PAOZZ	PAOZZ			44940	186-6025	FILTER ELEMENT,FLUID	1	
11	PAOZZ	XB			44940	186-6021	NIPPLE,TUBE	1	
12	PAOZZ	PAOZZ			97947	272-00256	BOLT,MACHINE	9	
13	PAOZZ	PAOZZ			44940	186-6015	WASHER,FLAT	9	
14	XDOZZ	XB			44940	186-6009	DOOR,CRANKCASE	1	
15	PAOZZ	PAOZZ			44940	186-6010	GASKET	1	
16	PAOZZ	PAOZZ			44940	186-6209	PART OF KIT P/N 186-6212 NUT,PLAIN,HEXAGON	2	
17	PAOZZ	PAOZZ			44940	186-6250	STUD,SHOULDERED	2	
END OF FIGURE									

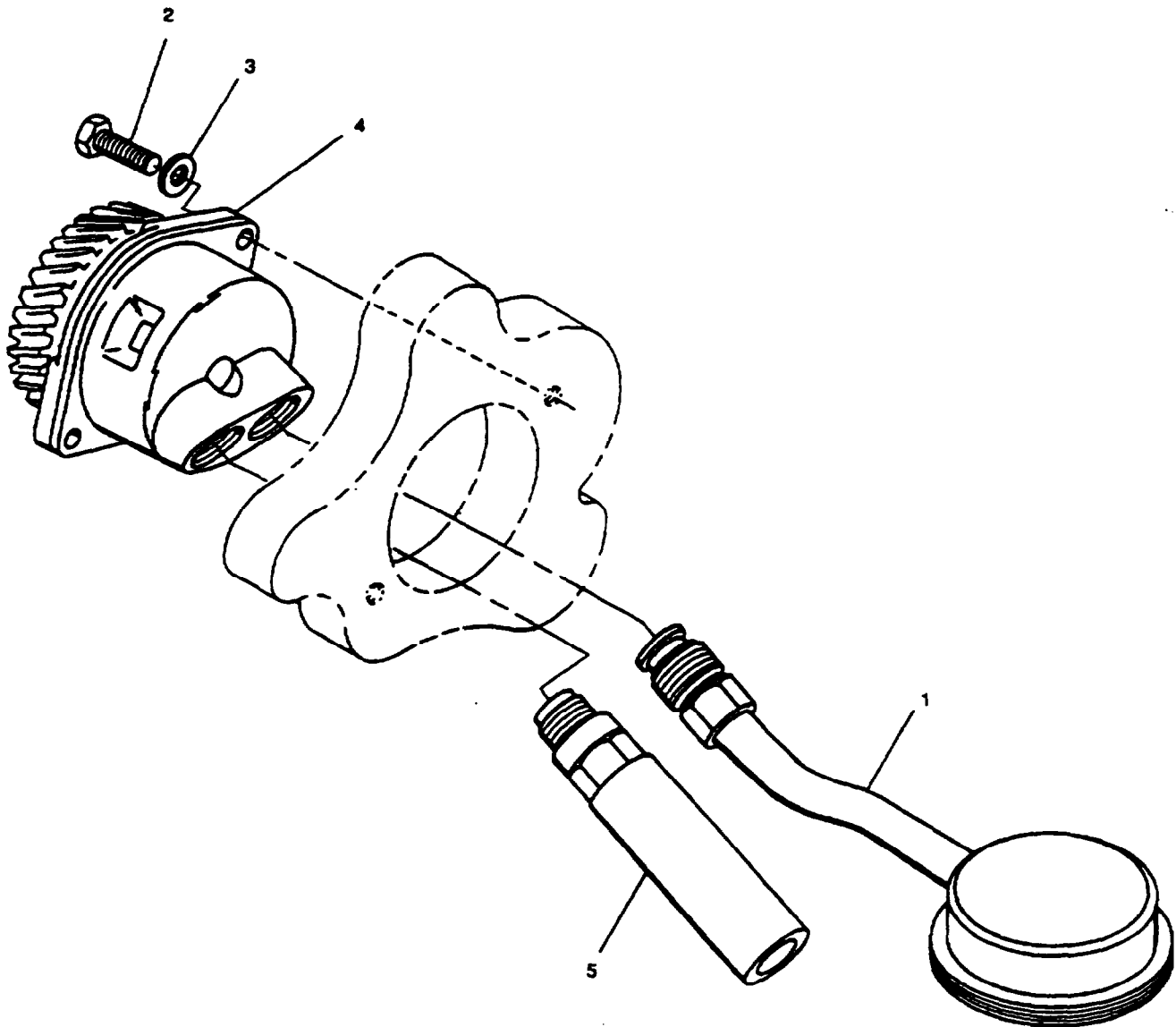


Figure 8. Strainer and Oil Pump

(1)	(2) SMR CODE				(3)	(4)	(5)	(6)	(7)
ITEM NO.	a ARMY	b AIR FORCE	c. NAVY	d USMC.	FSCM	PART NUMBER.	DESCRIPTION AND USABLE ON CODE (UOC)	QTY	USMC QTY PER EQUIP
							GROUP 04 – LUBRICATION SYSTEM		
							FIG. 8 – STRAINER AND OIL PUMP		
1	XDFZZ	XB			44940	186-6032	OIL STRAINER	1	
2	PAFZZ	PAOZZ			56161	10503805	SCREW,CAP,HEXAGON M6 X 1.0 – 20 (6G)	2	
3	PAFZZ	PAOZZ			44940	186-6015	WASHER,FLAT	2	
4	PAFZZ	PAOZZ			44940	186-6030	OIL PUMP ASSEMBLY,E	1	
5	PAFZZ	PAOZZ			44940	186-6031	VALVE,SAFETY RELIEF	1	
							END OF FIGURE		

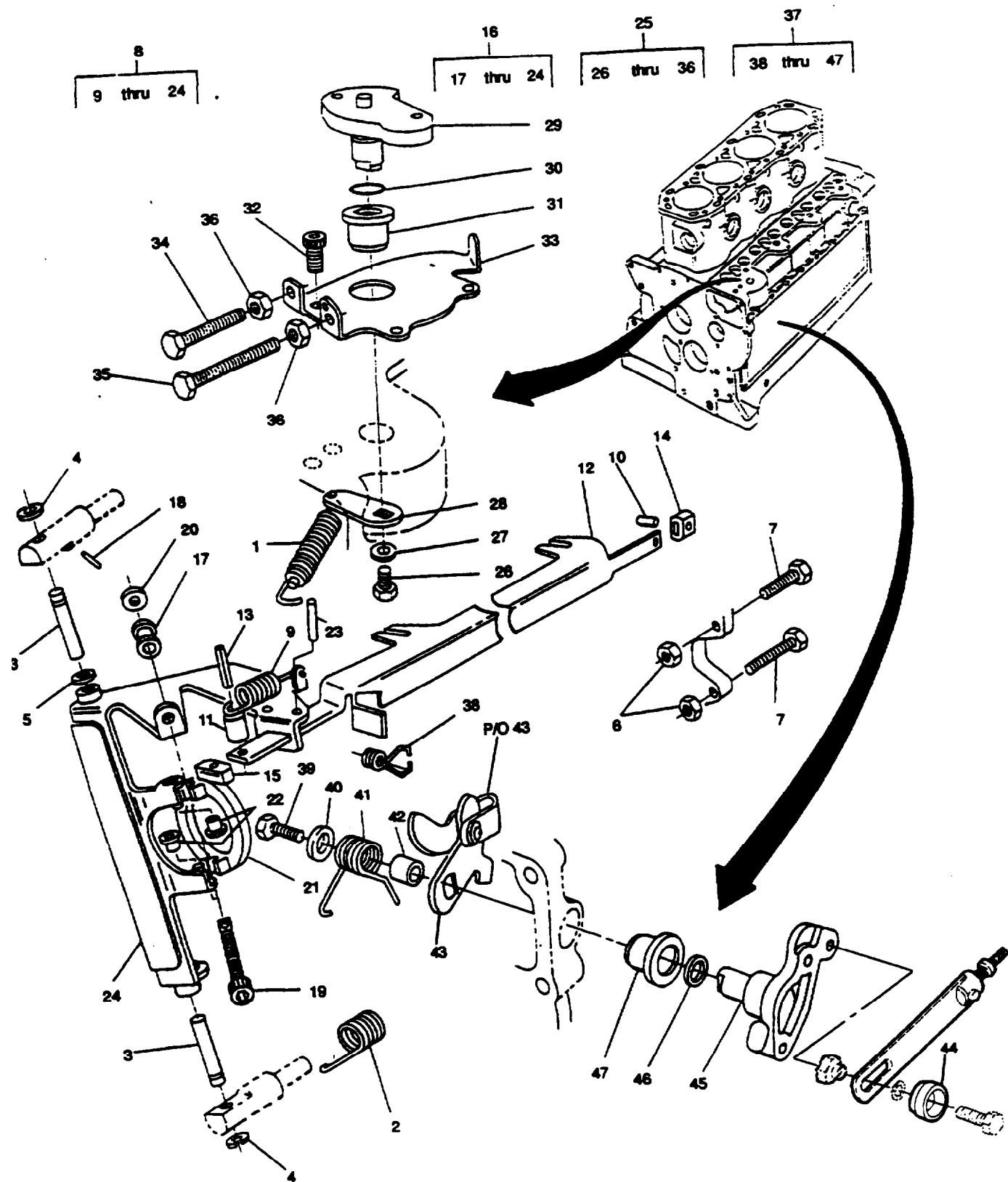


Figure 9. Governor System

(1)	(2) SMR CODE				(3)	(4)	(5)	(6)	(7)
ITEM NO.	a ARMY	b AIR FORCE	c. NAVY	d USMC.	FSCM	PART NUMBER.	DESCRIPTION AND USABLE ON CODE (UOC)	QTY	USMC QTY PER EQUIP
							GROUP 05 – GOVERNOR SYSTEM		
							FIG. 9 GOVERNOR SYSTEM		
1	PAFZZ	PAOZZ			44940	186-6138	SPRING,HELICAL	1	
2	PAFZZ	PAOZZ			44940	186-6142	SPRING,HELICAL	1	
3	KFFZZ	KF			44940	186-6140-1	PIN	2	
4	PAFZZ	PAOZZ			44940	186-6141	PART OF KIT P/N 186-6140 RETAINER,PIVOT	2	
5	PAFZZ	PAOZZ			44940	186-6143	PART OF KIT P/N 186-6140 SHIM	V	
6	PAOZZ	PAOZZ			15526	934-SX- M5X0.8	NUT,PLAIN,HEX	2	
7	PAOZZ	PAOZZ			44940	10504502	SCREW,CAP,HEXAGON M5 X 0.8 – 6G X 25	2	
8	XDFFF	XB			44940	186-6119	LVR & RACK ASSY,GOV	1	
9	PAFZZ	PAOZZ			44940	186-6121	.SPRING,HELICAL	1	
10	XAFZZ	XA			44940	186-6119-03	.PIN,STRAIGHT,HEADL	1	
11	XAFZZ	XA			44940	186-6119-04	.BUSHING,SPRING	1	
12	XAFZZ	XA			44940	186-6119-01	.RACK,FUEL PUMP	1	
13	XAFZZ	XA			44940	186-6119-06	.PIN,SPRING	1	
14	XAFZZ	XA			44940	186-6119-02	.BEARING	1	
15	XAFZZ	XA			44940	186-6119-05	.TOE	1	
16	XAFZZ	XA			44940	186-6287	.LEVER,GOVERNOR	1	
17	PAFZZ	PAOZZ			44940	186-6261	..RETAINER,HELICAL CO	1	
18	PAFZZ	PAOZZ			44940	186-6267	..PIN,STRAIGHT HEAD	1	
19	PAFZZ	PAOZZ			44940	186-6260	..SCREW,DROOP ADJUST	1	
20	PAFZZ	PAOZZ			44940	186-6143	..SHIM	1	
21	XAFZZ	XA			44940	186-6122	..COLLAR,THRUST	1	
22	PAFZZ	PAOZZ			44940	186-6288	..BUSHING,SLEEVE	2	
23	XAFZZ	XA			44940	186-6119-03	..PIN,SPRING	2	
24	XAFZZ	XA			44940	186-6287-01	..LEVER,GOVERNOR	1	
25	XDFFF	XB			44940	186-6123	GOV SPEED ASSEMBLY	1	
26	PAFZZ	PAOZZ			97947	702201	.BOLT,MACHINE M6 X 1.0 – 6G X 12	1	
27	PAFZZ	PAOZZ			44940	186-6131	.WASHER,FLAT	1	
28	XAFZZ	XA			44940	186-6123-03	.LEVER	1	
29	XAFZZ	XA			44940	186-6123-02	.QUADRANT,SPEED	1	
30	PAFZZ	PAOZZ			44940	186-6129	.PACKING,PREFORMED PART OF KIT P/N 186-6212	1	
31	PAFZZ	PAOZZ			44940	186-6124	.BUSHING,SLEEVE	1	
32	PAFZZ	PAOZZ			44940	186-6125	.SCREW,CAP,SOCKET HE M6 X 1.0 – 6G X 12	1	
33	XAFZZ	XA			44940	186-6123-01	.PLATE,BASE	1	
34	PAFZZ	PAOZZ			44940	186-6126	.SCREW,CAP,HEXAGON M5 X 0.8 – 6G X 50	1	
35	PAFZZ	PAOZZ			44940	186-6127	.SCREW,CAP,HEXAGON M5 X 0.8 – 6G X 35	1	
36	PAFZZ	PAOZZ			15526	934-A4-M5 X .8	.NUT,PLAIN,HEX	2	

ARMY TM9-2815-252-24P
AIR FORCE TO 38G1-92-4

(1)	(2) SMR CODE				(3)	(4)	(5)	(6)	(7)
ITEM NO.	a ARMY	b AIR FORCE	c. NAVY	d USMC.	FSCM	PART NUMBER.	DESCRIPTION AND USABLE ON CODE (UOC)	QTY	USMC QTY PER EQUIP
37	XDFFF	XB			44940	186-6132	FUEL PUMP LEVER ASSY	1	
38	PAFZZ	PAOZZ			44940	186-6136	.SPRING,HELICAL	1	
39	PAFZZ	PAOZZ			56161	10504502	.SCREW,CAP,HEXAGON M5 X 0.8 – 6G X 25	1	
40	PAFZZ	PAOZZ			44940	186-6131	.WASHER,FLAT	1	
41	PAFZZ	PAOZZ			44940	186-6137	.SPRING,HELICAL	1	
42	XAFZZ	XA			44940	186-6132-03	.BUSHING,PIVOT	1	
43	XAFZZ	XA			44940	186-6132-02	.LEVER,INTERNAL STOP/RUN	1	
44	XDOZZ	XB			44940	186-6265	.KNOB		
45	XAFZZ	XA			44940	186-6132-01	.LEVER,EXTERNAL STOP/RUN	1	
46	PAFZZ	PAOZZ			44940	186-6129	.PACKING,PREFORMED	1	
47	PAFZZ	PAOZZ			44940	186-6124	.BUSHING,SLEEVE	1	
	PAFZZ	PAOZZ			44940	186-6140	PIN,SHOULDER,HEADLE PIN (2) 9-3 RETAINER(2) 9-4	1	

END OF FIGURE

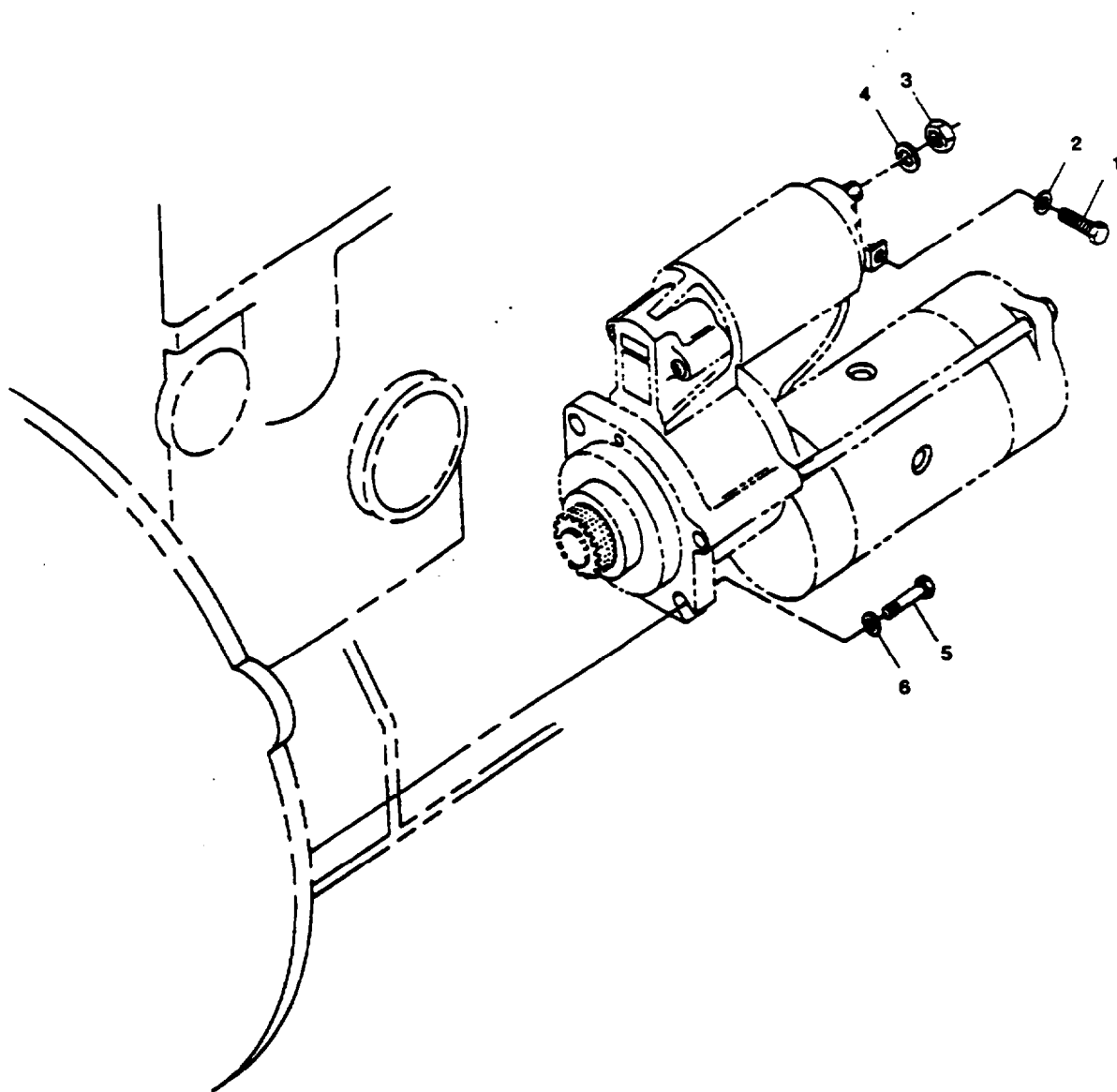


Figure 10. Starter and Solenoid (Sheet 1 of 2)

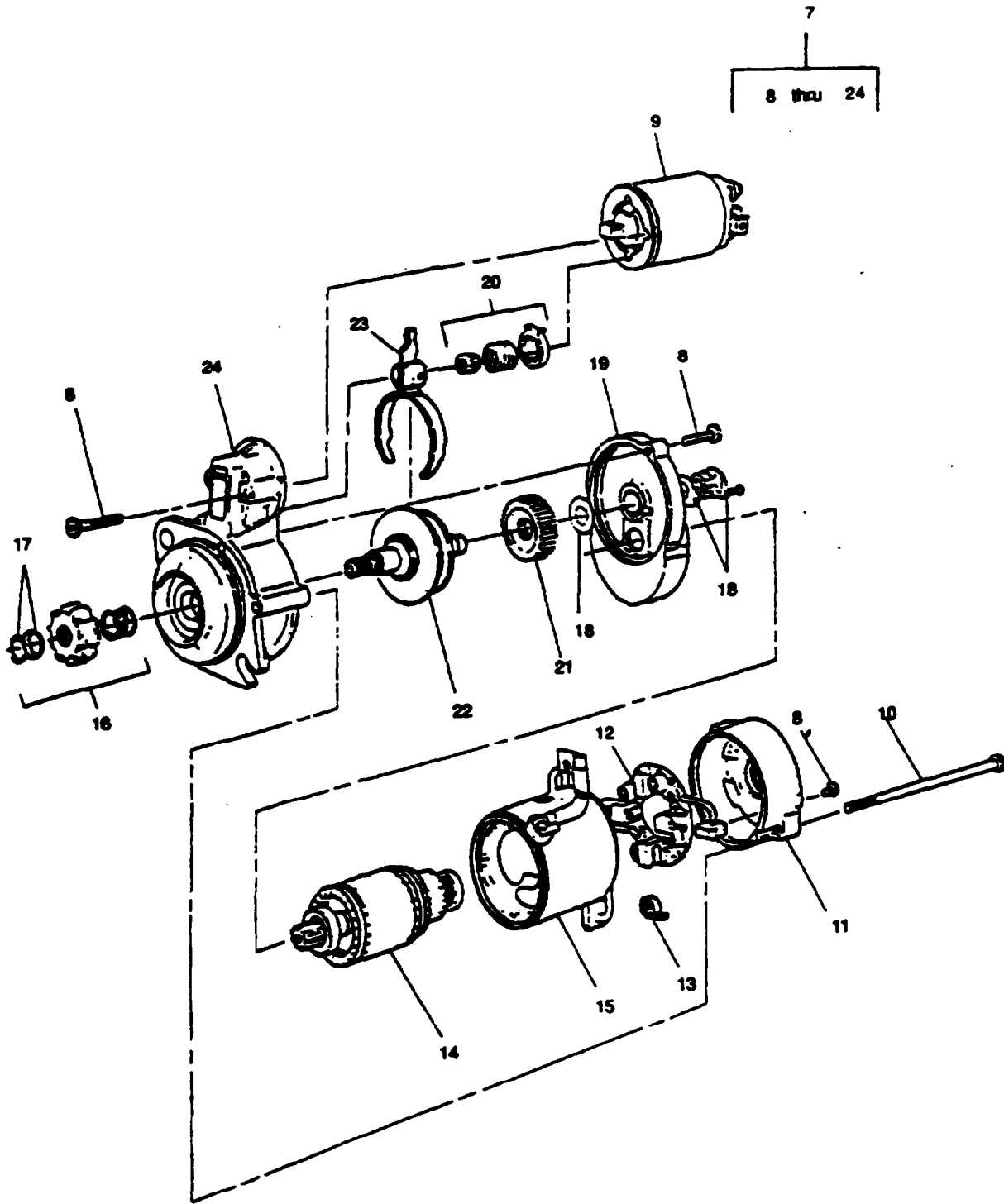


FIGURE 10. Starter and Solenoid (Sheet 2 of 2)

(1)	(2) SMR CODE				(3)	(4)	(5)	(6)	(7)
ITEM NO.	a ARMY	b AIR FORCE	c. NAVY	d USMC.	FSCM	PART NUMBER.	DESCRIPTION AND USABLE ON CODE (UOC)	QTY	USMC QTY PER EQUIP
GROUP 06 – STARTER ASSEMBLY									
FIG. 10 – STARTER AND SOLENOID									
1	PAOZZ	PAOZZ			44940	C0718100200	SCREW,CAP,HEXAGON	1	
2	PAOZZ	PAOZ			15434	C0850200500	WASHER,LOCK	1	
3	PAOZZ	PAOZZ			44940	860-2008	NUT,PLAIN,HEX	2	
4	PAOZZ	PAOZZ			15434	C0850200800	WASHER,LOCK	2	
5	PAOZZ	PAOZZ			15434	C0720180600	SCREW	2	
6	PAOZZ	PAOZZ			15434	C0740101000	WASHER,FLAT	2	
7	PAOFF	PAOOO			44940	191-1550	STARTER,ENGINE,EL	1	
8	PAOZZ	PAOZZ			44940	191-1450	.SETSCREW	1	
9	PAOZZ	PAOZZ			44940	191-1609	.SOLENOID ASSEMBLY	1	
10	PAFZZ	PAOZZ			44940	191-1431	.BOLT SET	1	
11	PAFZZ	PAOZZ			44940	191-1432	.BRACKET,REAR	1	
12	PAFZZ	PAOZZ			44940	191-1608	.HOLDER,ELECTRICAL	1	
13	PAFZZ	PAOZZ			44940	191-1433	..SPRING,BRUSH	4	
14	PAFZZ	PAOZZ			44940	191-1606	.ARMATURE,STARTER	1	
15	PBFZZ	PBOZZ			44940	191-1607	.HOUSING,ENGINE,DRIVE	1	
16	PAFZZ	PAOZZ			15434	C0191144300	.PARTS KIT,STARTER	1	
17	PAFZZ	PAOZZ			44940	191-1442	..PARTS KIT.STARTER	1	
18	PAFZZ	PAOZZ			44940	191-1444	.PARTS KIT,STARTER	1	
19	PAFZZ	PAOZZ			44940	191-1439	.BRACKET,STARTER.	1	
20	PAFZZ	PAOZZ			44940	191-1440	.SPRING ASSORTMENT	1	
21	PAFZZ	PAOZZ			44940	191-1446	.GEAR,SPUR	1	
22	PAFZZ	PAOZZ			44940	191-1445	.DRIVE,ENGINE,ELEC	1	
23	PBFZZ	PBOZZ			44940	191-1441	.SHIFTER FORK	1	
24	PBFZZ	PBOZZ			44940	191-1605	.HOUSING,ENGINE DRIV	1	

END OF FIGURE

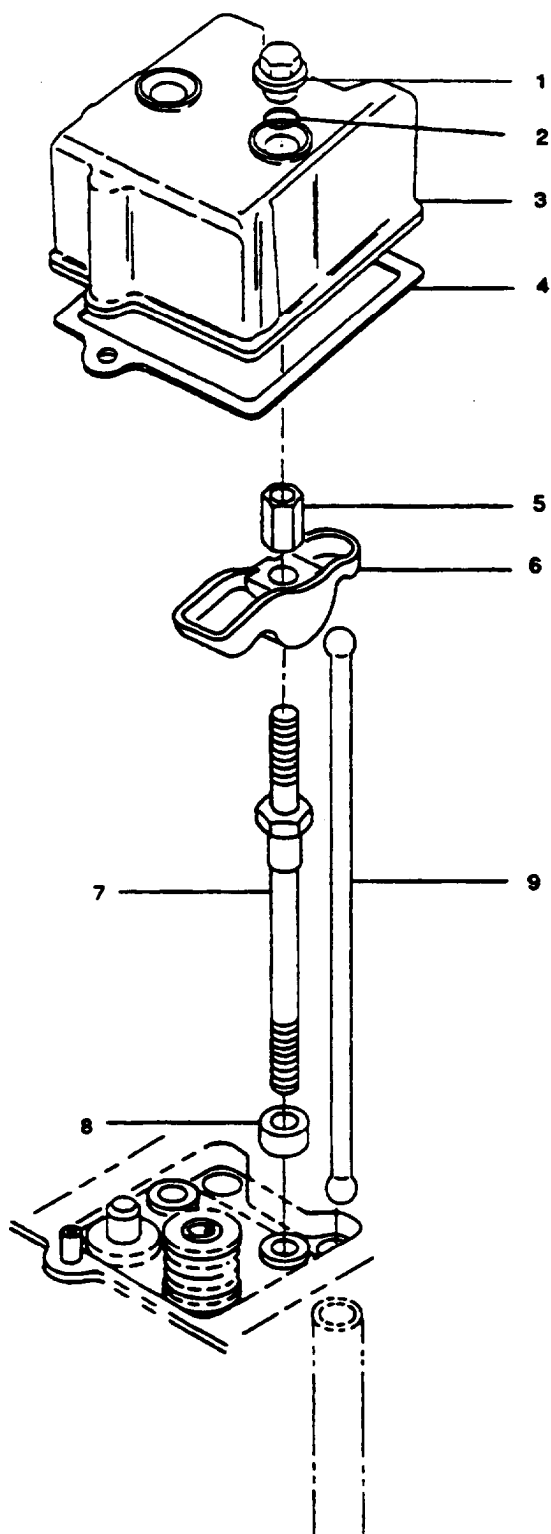


Figure 11. Cylinder Cover and Rocker Lever

**ARMY TM9-2815-252-24P
AIR FORCE TO 38G1-92-4**

(1)	(2) SMR CODE				(3)	(4)	(5)	(6)	(7)
ITEM NO.	a ARMY	b AIR FORCE	c. NAVY	d USMC.	FSCM	PART NUMBER.	DESCRIPTION AND USABLE ON CODE (UOC)	QTY	USMC QTY PER EQUIP
							GROUP 07 –ENGINE SUBASSEMBLY		
							FIG 11 – CYLINDER COVER AND ROCKER LEVER		
1	PAOZZ	PAOZZ			44940	186-6118	NUT,PLAIN,CONE SEAT	4	
2	PAOZZ	PAOZZ			97947	201-81200	SEAL,SPECIAL	4	
							PART OF KIN P/N 186-3210		
							PART OF KIT P/N 186-6212		
3	XDOZZ	XB			44940	186-6116	COVER,VALVE	2	
4	PAOZZ	PAOZZ			44940	186-6117	GASKET	2	
							VALVE COVER		
							PART OF KIT P/V 186-6210		
							PART OF KIT P/N 186-6212		
5	PAFZZ	PAOZZ			44940	186-6095	NUT,PLAIN,HEX	4	
6	PAFZZ	PAOZZ			44940	186-6094	ROCKER ARM ASSEMBLY	4	
7	PAFZZ	PAOZZ			44940	186-6104	BOLT,MACHINE	4	
							CYLINDER HEAD		
8	PAFZZ	PAOZZ			44940	186-6107	SPACER,SLEEVE	4	
9	PAFZZ	PAOZZ			44940	186-6098	PUSH ROD ENGINE	4	
							END OF FIGURE		

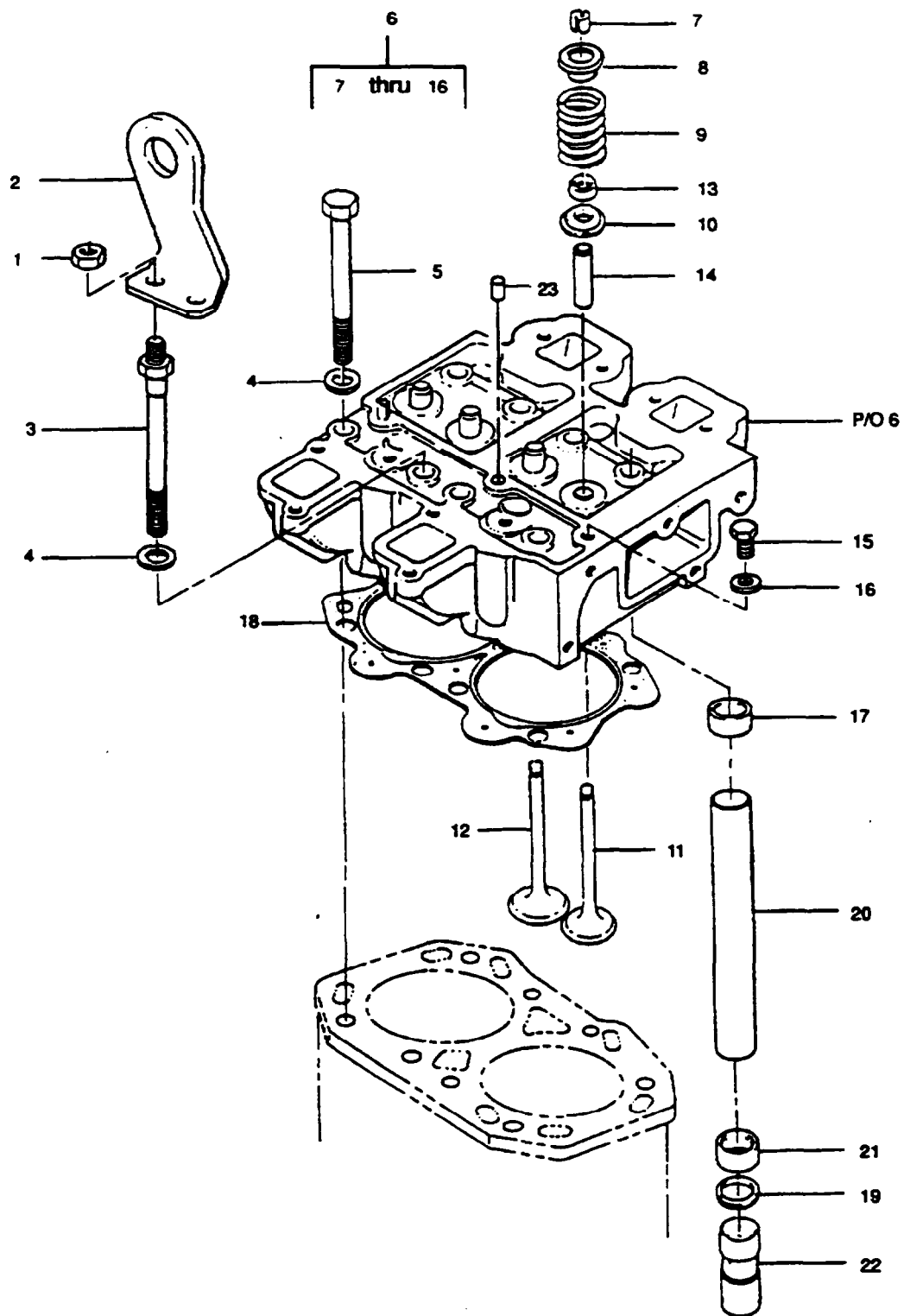


Figure 12. Cylinder Head Assembly

(1)	(2) SMR CODE				(3)	(4)	(5)	(6)	(7)
ITEM NO.	a ARMY	b AIR FORCE	c. NAVY	d USMC.	FSCM	PART NUMBER.	DESCRIPTION AND USABLE ON CODE (UOC)	QTY	USMC QTY PER EQUIP
GROUP 07 – ENGINE SUBASSEMBLY									
FIG 12 – CYLINDERS HEAD ASSEMBLY									
1	PAFZZ	PAOZZ			97947	272-00003	NUT M8 X 1.25 – 6H	2	
2	XDFZZ	XB			44940	186-6115	EYE,LIFTING	1	
3	PAFZZ	PAOZZ			44940	186-6106	BOLT,MACHINE	2	
4	PAFZZ	PAOZZ			44940	186-6114	WASHER,FLAT	4	
5	PAFZZ	PAOZZ			44940	186-6105	BOLT,MACHINE	2	
6	PAFFF	PAOOO			44940	186-6084	CYLINDER HEAD,DIESEL	1	
7	PAFZZ	PAOZZ			57386	04100253	.LOCK,VALVE SPRING	4	
8	PAFZZ	PAOZZ			44940	186-6090	.RETAINER,HELICAL	4	
9	PAFZZ	PAOZZ			44940	186-6089	.SPRING,HELICAL,COMP	4	
10	PAFZZ	PAOZZ			44940	186-6088	.SEAT,HELICAL COMPRE	4	
11	PAFZZ	PAOZZ			44940	186-6087	.VALVE,POPPET,ENGINE EXHAUST	2	
12	PAFZZ	PAOZZ			44940	186-6086	.VALVE,POPPET,ENGINE INTAKE	2	
13	PAFZZ	PAOZZ			44940	186-6257	.SEAL,PLAIN PART OF KIT P/N 186-6210 PART OF KIT P/N 186-6212	4	
14	PAFZZ	PAOZZ			44940	186-6092	..GUIDE,VALVE STEM	4	
15	PAFZZ	PAOZZ			15434	C0800205 200	.SCREW,CAP,HEXAGON M8 X 1.25 – 12 (8.8)	1	
16	PAFZA	PAOZZ			24439	616-01608	.WASHER,FLAT .064 THK,319 ID, COPPER	1	
17	KFFZZ	KF			44940	186-6102	SEAL,PUSH ROD PART OF KIT P/N 186-6210 PART OF KIT P/N 186-6212	4	
18	PAFZZ	PAOZZ			44940	186-6108	GASKET 1.35 MM THK	1	
18	PAFZZ	PAOZZ			44940	186-6109	GASKET 1.47 MM THK	1	
18	PAFZZ	PAOZZ			44940	186-6110	GASKET 1.60 MM THK	1	
19	KFFZZ	KF			44940	186-6101	WASHER,FLAT PART OF KIT P/N 186-6210 PART OF KIT P/N 186-6212	4	
20	XDFZZ	XB			44940	186-6099	TUBE,PUSHROD	4	
21	PAFZZ	PAOZZ			97947	201-30261	GROMMET,NONMETALLIC PART OF KIT P/N 186-6210 PART OF KIT P/N 186-6212	4	
22	PAFZZ	PAOZZ			44940	186-6103	TAPPET,ENGINE,POPPET	4	

ARMY TM9-2815-252-24P
AIR FORCE TO 38G1-92-4

(1)	(2) SMR CODE				(3)	(4)	(5)	(6)	(7)
ITEM NO.	a ARMY	b AIR FORCE	c. NAVY	d USMC.	FSCM	PART NUMBER.	DESCRIPTION AND USABLE ON CODE (UOC)	QTY	USMC QTY PER EQUIP
23	XDFZZ PAFZZ	XB PAOZZ			44940 44940	186-6255 186-6210	TUBE,BREATHER GASKET SET,HEAD GASKET,INLET.....(2) 1-5 GASKET,EXHAUST . (2) 2-3 GASKET . (1) 3-4 GASKET (1) 3-12 GASKET (1) 3-14 PACKING PREFORMED.....(2) 3-15- WASHER,FLAT (2) 5-13 PACKING PREFORMED (4) 11-2 GASKET (2) 11-4 SEAL,VALVE STEM (4) 12-13 SEAL,PUSH ROD TUBE (4) 12-17 WASHER,FLAT (4) 12-19 SEAL,PUSH ROD (4) 12-21	2 1	

END OF FIGURE

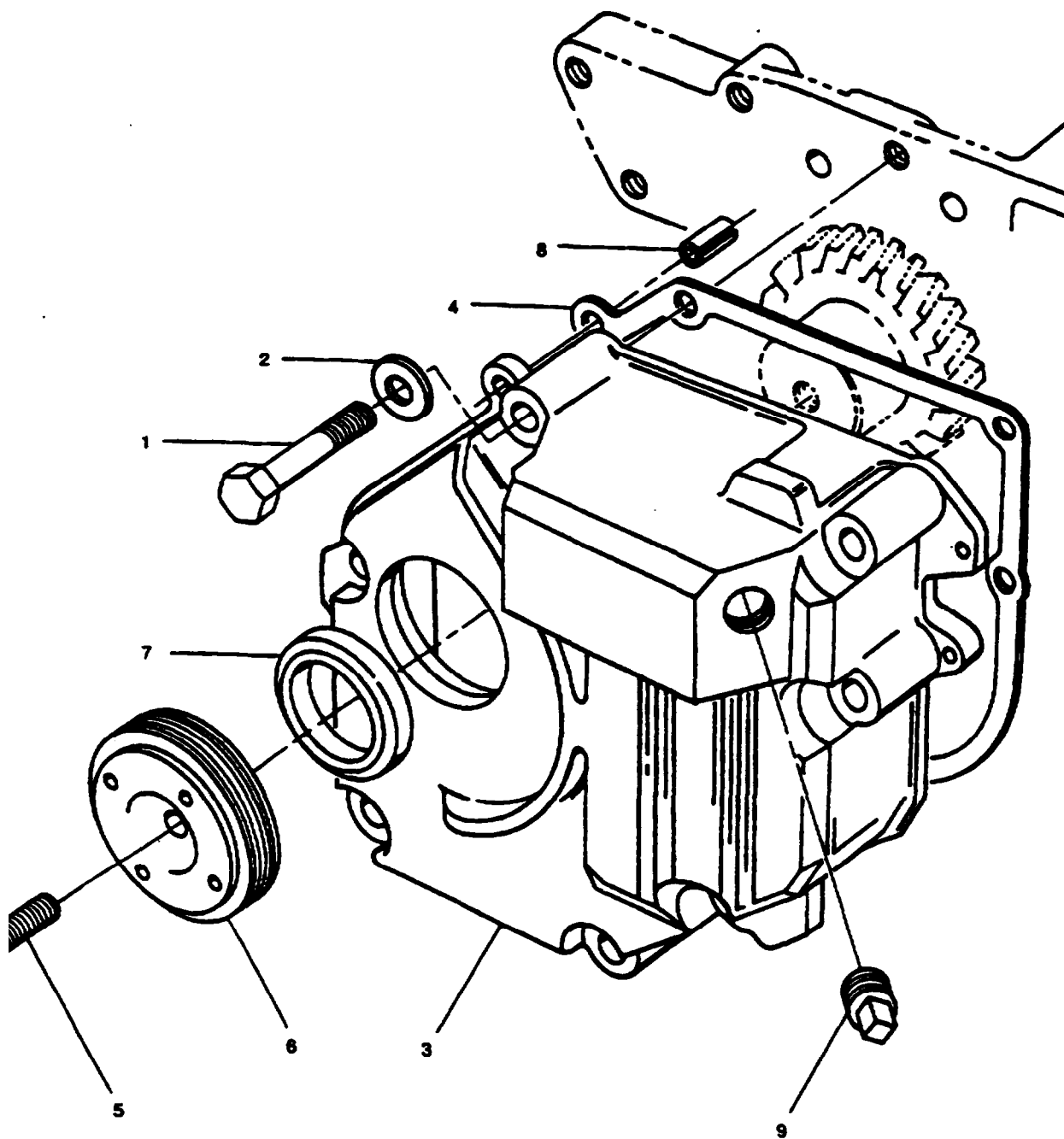


Figure 13. Gear End Cover

(1)	(2) SMR CODE				(3)	(4)	(5)	(6)	(7)
ITEM NO.	a ARMY	b AIR FORCE	c. NAVY	d USMC.	FSCM	PART NUMBER.	DESCRIPTION AND USABLE ON CODE (UOC)	QTY	USMC QTY PER EQUIP
GROUP 07 – ENGINE SUBASSEMBLY									
FIG. 13 GEAR END COVER									
1	PAFZZ	PAOZZ			44940	186-6150	SCREW,MACHINE	7	
2	PAFZZ	PAOZZ			44940	186-6150	WASHER,FLAT	7	
3	XDFZZ	XB			44940	186-6148	COVER,GEAR	1	
4	PAFZZ	PAOZZ			44940	186-6147	GASKET	1	
							PART OF KIT P/N 186-6212		
5	PBFZZ	PBOZZ			44940	186-6198	SCREW,CAP,HEXAGON	1	
6	XDFZZ	XB			44940	186-6195	PULLEY,CRANKSHAFT	1	
7	PAFZZ	PAOZZ			44940	186-6148	SEAL,PLAIN ENCASED	1	
							PART OF KIT P/N 186-6212		
8	XDFZZ	XB			44940	186-6149	DOWEL	2	
9	PAOZZ	PAOZZ			81348	WW-P-471A ASBCC	PLUG,PIPE	1	
END OF FIGURE									

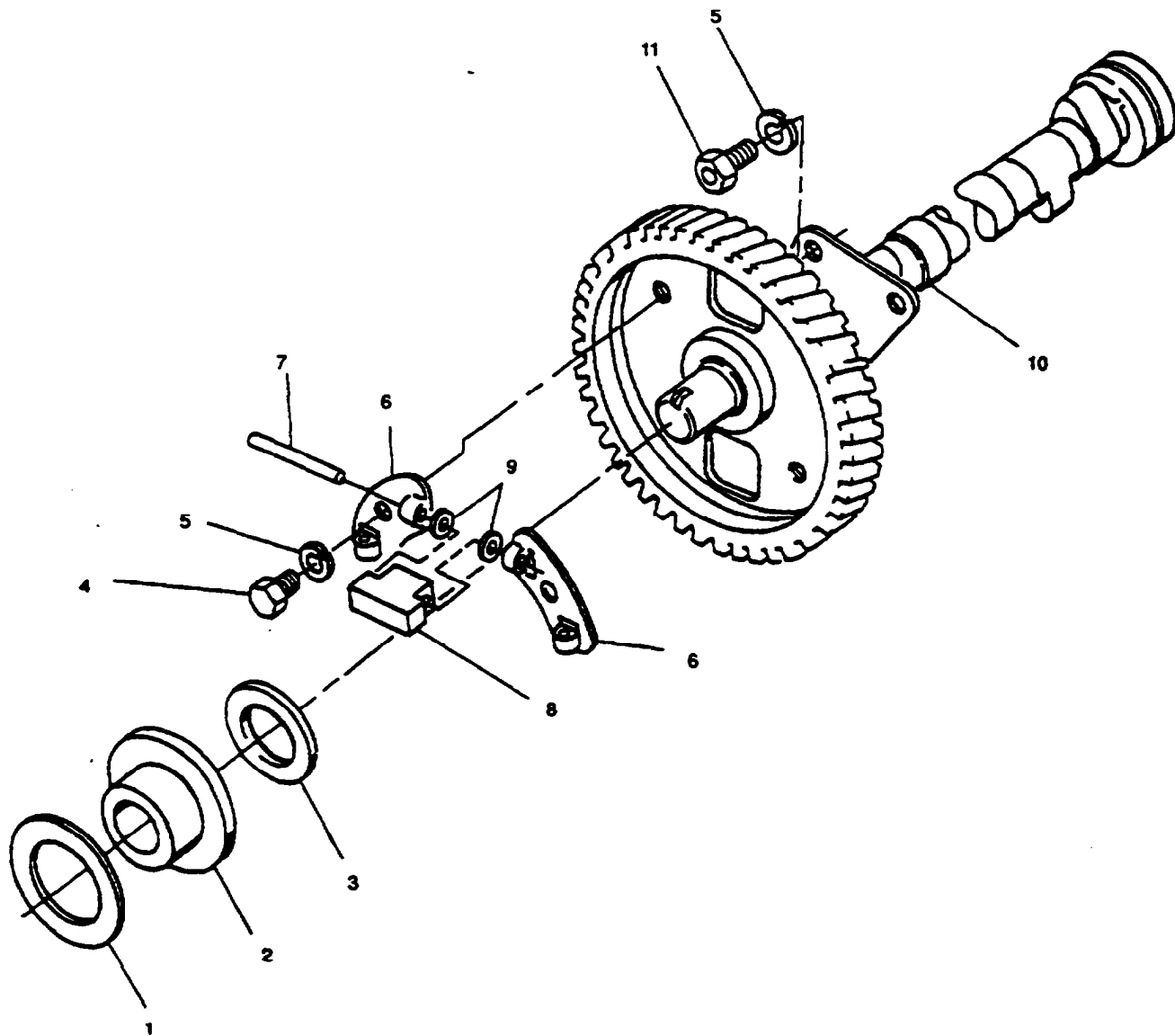


Figure 14. Camshaft Assembly

(1)	(2) SMR CODE				(3)	(4)	(5)	(6)	(7)
ITEM NO.	a ARMY	b AIR FORCE	c. NAVY	d USMC.	FSCM	PART NUMBER.	DESCRIPTION AND USABLE ON CODE (UOC)	QTY	USMC QTY PER EQUIP
							GROUP 07 – ENGINE SUBASSEMBLY		
							FIG. 15 –CAMSHAFT ASSEMBLY		
1	PAFZZ	PAOZZ			44940	186-6045	WASHER,FLAT	1	
2	PAFZZ	PAOZZ			44940	186-6044	BUSHING,SLEEVE	1	
3	PAFZZ	PAOZZ			44940	186-6268	BEARING,WASHER,THRUST	1	
4	PAFZZ	PAOZZ			15526	933-M6X8	SCREW,CAP,HEXAGON M6 X 1.0 – 6G X 8	4	
5	PAFZZ	PAOZZ			44940	186-6038	WASHER,LOCK	6	
6	PAFZZ	PAOZZ			44940	186-6042	PLATE,CLIP RETAINER	4	
7	PAFZZ	PAOZZ			44940	186-6040	PIN,STRAIGHT HEADLE	2	
8	PAFZZ	PAOZZ			44940	186-6039	WEIGHT,COUNTERBALANCE	4	
9	PAFZZ	PAOZZ			44940	186-6143	SHIM	8	
10	PAHZZ	PAOZZ			44940	186-6035	CAMSHAFT,ENGINE GEAR WITH THRUST PLATE	1	
11	PAHZZ	PAOZZ			15526	933-M6X12	SCREW,CAP,HEXAGON	2	
							END OF FIGURE		

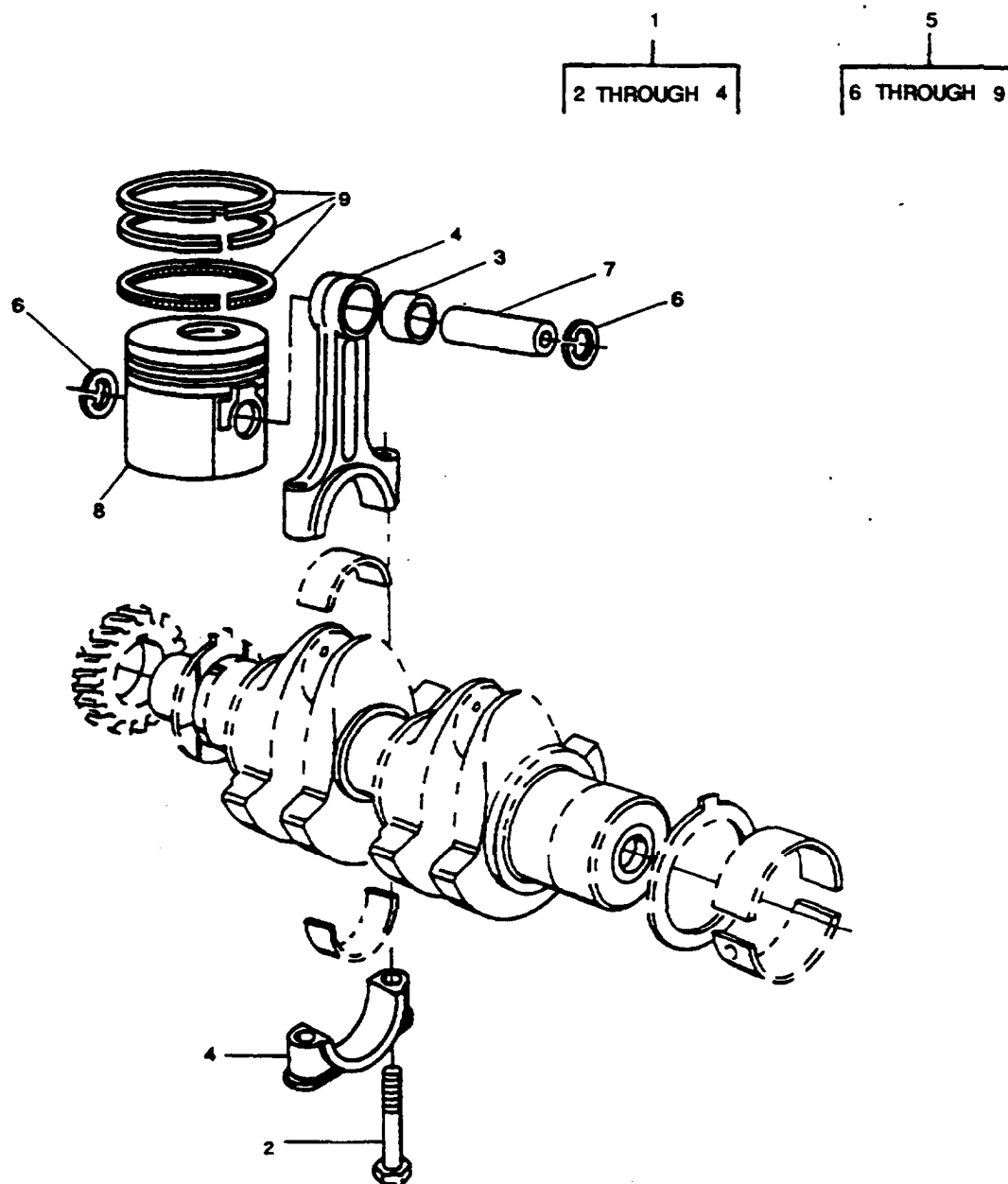


Figure 15. Piston and Connecting Rod Assemblies

(1)	(2) SMR CODE				(3)	(4)	(5)	(6)	(7)
ITEM NO.	a ARMY	b AIR FORCE	c. NAVY	d USMC.	FSCM	PART NUMBER.	DESCRIPTION AND USABLE ON CODE (UOC)	QTY	USMC QTY PER EQUIP
							GROUP 07 – ENGINE SUBASSEMBLY		
							FIG 15- PISTON AND CONNECTING ROD ASSEMBLY		
1	PAHHH	PAOOO			44940	186-6078	CONNECTING ROD,PISTON	2	
2	PAHZZ	PAOZZ			44940	186-6079	.BOLT,MACHINE	2	
3	PAHZZ	PAOZZ			44940	186-6080	.BUSHING,SLEEVE	1	
4	XAHZZ	XA			44940	186-6078-01	.CONNECTING ROD	1	
5	PAHHH	PAOOO			44940	186-6067	PISTON,INTERNAL COMB	2	
5	XDHZZ	XB			44940	186-6068	STANDARD PISTON ASSY	2	
5	XDHZZ	XB			44940	186-6069	OVERSIZE .25 MM PISTON ASSY	2	
5	XDHZZ	XB			44940	186-6070	OVERSIZE .50 MM PISTON ASSY	2	
5	XDHZZ	XB			44940	186-6071	OVERSIZE .75 MM PISTON ASSY	2	
6	PAHZZ	PAOZZ			44940	186-6072	OVERSIZE 1.0 MM .RING,RETAINING	2	
7	XAHZZ	XA			44940	186-6067-02	.PIN,WRIST	1	
8	XAHZZ	XA			44940	186-6067-01	.PISTON	1	
8	XAHZZ	XA			44940	186-6068-01	STANDARD .PISTON	1	
8	XAHZZ	XA			44940	186-6069-01	OVERSIZE .25 MM .PISTON	1	
8	XAHZZ	XA			44940	186-6070-01	OVERSIDE .50 MM PISTON	1	
8	XAHZZ	XA			44940	186-6071-01	OVERSIDE .75 MM PISTON	1	
9	PAHZZ	PAOZZ			44940	186-6073	OVERSIDE 1.0 MM RING SET,PISTON	1	
9	XAHZZ	XA			44940	186-6074	STANDARD RING SET,PISTON	1	
9	XAHZZ	XA			44940	186-6075	OVERSIZE .25 MM RING SET,PISTON	1	
9	XAHZZ	XA			44940	186-6076	OVERSIDE .50 MM RING SET,PISTON	1	
9	XAHZZ	XA			44940	186-6077	OVERSIDE .75 MM RING SET PISTON	1	
							OVERSIDE 1.0 MM		

END OF FIGURE

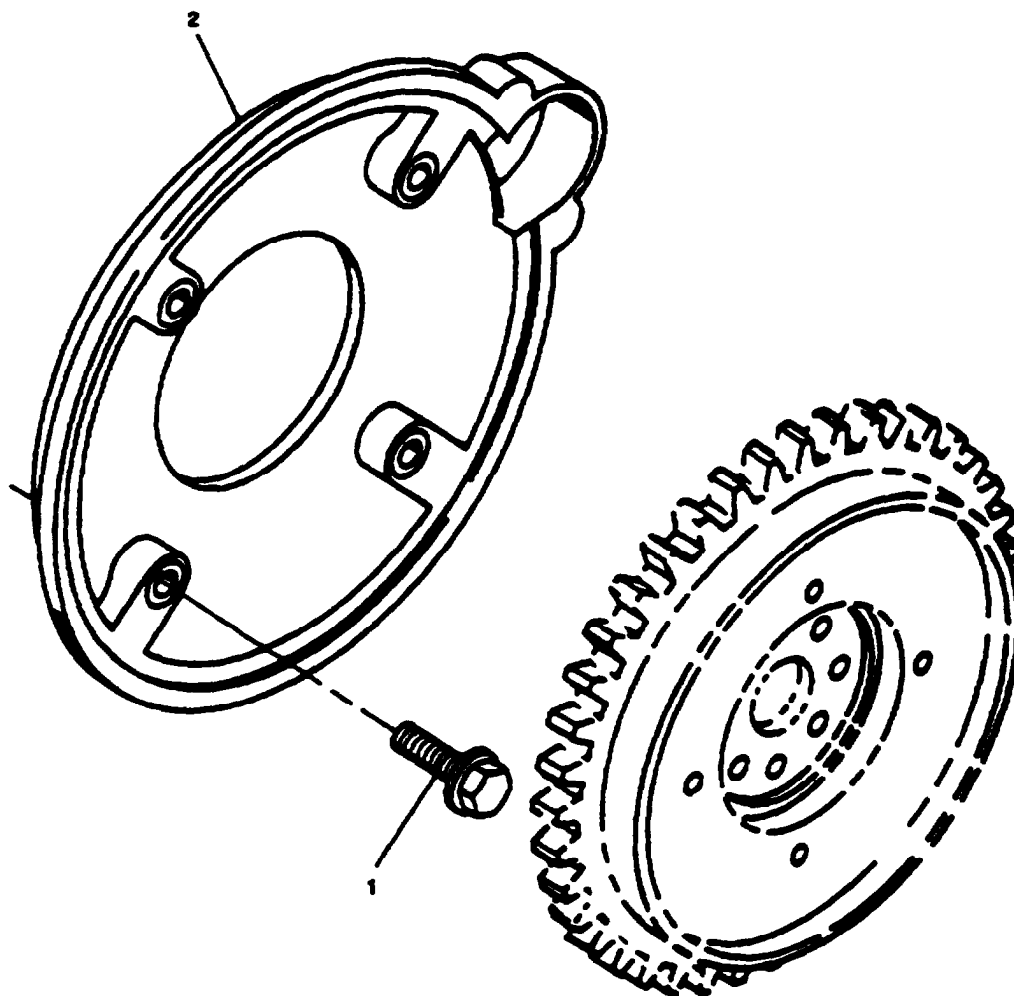


Figure 16. Flywheel Housing

(1)	(2) SMR CODE				(3)	(4)	(5)	(6)	(7)
ITEM NO.	a ARMY	b AIR FORCE	c. NAVY	d USMC.	FSCM	PART NUMBER.	DESCRIPTION AND USABLE ON CODE (UOC)	QTY	USMC QTY PER EQUIP
							GROUP 07 – ENGINE SUBASSEMBLY		
							FIG 16 – FLYWHEEL HOUSING		
1	PAHZZ	PAOZZ			44940	186-6198	SCREW.MACHINE	4	
2	XDHZZ	XB			44940	231-0307	HOUSING,FLYWHEEL	1	
							END OF FIGURE		

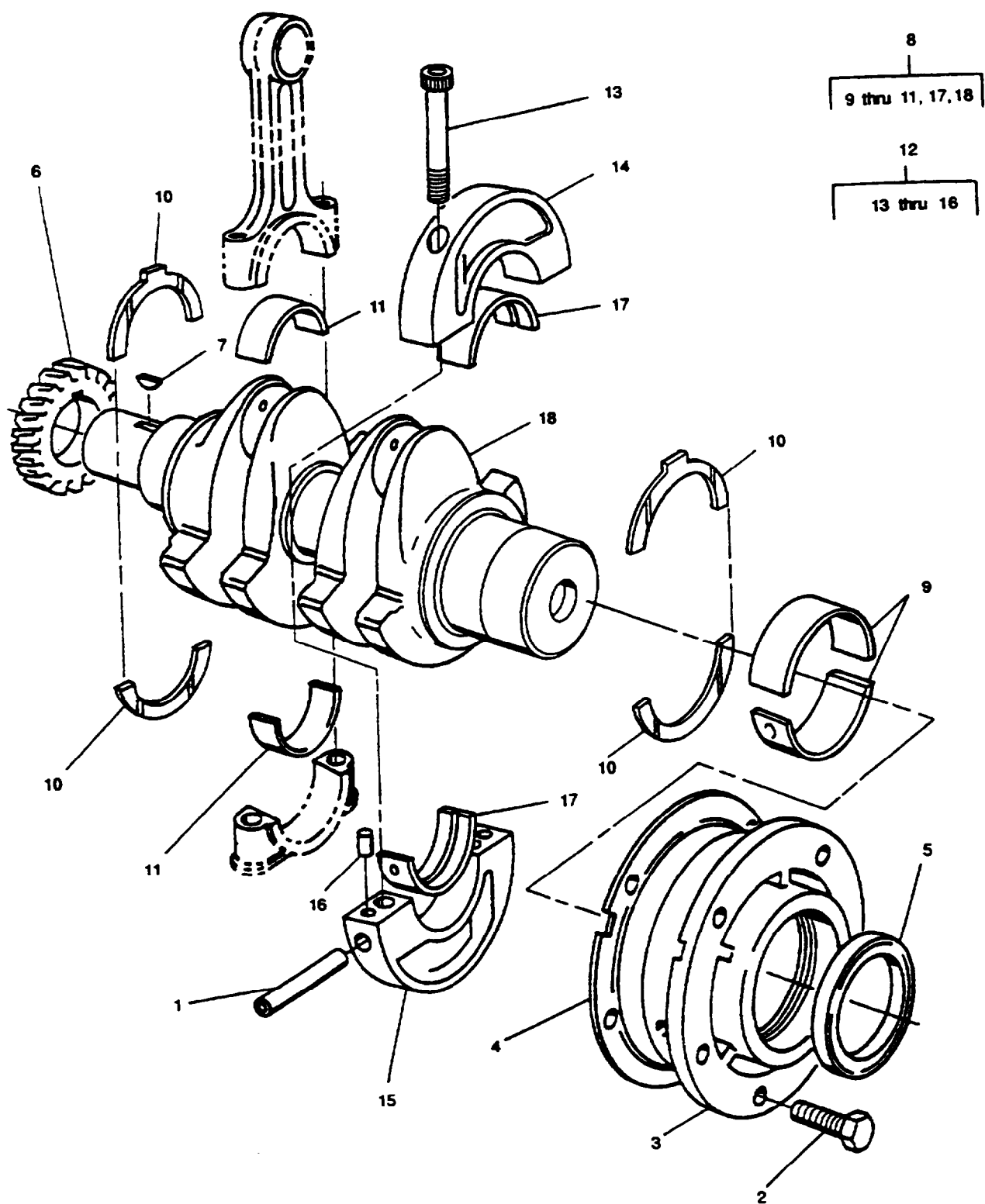


Figure 17. Crankshaft Assembly

(1)	(2) SMR CODE				(3)	(4)	(5)	(6)	(7)
ITEM NO.	a ARMY	b AIR FORCE	c. NAVY	d USMC.	FSCM	PART NUMBER.	DESCRIPTION AND USABLE ON CODE (UOC)	QTY	USMC QTY PER EQUIP
							GROUP 07 – ENGINE SUBASSEMBLY		
							FIG 17 – CRANKSHAFT ASSEMBLY		
1	PAHZZ	PAOZZ			44940	186-6057	PIN,STRAIGHT,HEADLE	1	
2	PAHZZ	PAOZZ			97947	272-00039	BOLT,MACHINE M8 X 1.25 X 20	5	
3	XDHZZ	XB			44940	186-6058	HOUSING,MAIN BRG	1	
4	PAHZZ	PAOZZ			44940	186-6065	SPACER,PLATE .38 MM THK	1	
4	PAHZZ	PAOZZ			44940	186-6066	PART OF KIT P/N 186-6212 SPACER,PLATE .5 MM THK	1	
5	PAHZZ	PAOZZ			44940	186-6063	PART OF KIT P/N 186-6212 RETAINER,PACKING	1	
6	PBHZZ	PBOZZ			44940	186-6054	PART OF KIT P/N 186-6212 GEAR,HELICAL	1	
7	PAHZZ	PAOZZ			44940	186-6055	KEY,WOODRUFF	1	
8	PBHZZ	PBOZZ			44940	186-6046	CRANKSHAFT KIT,ENG	1	
9	PAHZZ	PAOZZ			44940	186-6060	.BEARING,ROLLER	1	
9	XDHZZ	XB			44940	186-6061	.BEARING,HALF SLEEVE UNDERSIZE .25 MM	1	
9	XDHZZ	XB			44940	186-6062	.BEARING,HALF SLEEVE UNDERSIZE .50 MM	1	
10	PAHZZ	PAOZZ			44940	186-6056	.BEARING,WASHER,THRU	1	
11	PAHZZ	PAOZZ			44940	186-6081	.BEARING,BALL STANDARD	2	
11	XDHZZ	XB			44940	186-6082	.BEARING,PLAIN,ROD UNDERSIZE .25 MM	2	
11	XDHZZ	XB			44940	186-6083	.BEARING,PLAIN,ROD UNDERSIZE .50 MM	2	
12	XDHHH	XB			44940	186-6048	HOUSING ASSY	1	
13	PAHZZ	PAOZZ			44940	186-6050	.SCREW,CAP,HEXAGON	2	
14	XAHZZ	XA			44940	186-6048-01	.HOUSING,UPPER	1	
15	XAHZZ	XA			44940	186-6048-02	.HOUSING,LOWER	1	
16	XDHZZ	XB			44940	186-6049	.PIN,STRAIGHT	2	
17	PAHZZ	PAOZZ			44940	186-6051	.BUSHING,BLANK STANDARD	1	
17	XDHZZ	XB			44940	186-6052	.BEARING,HALF SLEEVE UNDERSIZE .25 MM	1	
17	XDHZZ	XB			44940	186-6053	.BEARING,HALF SLEEVE UNDERSIZE .50 MM	1	

ARMY TM9-2815-252-24P
AIR FORCE TO 38G1-92-4

(1)	(2) SMR CODE				(3)	(4)	(5)	(6)	(7)
ITEM NO.	a ARMY	b AIR FORCE	c. NAVY	d USMC.	FSCM	PART NUMBER.	DESCRIPTION AND USABLE ON CODE (UOC)	QTY	USMC QTY PER EQUIP
18	XAHZZ	XA			44940	186-646-01	.CRANKSHAFT	1	
	PAHZZ	PAOZZ			44940	186-6212	GASKET SET,ENGINE GASKET,INLET GASKET,EXHAUST GASKET GASKET GASKET PACKING PREFORMED SEAL,NON- METALLIC WASHER,FLAT GASKET GASKET PACKING PREFORMED GASKET SEAL,VALVE STEM SEAL,PUSHROD WASHER,FLAT SEAL,PUSHROD GASKET SEAL OIL SHIM.MAIN BEARING, .38MM SHIM,MAIN BEARING, .50 MM SEAL,OIL	1	

END OF FIGURE

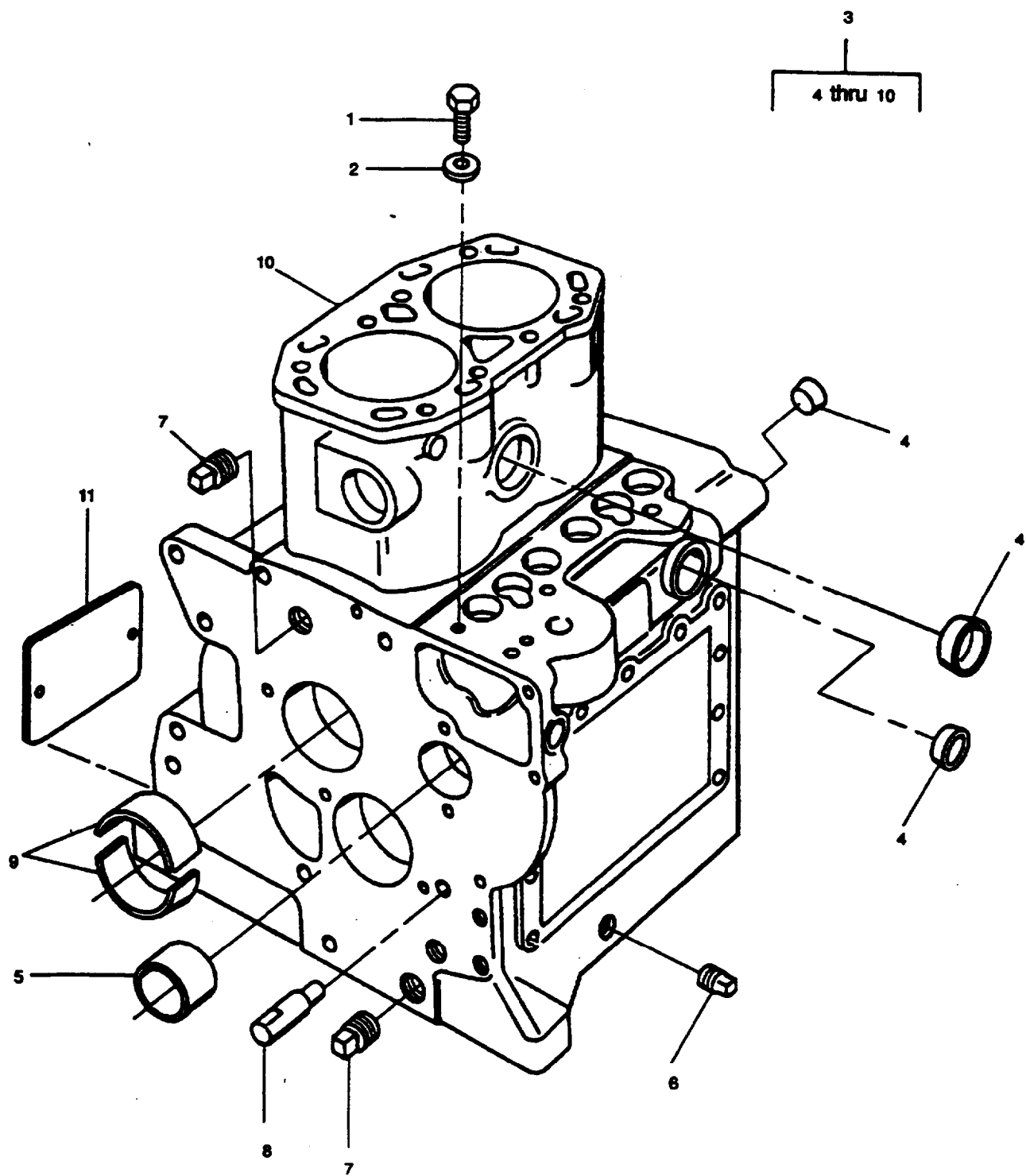


Figure 18. Crankcase Assembly

**ARMY TM 9-2815-252-24P
AIR FORCE TO 38G1-924**

(1)	SMR CODE				(3)	(4)	(5)	(6)	(7)
ITEM No.	8. ARMY	b. AIR FORCE	c. NAVY	d. USMC	FSCM	PART NUMBER	DESCRIPTION AND USABLE ON CODE (UOC)	OYT	USMC QTY PER EQUIP
							GROUP 07 - ENGINE SUBASSEMBY		
							FIG. 16 - CRANKCASE ASSEMBLY		
1	PAHZZ	PAOZZ			44940	186-6230	SCREW, CAP. HEXAGON M8X1.25X8	2	
2	PAHZZ	PAOZZ			24439	61601606	WASHER. FIAT COPPER	2	
3	PBHHH	PBOOO			44940	186-6000	ENGINE BLOCK ASSEMBLY	1	
4	PAFZZ	PAOZZ			44940	186-6002	.EXPANSION PLUG ASSORTMENT	1	
5	PAHZZ	PAOZZ			44940	186-6006	BUSHING, SLEEVE	1	
6	PAOZZ	PAOZZ			44440	505-0056	.PLUG, PIPE	1	
7	PAOZZ	PAOZZ			61346	WW-P471AAS BCC	.PLUG. PIPE	2	
6	PAFZZ	PAOZZ			44940	186-6008	.PIN. STRAIGHT HEADLESS	2	
9	PAHZZ	PAOZZ			44940	186-6003	-BEARING. HALF, SLEEVE STANDARD MAIN BEARING	1	
9	XDHZZ	XB			44940	186-6004	-BEARING, HALF SLEEVE UNDERSIZE .25 MM	1	
9	XDHZZ	XB			44940	186-6005	.BEARING, HALF, SLEEVE UNDERSIZE 50 MM	1	
10	XAHZZ	XA			44940	186-6000-01	.BLOCK, ENGINE	1	
11	XDHZZ	XB			44940	186-6229	PLATE, IDENTIFICATION PLATE SELF-ADHESIVE	1	
							END OF FIGURE		

(1)	(2)				(3)	(4)	(5)	(6)	(7)
ITEM	1.	SMR	CODE	C.	d.	FSCM	PART	DESCRIPTION AND	USMC
No.	ARMY	AIR	FORCE	NAVY	USMC		NUMBER	USABLE ON CODE (UOC)	QTY
									PER
									EQUIP

GROUP 08-BULK

FIG. BULK

PAOZZ					44940	503-1052		HOSE, NONMETALLIC	V
								END OF FIGURE	

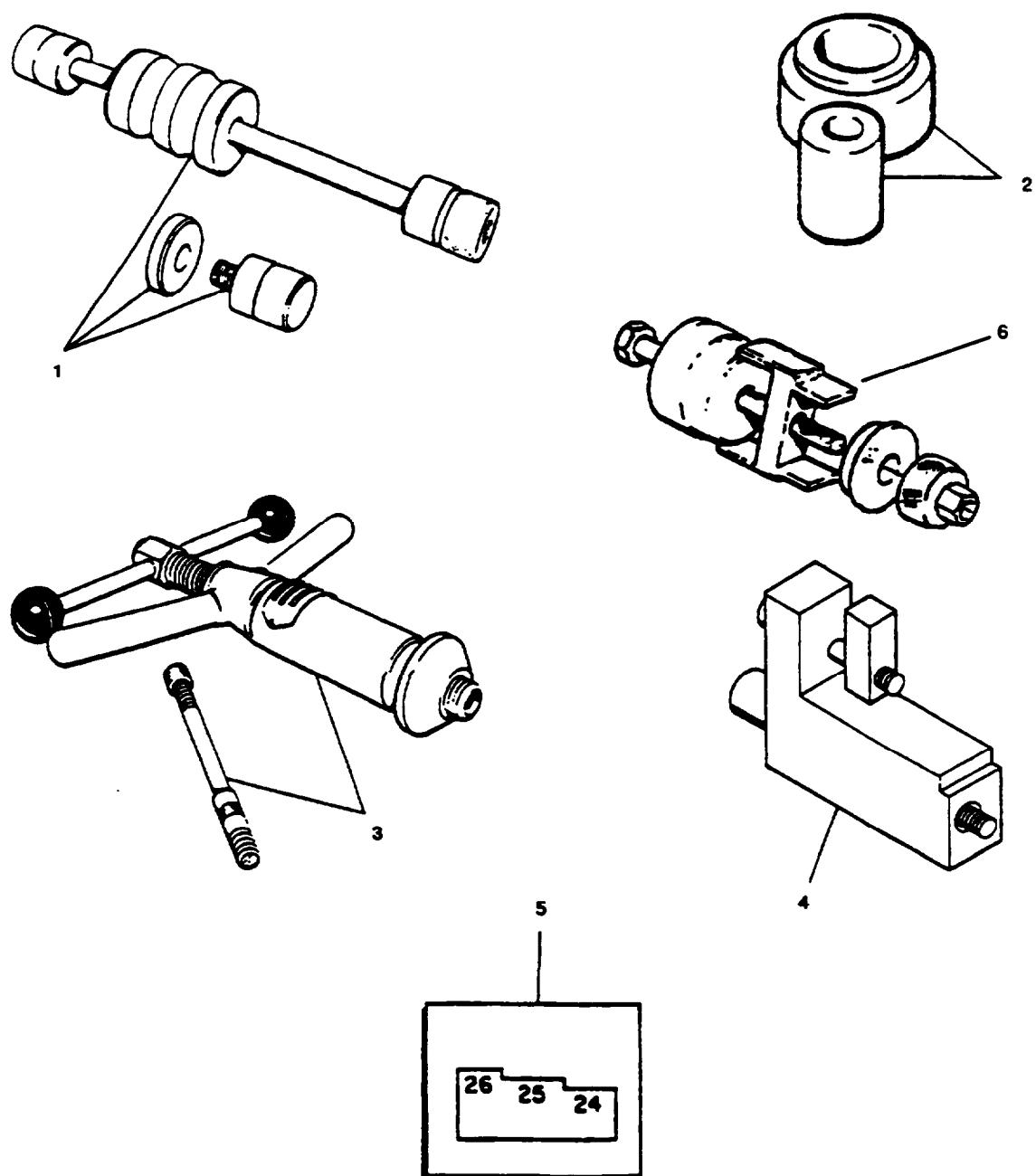


Figure 19. Special Tools

ARMY TM 9-2815-252-24P
AIR FORCE TO 38G1-924

(1) ITEM No.	(2) SMR CODE				(3) FSCM	(4) PART NUMBER	(5) DESCRIPTION AND USBALE ON CODE(UOC)	(6) QTY	(7) USMC E Q U I P
	a.	b.	c.	d.					
	ARMY FORCE NAVY USMC								
							GROUP 09-SPECIAL TOOLS		
							FIG.19-SPECIAL TOOLS		
1	PEHZZ	PEHZ			97947	317-50106	INSERTER AND REMOVE USED TO REMOVE/INSTALL CAMSHAFT BUSHING	1	1
2	PEFZZ	PEFU			97947	317-50108	PULLER,MECHANICAL USED TO INSTALL VALVE GUIDES	1	1
3	PEFZZ	PEFZZ			97947	317-50033	PULLER.MECHANICAL USED TO REMOVE/INSTALL VALVE GUIDES.	1	1
4	PEFZZ	PEFZZ			97947	317-50114	GAGE, RACK SETTING USED TO ADJUST FUEL PUMP RACK	1	1
5	PEFZZ	PEFZZ			97947	317-50115	GAGE,GOVERNOR SET USED TO SET GOVERNOR STOPS.	1	1
6	PEHZZ	PEHZZ			97947	317-50111	INSERTER AND REMOVE REMOVE/INSTALL MAIN BEARINGS.	1	
							END OF FIGURE		

SECTION IV

CROSS REFERENCE INDEXES
NATIONAL STOCK NUMBER INDEX

STOCK NUMBER	FIG.	ITEM	STOCK NUMBER	FIG.	ITEM
291-00-099-5467	4		2920-01-224-8389	10	16
4730-00-187-4202	13	9	3020-01-225-6988	10	21
	18	7	5360-01-227-3195	10	13
9150-00-1896727	BULK		5360-01-227-6302	10	20
9150-00-402-2372	BULK		2920-01-228-3708	10	22
5975-00-727-5153	5	6	3110-01-236-6408	10*	
4730-00-833-7983	18	6	5310-01-276-6608	10	6
5310-01-018-5472	12	16	5306-01-284-3794	3	1
	18	2	4730-01-303-0840	4	12
5310-01-060-9104	4	28	5306-01-314-6734	9	26
5305-01-061-4892	4	27	5310-01-321-3478	10	2
5310-01-085-1019	3	2	5310-01-321-4088	10	4
5330-01-085-3102	7	2	5310-01-333-8085	9	6
5310-01-086-1527	3	8		9	36
	7	3	5306-01-335-6157	7	12
	12	1	5325-01-336-5227	12	21
5330-01-087-7373	11	2	5306-01-338-0211	17	2
2815-01-101-2431	12	7	5306-01-338-0214	3	6
2910-01-110-8184	4	15	2910-01-355-6028	5	12
2815-01-139-4010	4		2815-01-355-7671	14	10
5310-01-158-3188	4	14	2815-01-355-7800	18	3
5305-01-158-3207	12	15	2815-01-355-7801	12	6
5305-01-163-5075	14	4	5340-01-356-6147	4	8
5305-01-166-0616	9	7	5306-01-356-7105	1	2
	9	39	5306-01-356-7106	5	10
9150-01-1784725	BULK		5306-01-356-7107	11	7
9150-01-1784726	BULK		5310-01-366-7108	2	1
5305-01-178-7349	4	13		7	16
	8	2	5310-01-356-7109	10	3
5305-01-184-1937	14	11	5310-01-356-7110	6	6
5330-01-207-7350	3	15	5330-01-356-7136	1	5
5305-01-212-3227	10	5	5330-01-356-7137	2	3
5306-01-212-3228	10	10	5330-01-356-7138	11	4
5305-01-212-3371	10	8	5310-01-356-7153	6	7
2920-01-212-4008	10	14	5330-01-356-7173	4	9
5945-01-213-9233	10	9	5310-01-356-6341	11	1
2920-01-214-6655	10	15	5305-01-366-9468	6	4
5340-01-215-2927	10	11	5305-01-356-9469	6*	
3110-01-218-0623	10*		5305-01-367-0896	10	1
2920-01-219-8200	10	7	2815-01-357-5448	15	1
5340-01-223-8726	10	19	4730-01-357-8705	5	8
2920-01-223-8762	10	24	4730-01-357-8706	5	4
2520-01-223-8780	10	23	2815-01-357-8803	15	5
5977-01-224-2917	10	12	5315-01-358-3737	14	7
2920-01-224-6246	10	18	5360-01-358-3755	12	9
2920-01-224-6247	10	17	5310-01-358-3905	11	5

SECTION IV

CROSS REFERENCE INDEXES
NATIONAL STOCK NUMBER INDEX

STOCK NUMBER	FIG.	ITEM	STOCK NUMBER	FIG.	ITEM
5310-01-356-4726	14	5	5365-01-360-2911	9	5
5330-01-356-4739	17	5		9	20
5330-01-356-5435	3	14		14	9
5330-01-368-5436	12	18	5365-01-360-2925	4	4
5330-01-368-5437	12	18	2815-01-360-3221	12	11
5330-01-358-5438	13	4	5330-01-360-4778	3	12
5310-01-358-5544	4	1	5305-01-360-5280	16	1
5330-01-358-5554	13	7	5330-01-360-5943	12	
5330-01-358-5556	12	18	4710-01-360-6304	4	11
5330-01-356-5557	7	6	2915-01-360-6943	4	3
5330-01-358-5560	3	4	5310-01-360-7885	14	1
4730-01-358-8994	4	10	6685-01-360-9653	3	5
3120-01-358-7345	14	3	2815-01-361-0770	11	9
3120-01-358-9596	18	5	2940-01-361-5161	7	10
3110-01-359-0114	17	9	5330-01-361-5286	12	13
5306-01-359-0121	12	3	5330-01-361-5288	9	30
5306-01-359-0122	12	5		9	46
5365-01-359-0172	15	6	5330-01-361-5290	7	15
5307-01-3590182	7	7	5310-01-361-5469	6	3
5305-01-359-0185	9	32	5310-01-361-5470	12	4
5305-01-369-0188	9	35	5310-01-361-5471	9	27
5305-01-359-0189	17	13		9	40
5365-01-359-0205	17	17	5305-01-361-6562	13	5
5305-01-359-1329	9	34	5360-01-361-6954	9	38
5305-01-359-1330	18	1	5307-01-361-6998	2	4
5330-01-359-1499	7	9	2815-01-361-7711	12	12
5306-01-359-4621	15	2	2815-01-361-7737	4	7
3120-01-369-4681	14	2	5340-01-361-7901	9	17
5307-01-359-4688	4	5	4820-01-3618099	8	5
2815-01-359-4955	8	4	3120-01-3618381	18	9
2930-01-359-4992	3	9	3020-01-362-1817	17	6
3120-01-359-6762	15	3	3040-01-362-3508	14	8
3120-01-359-7002	9	31	2815-01-363-2256	15	9
	9	47	2815-01-364-5771	17	8
5307-01-369-7973	3	17	5315-01-369-7214	9	50
4520-01-359-8114	1	1	3110-01-369-8672	17	11
2815-01-359-6471	12	14	5340-01-369-9487	14	6
2815-01-359-8473	12	22	5305-01-370-0269	9	19
5305-01-359-8790	3	7	5315-01-370-5550	18	8
5305-01-359-8791	13	1	5340-01-374-2403	18	4
5315-01-360-1643	9	18	5307-01-378-7028	7	17
5360-01-360-1952	9	1	3040-01-378-8302	4	6
5360-01-360-1953	9	2	5365-01-381-2361	9	4
5360-01-360-1954	9	9	5365-01-381-5165	17	4
5360-01-360-1956	9	41	5365-01-381-6431	17	4
5310-01-360-1982	5	13	5330-01-381-9950	17	

SECTION IV

CROSS REFERENCE INDEXES
NATIONAL STOCK NUMBER INDEX

STOCK NUMBER	FIG.	ITEM	STOCK NUMBER	FIG.	ITEM
5310-01-382-7683	3	18			
5310-01-383-1585	5	9			
5310-01-383-1608	7	4			
5310-01-383-2019	1	3			
	7	13			
	8	3			
	13	2			
5315-01-383-3444	17	7			
5315-01-383-3448	17	16			
5365-01-383-8708	11	8			
3120-01-383-9112	9	22			
5340-01-383-9379	3	10			
5315-01-383-9717	17	1			
5340-01-384-2996	12	10			
5120-01-384-6757	19	2			
5120-01-384-6759	19	1			
5120-01-384-6762	19	3			
5120-01-384-4764	19	6			
5210-01-384-4634	19	4			
5340-01-384-9959	12	8			
4730-01-385-10078	3	16			
4730-01-385-1094	7	11			
4730-01-385-5915	3	11			
5210-01-392-5746	19	5			
3120-01-396-8376	17	10			
4720-01-411-4003	BULK	1			

ARMY TM 9-2815-252-24P
AIR FORCE TO 38G1-92-4

SECTION IV

CROSS REFERENCE INDEXES
PART NUMBER INDEX

FSCM	PART NUMBER	STOCK NUMBER	FIG.	ITEM
97947	000-06477	4720-01-411-4003	BULK	1
97947	027-00082	5310-01-085-1019	3	2
57386	04100253	2815-01-101-2431	12	7
56161	10503605	5305-01-178-7349	4	13
			8	2
56161	10504502	5305-01-166-0616	9	7
			9	39
56161	10526115	5306-01-284-3794	3	1
15526	127-86	5310-01-158-3188	4	14
44940	149-2379	- - -	4	29
44940	186-6000	2815-01-355-7800	18	3
44940	186-6000-01	- - -	18	10
44940	186-6002	5340-01-374-2403	18	4
44940	186-6003	3120-01-361-8381	18	9
44940	186-6004	- - -	18	9
44940	186-6005	- - -	18	9
44940	186-6006	3120-01-358-9596	18	5
44940	186-6008	5315-01-370-5550	18	8
44940	186-6009	- - -	7	14
44940	186-6010	5330-01-361-5290	7	15
44940	186-6015	5310-01-383-2019	1	3
			7	13
			8	3
			13	2
44940	186-6016	- - -	7	5
44940	186-6017	5330-01-358-5557	7	6
44940	186-6018	5307-01-359-0182	7	7
44940	186-6019	5310-01-383-1608	7	4
44940	186-6021	4730-01-385-1094	7	11
44940	186-6023	- - -	7	8
44940	186-6024	5330-01-359-1499	7	9
44940	186-6025	2940-01-361-5161	7	10
44940	186-6026	- - -	7	1
44940	186-6030	2815-01-359-4955	8	4
44940	186-6031	4820-01-361-8099	8	5
44940	166-6032	- - -	8	1
44940	186-6035	2815-01-355-7677	14	10
44940	186-6038	5310-01-358-4726	14	5
44940	186-6039	3040-01-362-3508	14	8
44940	186-6040	5315-01-358-3737	14	7
44940	186-6042	5340-01-369-9487	14	6
44940	186-6044	3120-01-359-4681	14	2
44940	186-6045	5310-01-360-7885	14	1
44940	186-6046	2815-01-364-5771	17	8

SECTION IV

CROSS REFERENCE INDEXES
PART NUMBER INDEX

FSCM	PART NUMBER	STOCK NUMBER	FIG.	ITEM
44940	186-6046-01	- - -	17	18
44940	186-6048	- - -	17	12
44940	186-6048-01	- - -	17	14
44940	186-6048-02		17	15
44940	186-6049	5315-01-383-3448	17	16
44940	186-6050	5305-01-359-0189	17	13
44940	186-6051	5365-01-359-0205	17	17
44940	186-6052	- - -	17	17
44940	186-6053	- - -	17	17
44940	186-6054	3020-01-362-1817	17	6
44940	186-6055	5315-01-383-3444	17	7
44940	186-6056	3120-01-396-8376	17	10
44940	186-6057	5315-01-383-9717	17	1
44940	186-6058		17	3
44940	186-6060	3110-01-359-0114	17	9
44940	186-6061	- - -	17	9
44940	186-6062		17	9
44940	186-6063	5330-01-358-4739	17	5
44940	186-8065	5365-01-381-6431	17	4
44940	186-6066	5365-01-381-5165	17	4
44940	186-6087	2815-01-357-8803	15	5
44940	186-6067-01	- - -	15	8
44940	186-6067-02	- - -	15	6
44940	186-6068	- - -	15	5
44940	186-6068-01	- - -	15	8
44940	186-6089	- - -	15	5
44940	186-6069-01	- - -	15	8
44940	186-6070	- - -	15	5
44940	186-6070-01	- - -	15	8
44940	186-6071	- - -	15	5
44940	186-6071-01	- - -	15	8
44940	186-6072	5365-01-359-0172	15	6
44940	186-6073	2815-01-363-2256	15	9
44940	186-6074	- - -	15	9
44940	186-6075	- - -	15	9
44940	186-6076	- - -	15	9
44940	186-6077	- - -	15	9
44940	186-6078	2815-01-357-5448	15	1
44940	18-6078-01	- - -	15	4
44940	186-6079	5306-01-359-4621	15	2
44940	186-6080	3120-01-359-6762	15	3
44940	186-8081	3110-01-369-8672	17	11
44940	186-6082	- - -	17	11
44940	186-6083	- - -	17	11

ARMY TM 9-2815-252-24P
AIR FORCE TO 38G1-924

SECTION IV

CROSS REFERENCE INDEXES
PART NUMBER INDEX

FSCM	PART NUMBER	STOCK NUMBER	FIG.	ITEM
44940	186-6084	2815-01-355-7801	12	6
44940	186-6086	2815-01-361-7711	12	12
44940	186-6087	2815-01-360-3221	12	11
44940	186-6088	5340-01-384-2996	12	10
44940	186-6089	5360-01-358-3755	12	9
44940	186-6090	5340-01-364-9959	12	8
44940	186-6092	2815-01-359-8471	12	14
44940	186-6094	- - -	11	6
44940	186-6095	5310-01-358-3905	11	5
44940	186-6098	2815-01-361-0770	11	9
44940	186-6099	- - -	12	20
44940	186-6101	- - -	12	19
44940	186-6102	- - -	12	17
44940	186-6103	2815-01-359-8473	12	22
44940	186-6104	5306-01-356-7107	11	7
44940	186-6105	5306-01-359-0122	12	5
44940	186-6106	5306-01-359-0121	12	3
44940	186-6107	5365-01-383-8708	11	8
44940	186-6108	5330-01-358-5436	12	18
44940	186-6109	5330-01-358-5556	12	18
44940	186-6110	5330-01-358-5437	12	18
44940	186-6114	5310-01-361-5470	12	4
44940	186-6115	- - -	12	2
44940	186-6116	- - -	11	3
44940	186-6117	5330-01-356-7138	11	4
44940	186-6118	5310-01-356-8341	11	1
44940	186-6119	- - -	9	8
44940	186-6119-01	- - -	9	12
44940	186-6119-02	- - -	9	14
44940	186-6119-03	- - -	9	10
			9	23
44940	186-6119-04	- - -	9	11
44940	186-6119-05	- - -	9	15
44940	186-6119-06	- - -	9	13
44940	186-6121	5360-01-360-1954	9	9
44940	186-6122	- - -	9	21
44940	186-6123	- - -	9	25
44940	186-6123-01	- - -	9	33
44940	186-6123-02	- - -	9	29
44940	186-6123-03	- - -	9	28
44940	186-6124	3120-01-359-7002	9	31
			9	47
44940	186-6125	5305-01-359-0185	9	32
44940	186-6126	5305-01-359-1329	9	34

SECTION IV

CROSS REFERENCE INDEXES
PART NUMBER INDEX

FSCM	PART NUMBER	STOCK NUMBER	FIG.	ITEM
44940	186-6127	5305-01-359-0188	9	35
44940	186-6129	5330-01-361-5288	9	30
			9	46
44940	186-6131	5310-01-361-5471	9	27
			9	40
44940	186-6132	- - -	9	37
44940	186-6132-01	- - -	9	45
44940	186-6132-02	- - -	9	43
44940	186-6132-03	- - -	9	42
44940	186-6135	- - -	6	8
44940	186-6136	5360-01-361-6954	9	38
44940	156-6137	5360-01-360-1956	9	41
44940	186-6138	5360-01-360-1952	9	1
44940	186-6140	5315-01-369-7214	9	50
44940	186-6140-1	- - -	9	3
44940	186-6141	5365-01-381-2361	9	4
44940	186-6142	5360-01-360-1953	9	2
44940	186-6143	5365-01-360-2911	9	5
			9	20
			14	9
44940	186-6146	- - -	13	3
44940	186-6147	5330-01-356-5438	13	4
44940	186-6148	5330-01-358-5554	13	7
44940	188-6149	- - -	13	8
44940	186-6150	5305-01-359-8791	13	1
44940	186-6151	2915-01-360-6943	4	3
44940	186-6152	2815-01-361-7737	4	7
44940	186-6153	5307-01-3594688	4	5
44940	186-6154	5310-01-358-5544	4	1
44940	186-6157	5365-01-360-2925	4	4
44940	186-6158	- - -	4	2
44940	166-6159	4710-01-360-6304	4	11
44940	186-6161	4730-01368-6994	4	10
44940	186-6162	5340-01-356-6147	4	8
44940	186-6163	5330-01-356-7173	4	9
44940	186-6164	4730-01-357-8705	5	8
44940	186-6165	5310-01-383-1585	5	9
44940	186-6166	- - -	5	7
44940	186-6168	2910-01-355-6028	5	12
44940	186-6169	- - -	5*	
44940	186-6170	- - -	5	1
44940	186-6171	- - -	5	2
44940	186-6172	- - -	5	11
44940	186-6173	5310-01-360-1982	5	13

ARMY TM 9-2815-252-24P
AIR FORCE TO 38G1-92-4

SECTION IV

CROSS REFERENCE INDEXES
PART NUMBER INDEX

FSCM	PART NUMBER	STOCK NUMBER	FIG.	ITEM
44940	186-6174	5306-01-356-7106	5	10
44940	186-6175	- - -	5	5
44940	186-6176	- - -	5	3
44940	186-6177	4730-01-357-8706	5	4
44940	186-6178	2930-01-359-4992	3	9
44940	186-6179	- - -	6	1
44940	186-6180	5330-01-360-4778	3	12
44940	186-6181	- - -	3	13
44940	186-6182	5330-01-356-5435	3	14
44940	186-6183	4730-01-385-1078	3	16
44940	186-6186	5305-01-359-8790	3	7
44940	186-8188	5307-01-359-7973	3	17
44940	186-6189	- - -	3	3
44940	186-6190	5330-01 -358-5560	3	4
44940	186-6193	6685-01-360-9653	3	5
44940	186-6194	5310-01-382-7683	3	18
44940	186-6195	- - -	13	6
44940	186-6196	5305-01-361-6562	13	5
44940	186-6198	5305-01-360-5280	16	1
44940	186-6199	- - -	1	4
44940	186-6202	5330-01-356-7136	1	5
44940	186-6203	5306-01-356-7106	1	2
44940	186-6204	- - -	2	2
44940	186-6206	5330-01-356-7137	2	3
44940	186-6208	5307-01-361-6998	2	4
44940	186-6209	5310-01-356-7108	2	1
			7	16
44940	186-6210	5330-01-360-5943	12	
44940	186-6212	5330-01-381-9950	17	
44940	186-6229	- - -	18	11
44940	186-6230	5305-01-359-1330	18	1
44940	186-6233	5310-01-361-5469	6	3
44940	186-6234	- - -	6	9
44940	186-6235	5310-01-356-7110	6	6
44940	186-6240	5310-01-356-7153	6	7
44940	186-6250	5307-01-378-7028	7	17
44940	186-6251	- - -	6	5
44940	186-6252	- - -	6	2
44940	186-6255	- - -	12	23
44940	186-6257	5330-01-361-5286	12	13
44940	186-6258-01	- - -	11*	
44940	186-6258-02	- - -	11*	
44940	186-6260	5305-01-370-0269	9	19
44940	186-6261	5340-01-361-7901	9	17

SECTION IV

CROSS REFERENCE INDEXES
PART NUMBER INDEX

FSCM	PART NUMBER	STOCK NUMBER	FIG.	ITEM
44940	186-6262	- - -	0005	0014
44940	186-6264	4520-01-359-8114	1	1
44940	186-6265	- - -	9	44
44940	186-6267	5315-01-360-1643	9	18
44940	186-6268	3120-01-358-7345	14	3
44940	186-6278-01	- - -	4	26
44940	186-6278-02	- - -	4	24
44940	186-6278-03	- - -	4	18
44940	186-6279-01	- - -	4	25
44940	186-6279-02	- - -	4	22
44940	186-6279-03	- - -	4	19
44940	186-6279-04	- - -	4	23
44940	186-6282	5340-01-383-9379	3	10
44940	186-6283	4730-01-385-5915	3	11
44940	186-6287	- - -	9	16
44941	186-6287-01	- - -	9	24
44940	186-6288	3120-01-383-9112	9	22
44940	186-6289	- - -	4	17
44940	186-6290	3040-01-378-8302	4	6
44940	186-6293-01	- - -	4	16
44940	186-6293-02	- - -	4	21
44940	186-6293-03	- - -	4	20
44940	191-1431	5306-01-212-3228	10	10
44940	191-1432	5340-01-215-2927	10	11
44940	191-1433	5360-01-227-3195	10	13
44940	191-1436	3110-01-236-6408	10*	
44940	191-1437	3110-01-218-0623	10*	
44940	191-1439	5340-01-223-8726	10	19
44940	191-1440	5360-01-227-6302	10	20
44940	191-1441	2520-01-223-8780	10	23
44940	191-1442	2920-0 1-224-6247	10	17
44940	191-1444	2920-01-224-6246	10	18
44940	191-1445	2920-01-228-3708	10	22
44940	191-1446	3020-01-225-6988	10	21
44940	191-1450	5305-01-212-3371	10	8
44940	191-1550	2920-01-219-8200	10	7
44940	191-1605	2920-01-223-8762	10	24
44940	191-1606	2920-01-212-4008	10	14
44940	191-1607	2920-01-214-6655	10	15
44940	191-1608	5977-01-224-2917	10	12
44940	191-1609	5945-01-213-9233	10	9
97947	201-13120	5330-01-085-3102	7	2
97947	201-30261	5325-01-336-5227	12	21
97947	201-81200	5330-01-087-7373	11	2

ARMY TM 9-2815-252-24P
AIR FORCE TO 38G1-924

SECTION IV

CROSS REFERENCE INDEXES
PART NUMBER INDEX

FSCM	PART NUMBER	STOCK NUMBER	FIG.	ITEM
44940	231-0307	-- -	16	2
97947	272-00003	5310-01-086-1527	3	8
			7	3
			12	1
97947	272-00039	5306-01-338-0211	17	2
97947	272-00047	5306-01-338-0214	3	6
97947	272-00256	5306-01-335-6157	7	12
97947	284359	2910-01-110-8184	4	15
97947	317-50033	5120-01-384-8762	19	3
97947	317-50106	5120-01-364-6759	19	1
97947	317-50108	5120-01-384-6757	19	2
97947	317-50111	5120-01-384-6764	19	6
97947	317-50114	5210-01-384-8834	19	4
97947	317-50115	5210-01-392-5746	19	5
97947	393331	2815-01-1394010	4	
30780	4-4F3BXSS	4730-01-303-0840	4	12
44940	505-0056	4730-01-633-7983	18	6
97947	601-20691	5330-01-207-7350	3	15
24439	816-01608	5310-01-018-5472	12	16
24439	61601608	5310-01-01-5472	18	2
97947	702201	5306-01-314-6734	9	26
44940	718-1019	5305-01-356-9469	6*	
70040	7961121	2-10-01-099-5467	4	
44940	800-0046	5305-01-0614892	4	27
44940	800-2010	5305-01-356-9468	6	4
44940	850-0050	5310-01-060-9104	4	28
44940	860-2008	5310-01-356-7109	10	3
15526	933-M6X12	5305-01-184-1937	14	11
15526	933-M6X8	5305-01-163-5075	14	4
15526	934-AdM5X.8	5310-01-333-8085	9	36
15526	934-SX-M5X0.8	5310-01-333-8085	9	6
52195	APG1	9150-00-402-2372	BULK	
98308	BRAYC0421C	9150-00-189-6727	BULK	
15434	C0191144300	2920-01-224-8389	10	16
44940	C0718100200	5305-01-357-0896	10	1
15434	C0720180600	5305-01-212-3227	10	5
15434	C0740101000	5310-01-276-8608	10	6
15434	C0800205200	5305-01-158-3207	12	15
15434	C0850200500	5310-01-321-3478	10	2
15434	C0850200800	5310-01-321-4088	10	4
			BULK	
81349	MIL-L-2104	9150-01-178-4726	BULK	
96906	MS3367-4-9	5975-00-727-5153	5	6
81348	WW-P-471AASBCC	4730-00-187-4202	13	9

SECTION IV

CROSS REFERENCE INDEXES
FIGURE AND ITEM NUMBER INDEX

FIG.	ITEM	STOCK NUMBER	FSCM	PART NUMBER
1	1	4520-01-359-6114	44940	186-6264
1	2	5306-01-356-7105	44940	186-6203
1	3	5310-01-383-2019	44940	186-6015
1	4	- - -	44940	186-6199
1	5	5330-01-3567136	44940	186-6202
2	1	5310-01-356-7108	44940	186-6209
2	2	- - -	44940	186-6204
2	3	5330-01-356-7137	44940	186-6206
2	4	5307-01-361-6998	44940	186-6208
3	1	5306-01-284-3794	56161	10526115
3	2	5310-01-085-1019	97947	027-00082
3	3	- - -	44940	186-6189
3	4	5330-01-358-5560	44940	186-6190
3	5	6685-01-360-9653	44340	186-6193
3	6	5306-01-338-0214	97947	272-00047
3	7	5305-01-359-6790	44940	186-6186
3	8	5310-01-086-1527	97947	272-00003
3	9	2930-01-3594992	44940	186-6178
3	10	5340-01-383-9379	44940	186-6282
3	11	4730-01-385-5915	44940	186-6283
3	12	5330-01-360-4778	44940	188-6180
3	13	- - -	44940	186-6181
3	14	5330-01-358-5435	44940	186-6182
3	15	5330-01-207-7350	97947	601-20691
3	16	4730-01-385-1078	44940	186-6183
3	17	5307-01-359-7973	44940	186-6188
3	18	5310-01-382-7683	44940	186-6194
4		2910-00-099-5467	70040	7961121
4		2815-01-139-4010	97947	393331
4	1	5310-01-358-15544	44940	1868154
4	2	- - -	44940	186-6158
4	3	2915-01-360-6943	44940	186-6151
4	4	5365-01-360-2925	44940	186-8157
4	5	5307-01-3594688	44940	186-6153
4	8	3040-01-378-8302	44940	186-6290
4	7	2815-01-361-7737	44940	186-6152
4	8	5340-01-356-6147	44940	186-6162
4	9	5330-01-356-7173	44940	186-6163
4	10	4730-01-358-6994	44940	186-6161
4	11	4710-01-360-6304	44940	186-6159
4	12	4730-01-303-0840	30780	4-4F3BXSS
4	13	5305-01-178-7349	56161	10503605
4	14	5310-01-158-3188	15526	127-B6
4	15	2910-01-110-8184	97947	264359

ARMY TM 9-2815-252-24P
AIR FORCE TO 38G1-92-4

SECTION IV

CROSS REFERENCE INDEXES
FIGURE AND ITEM NUMBER INDEX

FIG.	ITEM	STOCK NUMBER	FSCM	PART NUMBER
4	16	- - -	44940	186-6293-01
4	17	- - -	44940	186-6289
4	18	- - -	44940	186-6278-03
4	19	- - -	44940	186-6279-03
4	20	- - -	44940	186-6293-03
4	21	- - -	44940	186-6293-02
4	22	- - -	44940	186-6279-02
4	23	- - -	44940	186-6279-04
4	24	- - -	44940	186-6278-02
4	25	- - -	44940	186-6279-01
4	26	- - -	44940	186-6278-01
4	27	5305-01-061-4892	44940	800-0046
4	28	5310-01-060-9104	44940	850-0050
4	29	- - -	44940	1442379
5	1	- - -	44940	186-6170
5	2	- - -	44940	186-6171
5	3	- - -	44940	186-6176
5	4	4730-01-357-8706	44940	188-6177
5	5	- - -	44940	186-6175
5	6	5975-00-727-5153	96906	MS3367-4-9
5	7	- - -	44940	186-6166
5	8	4730-01-357-8705	44940	186-6164
5	9	5310-01-383-1585	44940	186-6165
5	10	5306-01-356-7106	44940	186-6174
5	11	- - -	44940	186-6172
5	12	291-10-01-355-6028	44940	186-6166
5	13	5310-01-360-1982	44940	186-6173
6	1	- - -	44940	166-6179
6	2	- - -	44940	186-6252
6	3	5310-01-361-5469	44940	186-6233
6	4	5305-01-356-9468	44940	800-2010
6	5	- - -	44940	186-6251
6	6	5310-01-356-7110	44940	186-6235
6	7	5310-01-356-7153	44940	186-6240
6	8		44940	186-6135
6	9	- - -	44940	186-4234
7	1	- - -	44940	186-6026
7	2	53301-01-085-3102	97947	201-13120
7	3	5310-01-086-1527	97947	272-00003
7	4	5310-01-383-1608	44940	186-6019
7	5	- - -	44940	186-6016
7	6	5330-01-358-5557	44940	186-6017
7	7	5307-01-359-0182	44940	186-6018
7	8	- - -	44940	186-6023

SECTION IV

CROSS REFERENCE INDEXES
FIGURE AND ITEM NUMBER INDEX

FIG.	ITEM	STOCK NUMBER	FSCM	PART NUMBER
7	9	5330-01-359-1499	44940	186-6024
7	10	2940-01-361-5161	44940	186-6025
7	11	4730-01-385-1094	44940	186-6021
7	12	5306-01-335-6157	97947	272-00256
7	13	5310-01-383-2019	44940	186-6015
7	14	- - -	44940	186-6009
7	15	5330-01-361-5290	44940	186-6010
7	16	5310-01-356-7108	44940	186-6209
7	17	5307-01-378-7028	44940	186-6250
8	1	- - -	44940	186-6032
8	2	5305-01-178-7349	56161	10503805
8	3	5310-01-383-2019	44940	186-6015
8	4	2815-01-359-4955	44940	186-6030
8	5	4820-01-361-6099	44940	186-6031
9	1	5360-01-360-1952	44940	186-6138
9	2	5360-01-360-1953	44940	186-6142
9	3	- - -	44940	186-6140-1
9	4	5365-01-381-2361	44940	186-6141
9	5	5365-01-360-2911	44940	186-6143
9	6	5310-01-333-8085	15526	934-SX-M5 X 0.8
9	7	5305-01-166-0616	56161	10504502
9	8	- - -	44940	186-6119
9	9	5360-01-360-1954	44940	186-6121
9	10	- - -	44940	186-6119-03
9	11	- - -	44940	186-6119-04
9	12	- - -	44940	186-611-01
9	13	- - -	44940	186-6119-06
9	14	- - -	44940	186-6119-02
9	15	- - -	44940	186-6119-05
9	16	- - -	44940	186-6287
9	17	5340-01-361-7901	44940	186-6261
9	18	5315-01-360-1643	44940	186-6267
9	19	5305-01-370-0269	44940	186-6260
9	20	5365-01-360-2911	44940	186-6143
9	21	- - -	44940	186-6122
9	22	3120-01-383-9112	44940	186-6288
9	23	- - -	44940	186-6119-03
9	24	- - -	44941	186-6287-01
9	25	- - -	44940	186-6123
9	26	5306-01-314-6734	97947	702201
9	27	5310-01-361-5471	44940	186-6131
9	28	- - -	44940	186-6123-03
9	29	- - -	44940	186-6123-02
9	30	5330-01-361-5288	44940	186-6129

ARMY TM 9-2815-252-24P
AIR FORCE TO 38G1-924

SECTION IV

CROSS REFERENCE INDEXES
FIGURE AND ITEM NUMBER INDEX

FIG.	ITEM	STOCK NUMBER	FSCM	PART NUMBER
9	31	3120-01-359-7002	44940	186-6124
9	32	5305-01-359-0185	44940	186-6125
9	33	- - -	44940	186-6123-01
9	34	5305-01-359-1329	44940	186-6126
9	35	5305-01-359-0188	44940	186-6127
9	36	5310-01-333-8085	15526	934-A4-M5X .8
9	37	- - -	44940	186-6132
9	38	5360-01-361-6954	44940	186-6136
9	39	5305-01-166-0616	56161	10504502
9	40	5310-01-361-5471	44940	186-6131
9	41	5360-01-360-1956	44940	186-6137
9	42	- - -	44940	186-6132-03
9	43	- - -	44940	186-6132-02
9	44	- - -	44940	186-6265
9	45	- - -	44940	186-6132-01
9	46	5330-01-361-5288	44940	186-6129
9	47	3120-01-359-7002	44940	186-6124
9		5315-01-369-7214	44940	186-6140
10	1	5305-01-357-0696	44940	C0718100200
10	2	5310-01-321-3478	15434	C0850200500
10	3	5310-01-356-7109	44940	860-2006
10	4	5310-01-3214068	15434	C0650200800
10	5	5305-01-212-3227	16434	C0720180600
10	6	5310-01-276-8608	16434	C0740101000
10	7	2920-01-219-8200	44940	191-1550
10	8	5305-01-212-3371	44940	191-1450
10	9	5045-01-213-9233	44940	191-1609
10	10	5306-01-212-3228	44940	191-1431
10	11	5340-01-215-2927	44940	191-1432
10	12	5977-01-224-2917	44940	191-1608
10	13	5360-01-227-3195	44940	191-1433
10	14	2920-01-212-4006	44940	191-1606
10	15	2920-01-214-6655	44940	191-1607
10	16	2920-01-224-8389	15434	C0191144300
10	17	2920-01-224-6247	44940	191-1442
10	18	2920-01-224-6246	44940	191-1444
10	19	5340-01-223-8726	44940	191-1439
10	20	5360-01-227-6302	44940	191-1440
10	21	3020-01-225-6988	44940	191-1446
10	22	2920-01-228-3708	44940	191-1445
10	23	2520-01-223-8780	44940	191-1441
10	24	2920-01-223-8762	44940	191-1605
11	1	5310-01-356-8341	44940	186-6118
11	2	5330-01-087-7373	97947	201-81200

SECTION IV

CROSS REFERENCE INDEXES
FIGURE AND ITEM NUMBER INDEX

FIG.	ITEM	STOCK NUMBER	FSCM	PART NUMBER
11	3	- - -	44940	186-6116
11	4	5330-01-356-7138	44940	186-6117
11	5	5310-01-358-3905	44940	186-6095
11	6	- - -	44940	186-6094
11	7	5306-01-356-7107	44940	186-6104
11	8	5365-01-363-8708	44940	186-6107
11	9	2815-01-361-0770	44940	186-6098
12		5330-01-360-5943	44940	186-6210
12	1	5310-01-086-1527	97947	272-00003
12	2	- - -	44940	186-6115
12	3	5306-01-359-0121	44940	186-6106
12	4	5310-01-361-5470	44940	186-6114
12	5	5306-01-359-0122	44940	186-6105
12	6	2815-01-355-7801	44940	186-6084
12	7	2815-01-101-2431	57386	04100253
12	8	5340-01-364-9959	44940	186-6090
12	9	5360-01-358-3755	44940	186-6089
12	10	5340-01-384-2996	44940	186-6088
12	11	2815-01-360-3221	44940	186-6087
12	12	2815-01-361-7711	44940	186-6086
12	13	5330-01-361-5286	44940	186-6257
12	14	2815-01-359-8471	44940	186-6092
12	15	5305-01-158-3207	15434	C0600205200
12	16	5310-01-018-5472	24439	616-01608
12	17	- - -	44940	186-6102
12	18	5330-01-358-5436	44940	186-6108
12	18	5330-01-358-5556	44940	186-6109
12	18	5330-01-358-5437	44940	186-6110
12	19	- - -	44940	186-6101
12	20	- - -	44940	186-6099
12	21	5325-01-336-5227	97947	201-30261
12	22	2815-01-359-6473	44940	186-6103
12	23	- - -	44940	186-6255
13	1	5305-01-359-6791	44940	186-6150
13	2	5310-01-383-2019	44940	186-6015
13	3	- - -	44940	186-6146
13	4	5330-01-358-5438	44940	186-6147
13	5	5305-01-361-6562	44940	186-6196
13	6	- - -	44940	186-6195
13	7	5330-01-358-5554	44940	186-6148
13	8	- - -	44940	186-6149
13	9	4730-00-187-4202	81348	WW-P-471AASBCC
14	1	5310-01-360-7885	44940	186-6045
14	2	3120-01-3594681	44940	186-6044

SECTION IV

CROSS REFERENCE INDEXES
FIGURE AND ITEM NUMBER INDEX

FIG.	ITEM	STOCK NUMBER	FSCM	PART NUMBER
14	3	3120-01-358-7345	44940	186-6268
14	4	5305-01-163-5075	15526	933-M6X8
14	5	5310-01-358-4726	44940	186-6038
14	8	5340-01-369-9467	44940	186-6042
14	7	5315-01-358-3737	44940	186-6040
14	8	3040-01-362-3508	44940	186-6039
14	9	5365-01-360-2911	44940	186-6143
14	10	2815-01-355-7677	44940	186-6035
14	11	5305-01-184-1937	15526	933-M6X12
15	1	2815-01-357-5448	44940	186-6078
15	2	5306-01-359-4621	44940	186-6079
15	3	3120-01-359-6762	44940	186-6080
15	4	- - -	44940	186-6078-01
15	5	2815-01-357-8803	44940	186-6067
15	5	- - -	44940	186-6071
15	5	- - -	44940	166-6068
15	5	- - -	44940	186-6069
15	5	- - -	44940	186-6070
15	6	- - -	44940	186-6067-02
15	6	5365-01-359-0172	44940	186-6072
15	8	- - -	44940	166-6068-01
15	8	- - -	44940	186-6069-01
15	8	- - -	44940	186-6070-01
15	8	- - -	44940	186-6071-01
15	8	- - -	44940	186-6067-01
15	9	- - -	44940	186-6077
15	9	2815-01-363-2256	44940	186-6073
15	9	- - -	44940	186-6074
15	9	- - -	4440	186-6075
15	9	- - -	44940	186-6076
16	1	5305-01-360-5280	44940	166-6198
16	2	- - -	44940	231-0307
17		5330-01-381-9950	44940	186-6212
17	1	5315-01-363-9717	44940	186-6057
17	2	5306-01-336-0211	97947	272-00039
17	3	- - -	44940	186-6058
17	4	5365-01-381-6431	44940	186-6065
17	4	5365-01-381-5165	44940	186-6066
17	5	5330-01-356-4739	44940	186-6063
17	6	3020-01-362-1817	44940	186-6054
17	7	5315-01-363-3444	44940	186-6055
17	8	2815-01-364-5771	44940	186-6046
17	9	- - -	44940	186-6061
17	9	3110-01-359-0114	44940	186-6060

SECTION IV

CROSS REFERENCE INDEXES
FIGURE AND ITEM NUMBER INDEX


FIG.	ITEM	STOCK NUMBER	FSCM	PART NUMBER
17	9	- - -	44940	186-4062
17	10	3120-01-396-8376	44940	186-6056
17	11	- - -	44940	186-6083
17	11	- - -	44940	186-6082
17	11	3110-01 -369-6672	44940	186-6081
17	12	- - -	44940	186-6048
17	13	5305-01-359-0189	44940	186-6050
17	14	- - -	44940	186-6048-01
17	15	- - -	44940	186-6048-02
17	16	5315-01-383-3448	44940	186-6049
17	17	- - -	44940	186-6052
17	17	- - -	44940	186-6053
17	17	5365-01-359-0205	44940	186-6051
17	18	- - -	44940	186-6046-01
18	1	5305-01-359-1330	44940	186-6230
18	2	5310-01-018-5472	24439	61601608
18	3	2815-01-355-7800	44940	186-6000
18	4	5340-01-374-2403	44940	186-6002
18	5	3120-01-358-9596	44940	186-6006
18	6	4730-00-633-7983	44940	505-4056
18	7	4730-00-187-4202	81346	WW-P471AASBCC
18	8	5315-01-370-5550	44940	186-6008
18	9	- - -	44940	186-6005
18	9	- - -	44940	186-6004
18	9	3120-01-361-8381	44940	186-6003
18	10	- - -	44940	186-6000-01
18	11	- - -	44940	186-6229
19	1	5120-01-384-6759	97947	317-50108
19	2	5120-01-384-6757	97947	317-50108
19	3	5120-01-384-6762	97947	317-50033
19	4	5210-01-384-8634	97947	317-50114
19	5	5210-01-392-5746	97947	317-50115
19	6	5120-01-384-6764	97947	317-50111

TM 9-2815-252-24P

T.O. 38G1-92-4

By Order of the Secretaries of the Army and Air Force:

Official:


JOEL B. HUDSON
*Administrative Assistant to the
Secretary of the Army*
02880

DENNIS J. REIMER
*General, United States Army
Chief of staff*

RONALD R. FOGELMAN
*General, USAF
Chief of Staff*

HENRY VICCELLIO, JR.
*General, USAF
Commander, Air Force Materiel Command*

DISTRIBUTION:

To be distributed in accordance with DA Form 12-25-E, block no. 5546, requirements for TM 9-2815-252-24P.

These are the instructions for sending an electronic 2028

The following format must be used if submitting an electronic 2028. The subject line must be exactly the same and all fields must be included; however only the following fields are mandatory: 1, 3,4,5,6,7,8, 9, 10, 13,15, 16,17, and27.

From: "Whomever" <whomever@avma27.army.mil>

To: mpmt%avma28@st-louis-emh7.army.mil

Subject: DA Form 2028

1. **From:** Joe Smith
2. Unit: home
3. **Address:**4300 Park
4. **City:** Hometown
5. **St:**MO
6. **Zip:** 77777
7. **Date Sent:** 19-OCT-93
8. **Pub no:** 55-2840-229-23
9. **Pub Title:** TM
10. **Publication Date:** 04-JUL-85
11. Change Number: 7
12. Submitter Rank: MSG
13. **Submitter FName:** Joe
14. Submitter MName: T
15. **Submitter LName:** Smith
16. **Submitter Phone:** 123-123-1234
17. **Problem:** 1
18. Page: 2
19. Paragraph: 3
20. Line: 4
21. NSN: 5
22. Reference: 6
23. Figure: 7
24. Table: 8
25. Item: 9
26. Total: 123
27. **Text:**
This is the text for the problem below line 27.



SOMETHING WRONG WITH THIS PUBLICATION?

THEN . . . JOT DOWN THE DOPE ABOUT IT ON THIS FORM, CAREFULLY TEAR IT OUT, FOLD IT AND DROP IT IN THE MAIL!

FROM: (PRINT YOUR UNIT'S COMPLETE ADDRESS)

PFC John DOE
CO 4 3rd Engineer Bn
Ft. Leonardwood, MO 63108

DATE SENT 22 August 1992

PUBLICATION NUMBER
TM 1-1520-250-10

PUBLICATION DATE
15 June 1992

PUBLICATION TITLE
Operator's manual MH60K Helicopter

BE EXACT PIN-POINT WHERE IT IS

PAGE NO	PARA-GRAPH	FIGURE NO	TABLE NO
6	2-1 a		
B1		4-3	

IN THIS SPACE, TELL WHAT IS WRONG AND WHAT SHOULD BE DONE ABOUT IT:

In line 6 of paragraph 2-1a the manual states the engine has 6 cylinders. The engine on my set only has 4 cylinders. Change the manual to show 4 cylinders.

Callout 16 in figure 4-3 is pointed at a bolt. In key to figure 4-3, item 16 is called a shim. Please correct one or the other.

PRINTED NAME, GRADE OR TITLE, AND TELEPHONE NUMBER

JOHN DOE, PFC (268) 317-7111

SIGN HERE

JOHN DOE *John Doe*

DA FORM 2028-2
1 JUL 79

PREVIOUS EDITIONS ARE OBSOLETE.
DRSTS-M verprint2, 1 Nov 80

P.S. - IF YOUR OUTFIT WANTS TO KNOW ABOUT YOUR RECOMMENDATION, MAKE A CARBON COPY OF THIS AND GIVE TO YOUR HEADQUARTERS.

1 Nov 80

FILL IN YOUR
UNITS ADDRESS



FOLD BACK

DEPARTMENT OF THE ARMY

OFFICIAL BUSINESS

COMMANDER
U.S. ARMY AVIATION AND TROOP COMMAND
ATTN: AMSAT-I-MP
4300 GOODFELLOW BOULEVARD
ST. LOUIS, MO 63120-1798

TEAR ALONG PERFORATED LINE

SOMETHING WRONG WITH THIS PUBLICATION?

DATE SENT

PUBLICATION TITLE
DIESEL ENGINE

IN THIS SPACE, TELL WHAT IS WRONG AND WHAT SHOULD BE DONE ABOUT IT:

**TABLE
NO**

SIGN HERE

P.S. - IF YOUR OUTFIT WANTS TO KNOW ABOUT YOUR RECOMMENDATION, MAKE A CARBON COPY OF THIS AND GIVE TO YOUR HEADQUARTERS.

1 Nov 80

FILL IN YOUR
UNITS ADDRESS



FOLD BACK

DEPARTMENT OF THE ARMY

OFFICIAL BUSINESS

COMMANDER
U.S. ARMY AVIATION AND TROOP COMMAND
ATTN: AMSAT-I-MP
4300 GOODFELLOW BOULEVARD
ST. LOUIS, MO 63120-1798

TEAR ALONG PERFORATED LINE



SOMETHING WRONG WITH THIS PUBLICATION?

THEN . . . JOT DOWN THE DOPE ABOUT IT ON THIS FORM, CAREFULLY TEAR IT OUT, FOLD IT AND DROP IT IN THE MAIL!

FROM: (PRINT YOUR UNIT'S COMPLETE ADDRESS)

DATE SENT

PUBLICATION NUMBER
TM9-2815-252-24P

PUBLICATION DATE
30 OCTOBER 1996

PUBLICATION TITLE
DIESEL ENGINE

BE EXACT PIN-POINT WHERE IT IS

IN THIS SPACE, TELL WHAT IS WRONG
AND WHAT SHOULD BE DONE ABOUT IT:

PAGE
NO

PARA-
GRAPH

FIGURE
NO

TABLE
NO

PRINTED NAME, GRADE OR TITLE, AND TELEPHONE NUMBER

SIGN HERE

DA FORM 2028-2
1 JUL 79

PREVIOUS EDITIONS
ARE OBSOLETE.
DRSTS-M verprint2, 1 Nov 80

P.S. - IF YOUR OUTFIT WANTS TO KNOW ABOUT YOUR
RECOMMENDATION, MAKE A CARBON COPY OF THIS
AND GIVE TO YOUR HEADQUARTERS.

1 Nov 80

FILL IN YOUR
UNITS ADDRESS



FOLD BACK

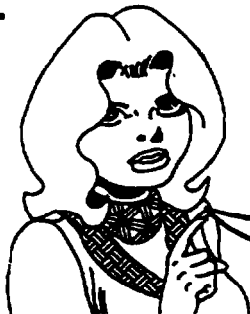
DEPARTMENT OF THE ARMY

OFFICIAL BUSINESS

COMMANDER
U.S. ARMY AVIATION AND TROOP COMMAND
ATTN: AMSAT-I-MP
4300 GOODFELLOW BOULEVARD
ST. LOUIS, MO 63120-1798

TEAR ALONG PERFORATED LINE

RECOMMENDED CHANGES TO EQUIPMENT TECHNICAL PUBLICATIONS



THEN . . JOT DOWN THE
DOPE ABOUT IT ON THIS
FORM, CAREFULLY TEAR
IT OUT, FOLD IT AND
DROP IT IN THE MAIL!

SOMETHING WRONG WITH THIS PUBLICATION?

FROM: (PRINT YOUR UNIT'S COMPLETE ADDRESS)

DATE SENT _____

PUBLICATION NUMBER

TM9-2815-252-24P

PUBLICATION DATE

30 OCTOBER 1996

PUBLICATION TITLE

DIESEL ENGINE

BE EXACT PIN-POINT WHERE IT IS

IN THIS SPACE, TELL WHAT IS WRONG AND WHAT SHOULD BE DONE ABOUT IT:

PAGE
NO

**PARA-
GRAPH**

FIGURE
NO

TABLE
NO

PRINTED NAME, GRADE OR TITLE, AND TELEPHONE NUMBER

SIGN HERE

DA FORM 1 JUL 79 2028-2

PREVIOUS EDITIONS
ARE OBSOLETE.

DRSTS-M verprint2, 1 Nov 80

P.S. - IF YOUR OUTFIT WANTS TO KNOW ABOUT YOUR RECOMMENDATION, MAKE A CARBON COPY OF THIS AND GIVE TO YOUR HEADQUARTERS.

1 Nov 80

FILL IN YOUR
UNITS ADDRESS



FOLD BACK

DEPARTMENT OF THE ARMY

OFFICIAL BUSINESS

COMMANDER
U.S. ARMY AVIATION AND TROOP COMMAND
ATTN: AMSAT-I-MP
4300 GOODFELLOW BOULEVARD
ST. LOUIS, MO 63120-1798

TEAR ALONG PERFORATED LINE

The Metric System and Equivalents

Linear Measure

1 centimeter = 10 millimeters = .39 inch
 1 decimeter = 10 centimeters = 3.94 inches
 1 meter = 10 decimeters = 39.37 inches
 1 dekameter = 10 meters = 32.8 feet
 1 hectometer = 10 dekameters = 328.08 feet
 1 kilometer = 10 hectometers = 3280.8 feet

Weights

1 centigram = 10 milligrams = .15 grain
 1 decigram = 10 centigrams = 1.54 grains
 1 gram = 10 decigrams = .035 ounces
 1 dekagram = 10 grams = .35 ounce
 1 hectogram = 10 dekagrams = 3.52 ounces
 1 kilogram = 10 hectograms = 2.2 Pounds
 1 quintal = 100 kilograms = 220.46 pounds
 1 metric = 10 quintals = 1.1 short tons

Liquid Measure

1 centiliter = 10 milliliters = .34 fl. ounce
 1 deciliter = 10 centiliters = 3.38 fl. ounces
 1 liter = 10 deciliters = 33.81 fl. ounces
 1 dekaliter = 10 liters = 2.64 gallons
 1 hectoliter = 10 dekaliters = 26.42 gallons
 1 kiloliter = 10 hectoliters = 264.18 gallons

Square Measure

1 sq. centimeter = 10 sq. millimeters = .155 sq. inch
 1 sq. decimeter = 10 sq. centimeters = 155 sq. inches
 1 sq. meter (centare) = 100 sq. decimeters = 10.76 sq. feet
 1 sq. dekameter (are) = 100 sq. meters = 1.0764 sq. feet
 1 sq. hectometer (hectare) = 100 sq. dekameters = 2.47 acres
 1 sq. kilometer = 100 sq. hectometers = .386 sq. mile

Cubic Measure

1 cu. centimeter = 1000 cu. millimeters = .06 cu. inches
 1 cu. decimeter = 1000 cu. centimeters = 61.02 cu. inches
 1 cu. meter = 1000 cu. decimeters = 35.31 feet

Approximate Conversion Factors

<i>To change</i>	To	<i>Multiply</i>	<i>To change</i>	To	<i>Multiply by</i>
inches	centimeter	2.540	ounce-inches	newton-meters	.007062
feet	meter	.305	centimeter	inches	.394
yards	meters	.914	meter	feet	3.280
miles	kilometer	1.609	meters	yards	1.094
square inches	square centimeters	6.451	kilometers	miles	.621
square feet	square meter	.093	square centimeters	square inches	.155
square yards	square meters	.836	square meters	square feet	10.764
square miles	square kilometers	2.590	square meters	square yards	1.196
acres	square hectometers	.405	square kilometers	square miles	.386
cubic feet	cubic meter	.028	square hectometers	acres	2.471
cubic yards	cubic meters	.765	cubic meters	cubic feet	35.315
fluid ounces	milliliters	29.573	cubic meters	cubic yards	1.308
pints	liters	.473	milliliters	fluid ounces	.034
quarts	liters	.946	liters	pints	2.113
gallons	liters	3.785	liters	quarts	1.057
ounces	grams	28.349	liters	gallons	.264
pounds	kilograms	.454	grams	ounces	.035
short tons	metric tons	307	kilograms	pounds	2.205
pound feet	newton-meters	1.356	metric tons	short tons	1.102
pound-inches	newton-meters	.11296			

Temperature (Exact)

°F	Fahreheit temperature	5/9 (after subtracting 32))	Celsius temperature	°C
----	--------------------------	--------------------------------	------------------------	----

